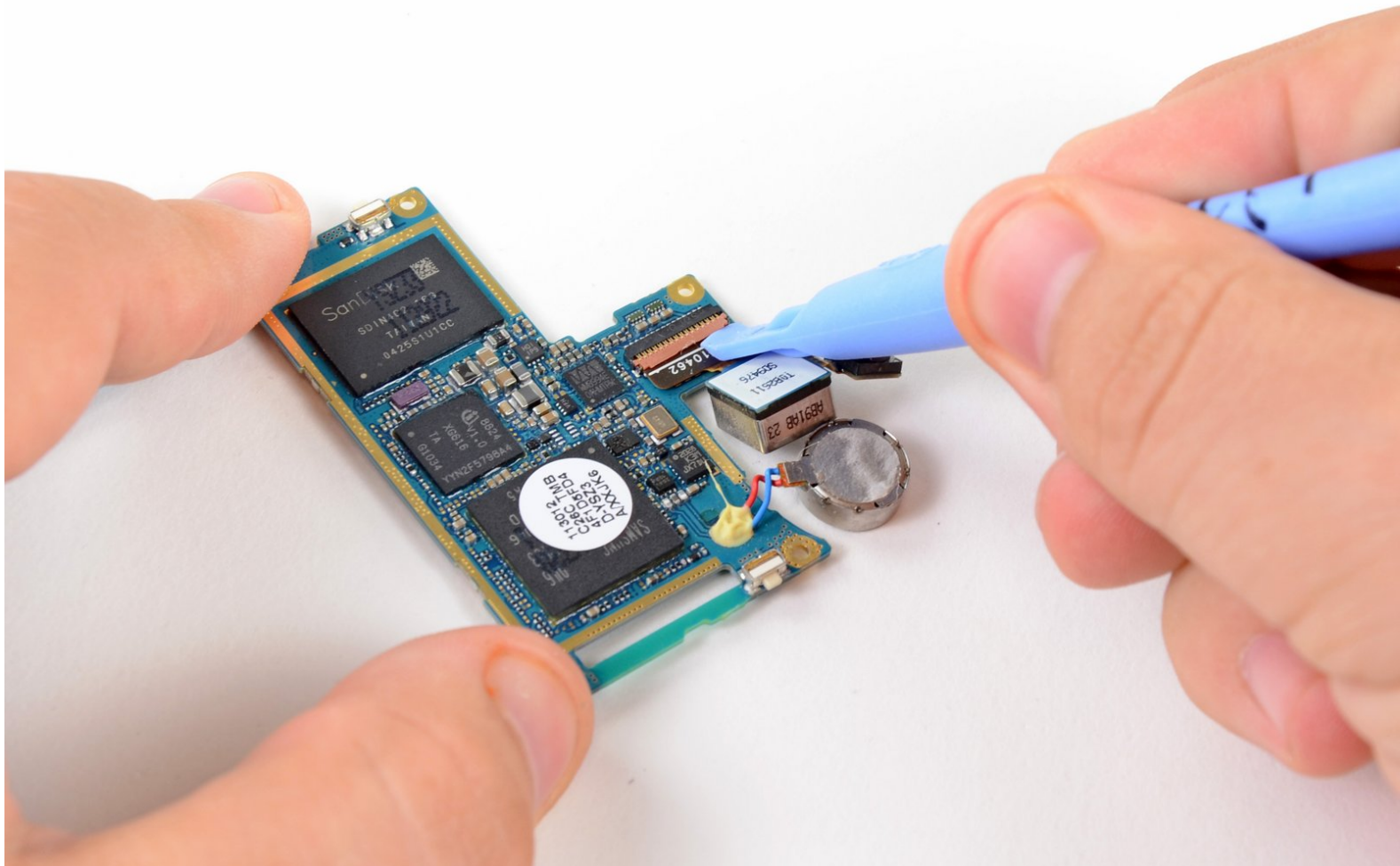




# Nexus S Rear Camera Replacement

Replace the rear facing camera in your Nexus S.

Written By: Walter Galan



---

# INTRODUCTION

This guide will help you replace the rear facing camera.



## TOOLS:

- [Tweezers](#) (1)
  - [Phillips #00 Screwdriver](#) (1)
  - [iFixit Opening Tools](#) (1)
-

## Step 1 — Rear Panel



- Gently insert a plastic opening tool between the rear panel and the inner rear frame near the rear-facing camera.
- Use your plastic opening tool to pry up the rear case around the perimeter of the Nexus S.

## Step 2



- Remove the rear panel from the Nexus S.

### Step 3 — Battery



- Using the edge of a plastic opening tool, lift the battery from the end closest to the headphone jack.
- Remove the battery from the Nexus S.

### Step 4 — SIM Card



- Use your thumb to slide the SIM card downwards from the SIM card slot.
- Remove the SIM card.

## Step 5 — Rear Inner Frame



- Remove the six Phillips screws securing the rear inner frame to the inner case.

## Step 6



- Insert the flat edge of a plastic opening tool in between the rear inner frame and the top left corner of the Nexus S.
- Pry the opening tool upwards to pop the top right corner from the clips securing it to the inner assembly.



## Step 7



- Insert the plastic opening tool to the right of the power button.
- Slide the plastic opening tool downwards along the perimeter of the Nexus S to release the clips on the right side.

## Step 8



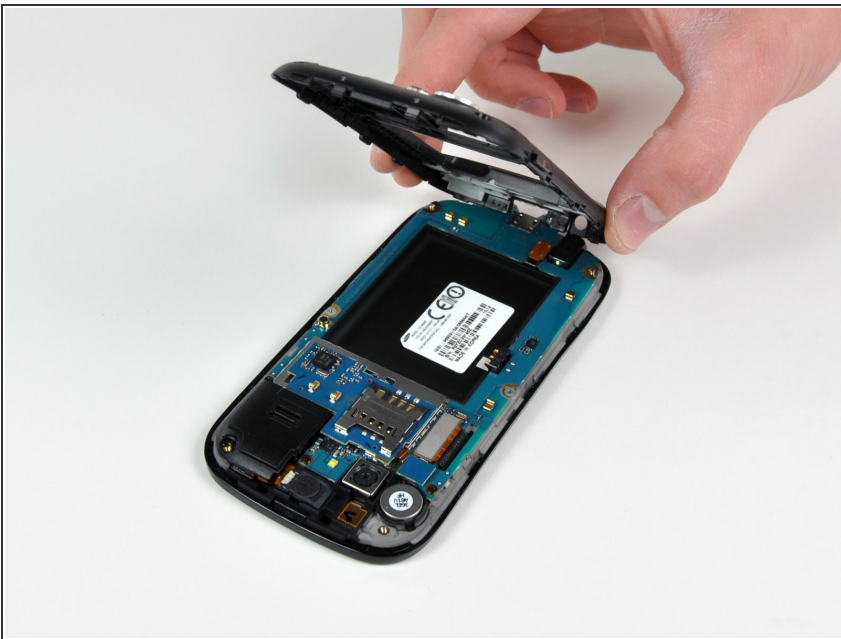
- In the same manner as previously described, release the bottom clips located near the bottom of the Nexus S.

## Step 9



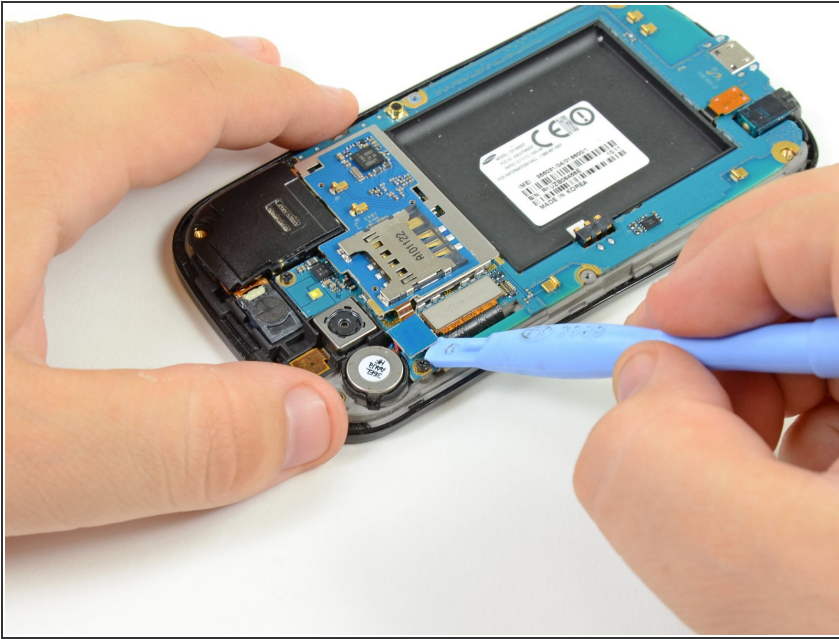
- Insert and pry the plastic opening tool to release the final clip securing the rear inner frame to the inner assembly.

## Step 10



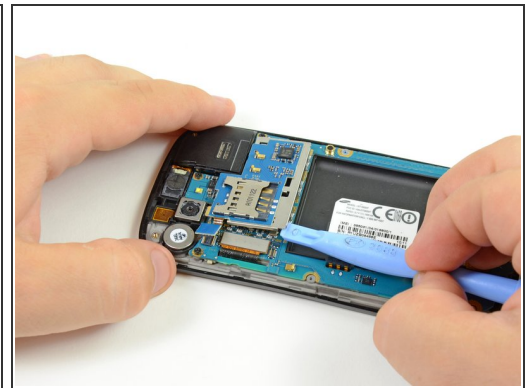
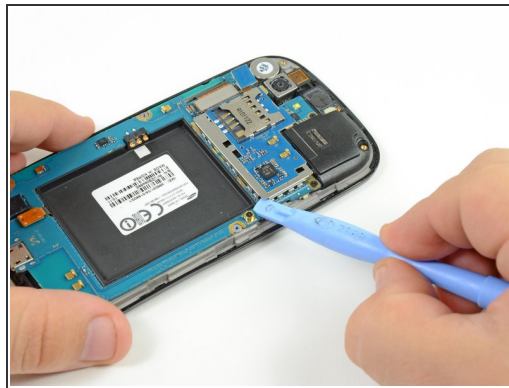
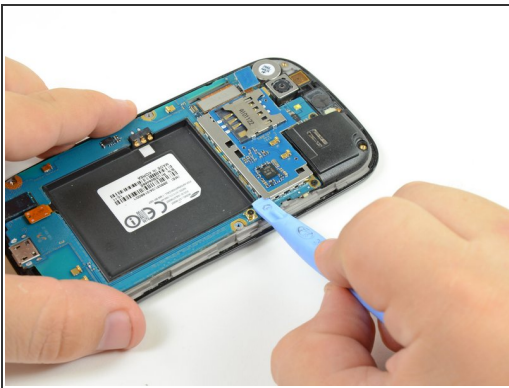
- Lift and remove the rear inner frame from the Nexus S.

## Step 11 — SIM Card Board



- Use the flat edge of a plastic opening tool to pry the SIM Board connector off its socket on the motherboard.

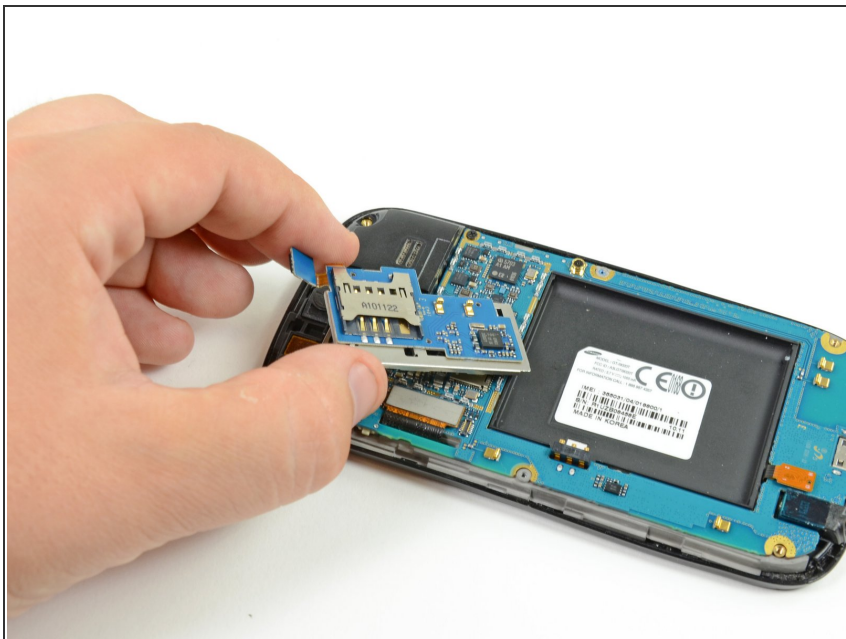
## Step 12



- Wedge the edge of a plastic opening tool underneath the SIM Card board and motherboard.
- Pry the clips located near the right bottom edge of the SIM Card board up off the motherboard.
- Repeat the process all along the bottom perimeter of the SIM Card board until all clips have been disengaged.



## Step 13



- Lift and remove the SIM Card board out of the Nexus S.

## Step 14 — Motherboard



- Insert the flat edge of a plastic opening tool underneath the headphone jack connector and pry upwards.

## Step 15



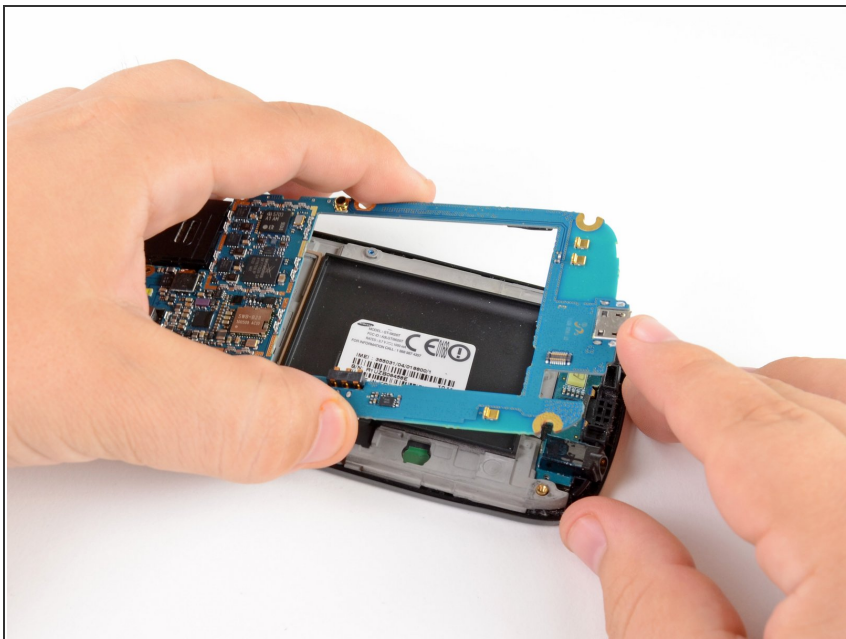
- Repeat the same procedure as the previous step to disconnect the digitizer connector.

## Step 16



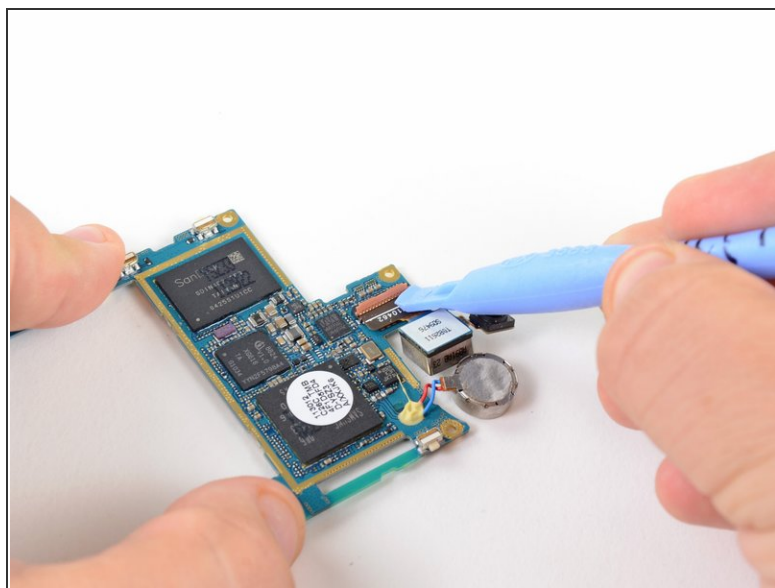
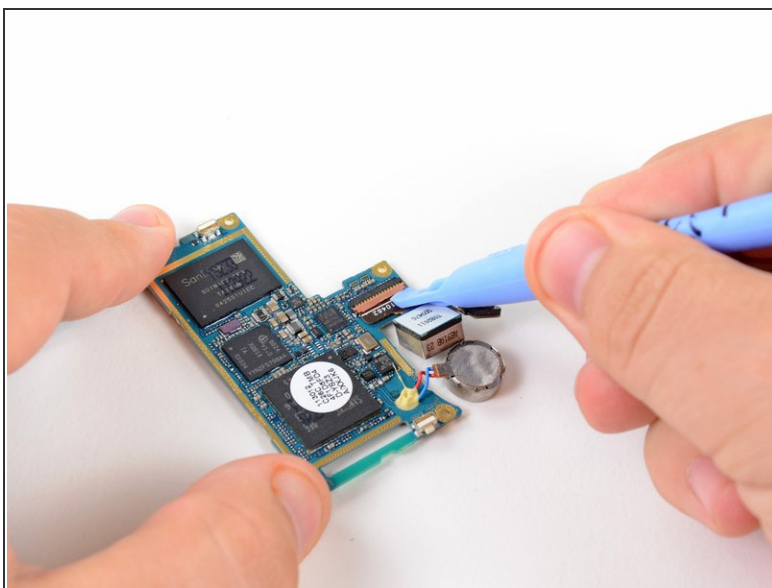
- Use a plastic opening tool to pry the speaker connector (highlighted in red) from its socket on the motherboard.
- Remove the three Phillips screws securing the motherboard to the inner assembly.

## Step 17



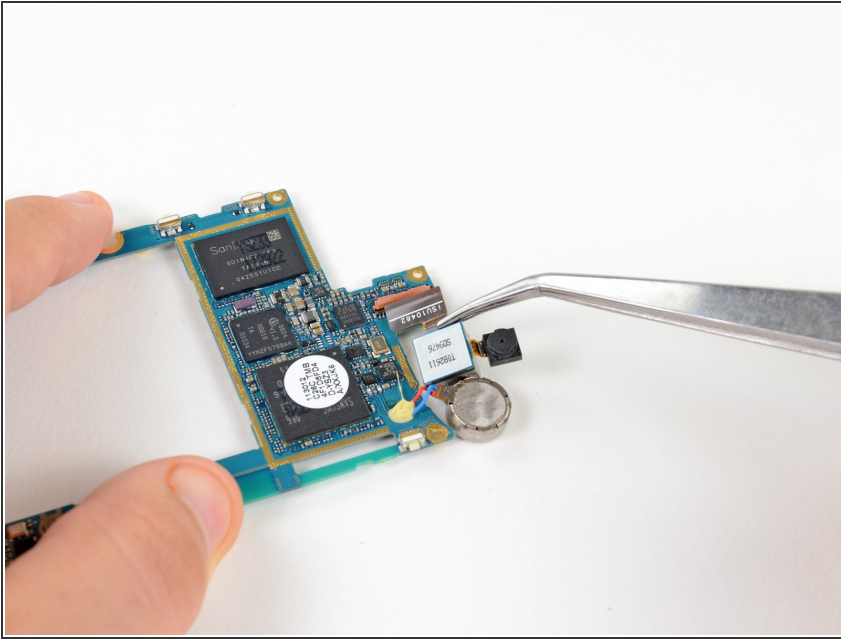
- Lift and remove the motherboard from the Nexus S, minding any cables that may get caught.

## Step 18 — Rear Camera



- Use the edge of plastic opening tool to flip up the rear facing camera ZIF connector.

## Step 19



- Use a pair of tweezers to lift and remove the rear camera from the motherboard.

To reassemble your device, follow these instructions in reverse order.