



Olympus SZ-12 Lens Replacement

How to replace the lens on the Olympus SZ-12

Written By: Samuel Hays



INTRODUCTION

You will need a clean, well-lit area, an iFixit repair kit including the specialized screw driver, along with the Phillips #000 bit. We also recommend you have an organization tray in order to keep track of all the screws you will be taking out.

TOOLS:

- [iFixit Opening Tools](#) (1)
 - [Phillips #000 Screwdriver](#) (1)
-

Step 1 — Back Case



- Remove nine 4.45mm Phillips #000 screws from the outside of the case.

Step 2



- There are four screws to take out on the bottom of the camera.

Step 3



- There are three screws to take out on this side.

Step 4



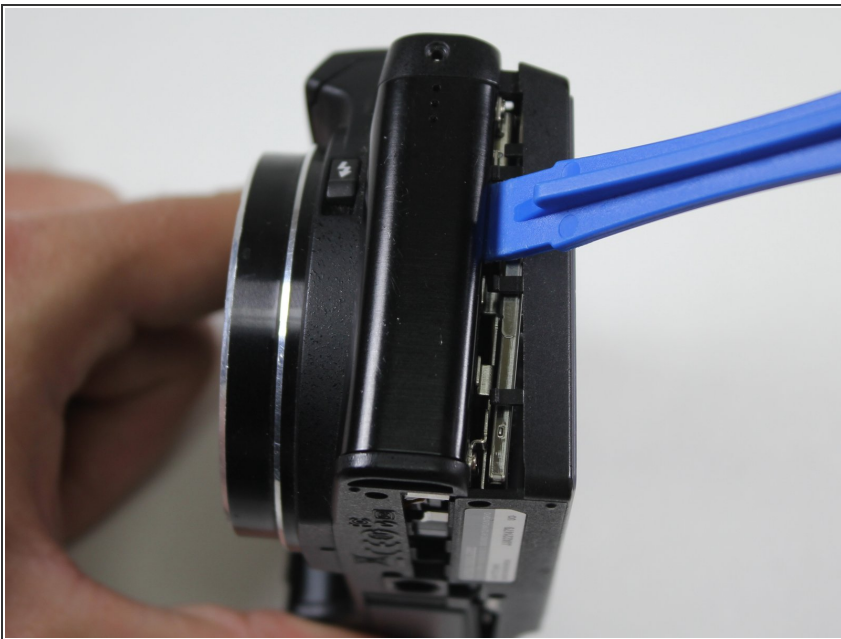
- There is one screw to take out on this side.

Step 5



- There is one hidden screw inside the HDMI port.

Step 6



- Using the blue plastic opening tool, wedge open and remove the case.

Step 7 — LCD Screen



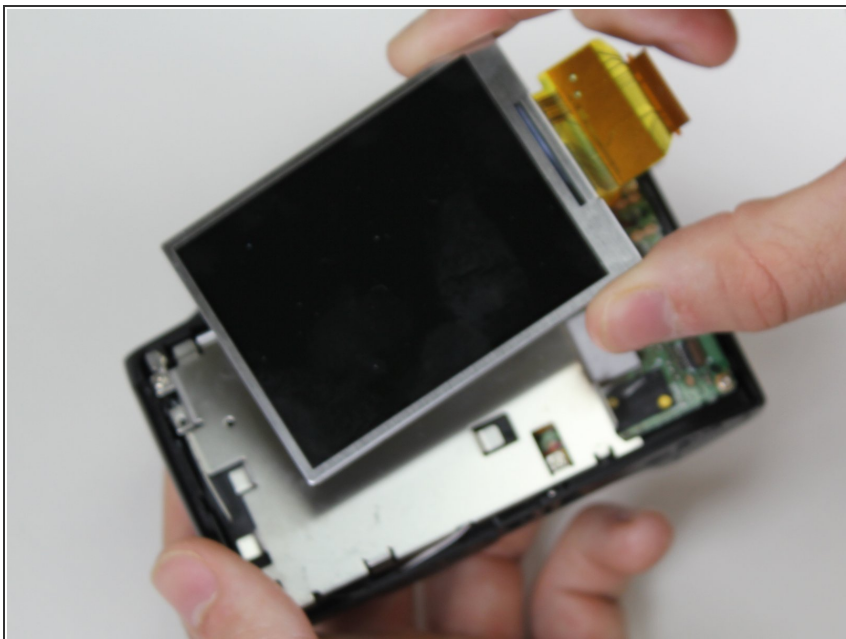
- Once you have the back case off, remove the LCD Screen.

Step 8



- Using a plastic opening tool, gently lift the retaining flap on the display cable ZIF connector.
- Pull the display cable from its socket on the motherboard.

Step 9



- Remove the LCD screen from the device.
- ⚠ Be careful not to rip the display's ribbon cable as you pull the screen away from the device.

Step 10 — Lens



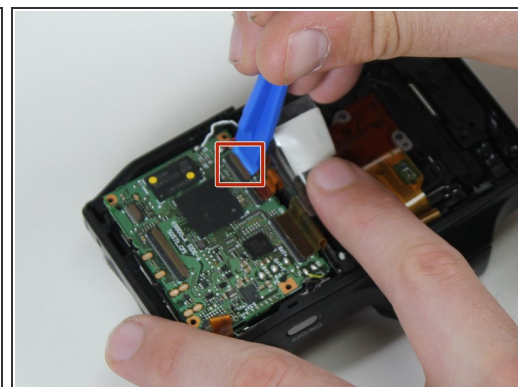
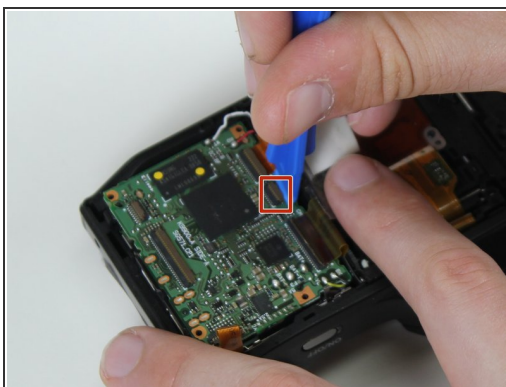
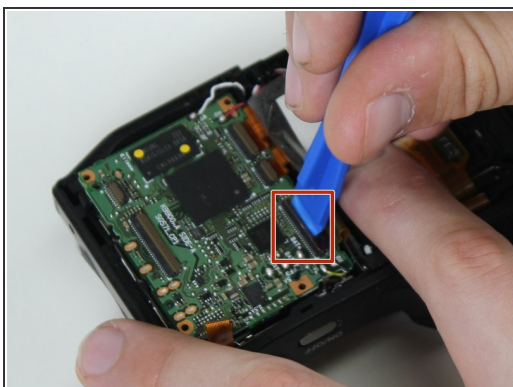
- Remove the four 3.8mm Phillips #000 screws from the LCD frame.

Step 11



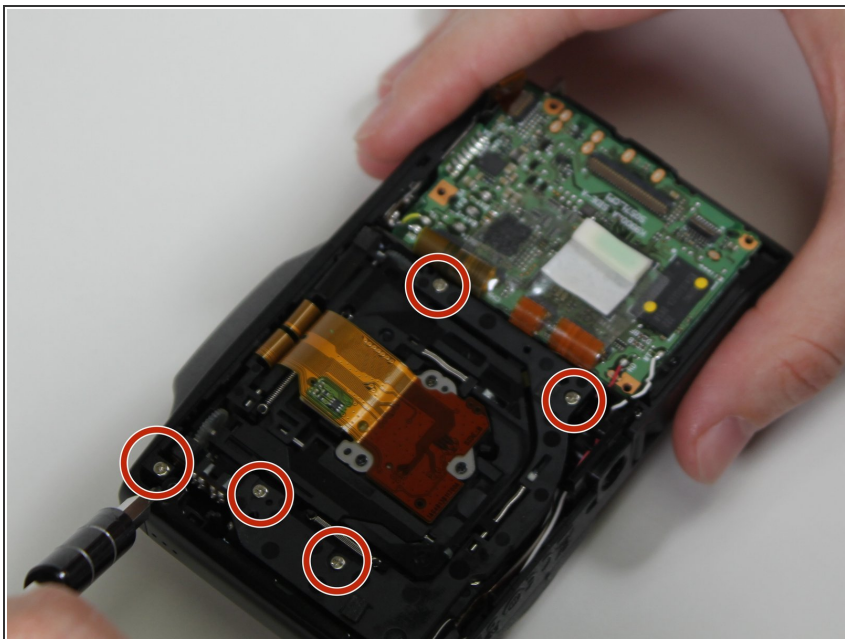
- Remove the top left screw, top right screw, bottom left screw, and bottom right screw from LCD frame.

Step 12



- Lift the retaining flaps on the three remaining ZIF connectors connected to the motherboard.

Step 13



- Remove the five 4.3mm Phillips #000 screws from the lens frame to access the lens.
- Remove the lens frame.

Step 14



- Remove two 4.3mm Phillips #000 screws from black plastic piece surrounding the lens.
- Remove the lens.

To reassemble your device, follow these instructions in reverse order.