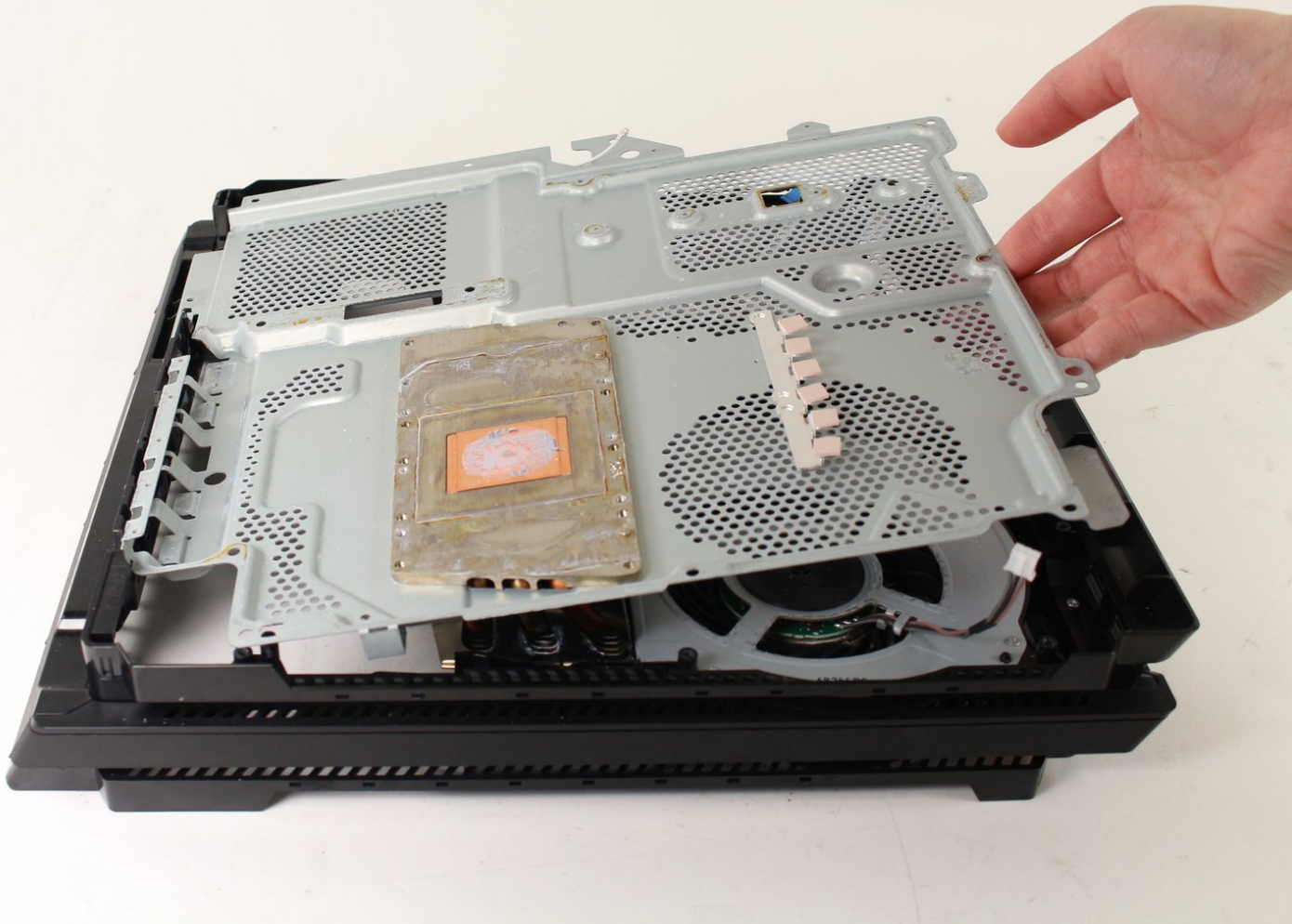




PlayStation 4 Pro Heat Pipe Replacement

This guide will show the steps necessary to...

Written By: Thomas



INTRODUCTION

This guide will show the steps necessary to replace the heat pipe in the PS4 Pro. This process involves warranty-voiding disassembly and many steps. The heat pipe is located halfway between the top and bottom of the PS4 Pro, and thus requires components from both sides to be removed in order to replace.



TOOLS:

- [T8 Torx Security Bit Screwdriver](#) (1)
- [Phillips #1 Screwdriver](#) (1)
- [Phillips #0 Screwdriver](#) (1)
- [iFixit Opening Tool](#) (1)



PARTS:

- [PlayStation 4 Pro Heat Sink and Chassis Plates](#) (1)

Step 1 — Hard Drive Caddy



- Flip the console upside down.
- Use your finger to pull and snap off the plastic cover over the hard drive.

Step 2



- Use a Phillips #1 Screwdriver to remove the single screw securing the hard drive caddy.
- Pull the hard drive caddy straight out.

Step 3 — Power Supply Assembly



- Flip the console right side up.
- Grip the two corners located at the front of the device.
- Pull upwards until a loud click is heard.
- ⓘ This may require a lot of force, so do not be afraid to get a little rough with your console.
- After both corners detach, slide the cover backwards and lift off.

Step 4



- Use a T8 Torx Security screwdriver to remove five screws from the rear of the device.
 - Two 31mm screws.
 - Three 10mm screws for the 7000 models; Two gray 10mm screws (upper and lower screws on the illustration) if the PS4 Pro is a 7100-series model.
- Remove the metal plate by pulling it up.

Step 5



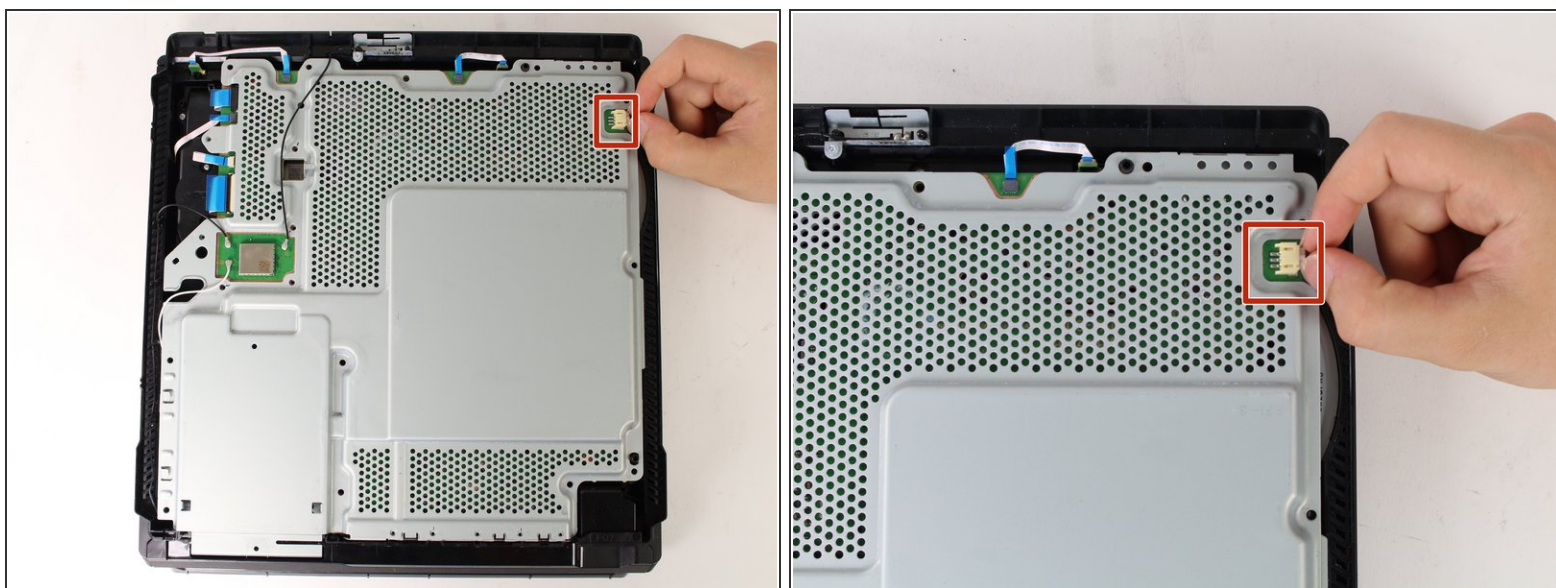
- Flip the console over so the bottom is facing up.
- Use a T8 Torx Security screwdriver to remove the three black 7mm screws in the back panel. (7000-series models only); or **one** 7mm screw (the middle one) with *7100-series* models **and** the warranty sticker to the left.
- Remove the bottom cover in the same way as the top cover. Grip the cover on both sides and pull up until it clicks. Then slide the cover off; ***With 7100-series models***, pay attention to the two clips that replace the corresponding screws.

Step 6



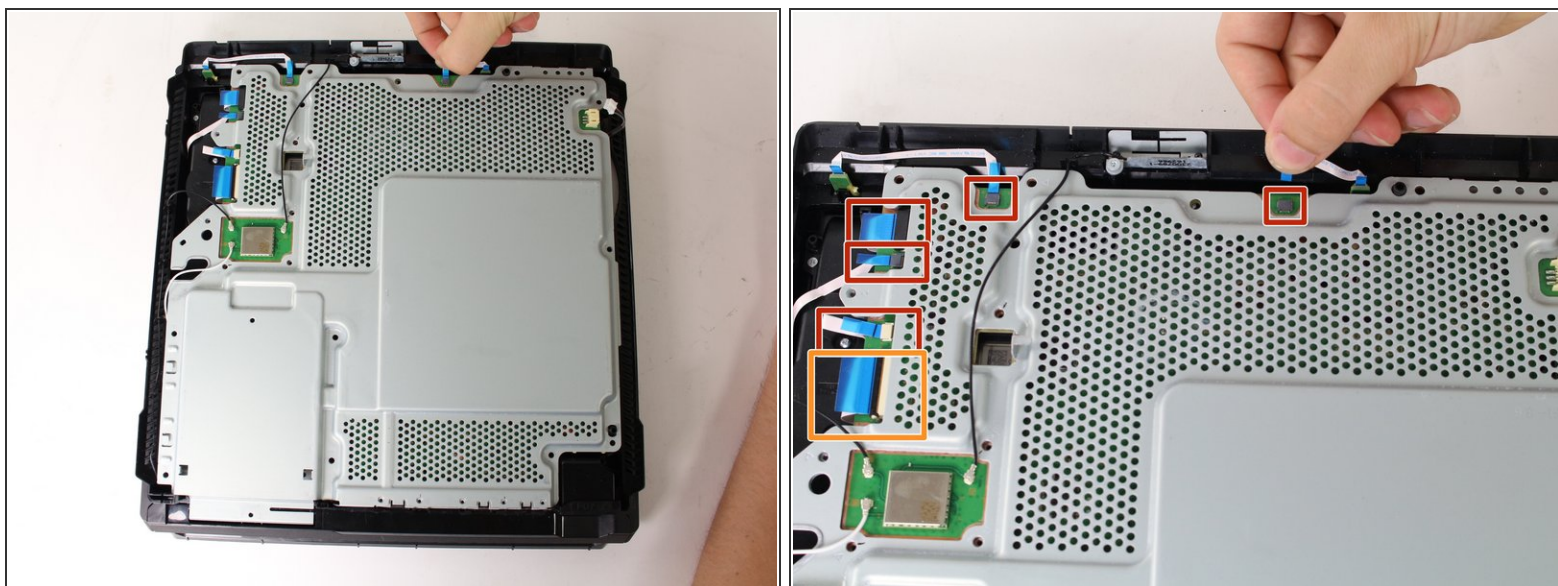
- Use a T8 Torx security screwdriver to remove the eleven 10mm silver screws from the metal plate.
- Use a Phillips #1 screwdriver to remove the eleven 4mm black screws from the metal plate.
- ⓘ **7200-series models** have 13 additional 4mm screws around the top and right of the metal plate. These screws are indicated with a triangle. *This may apply to other models.*
- Use a spudger to disconnect the three antenna cables (two black and one white) by prying them straight up from their sockets.

Step 7



- Pull the white fan connector straight out of the yellow mount on the motherboard.

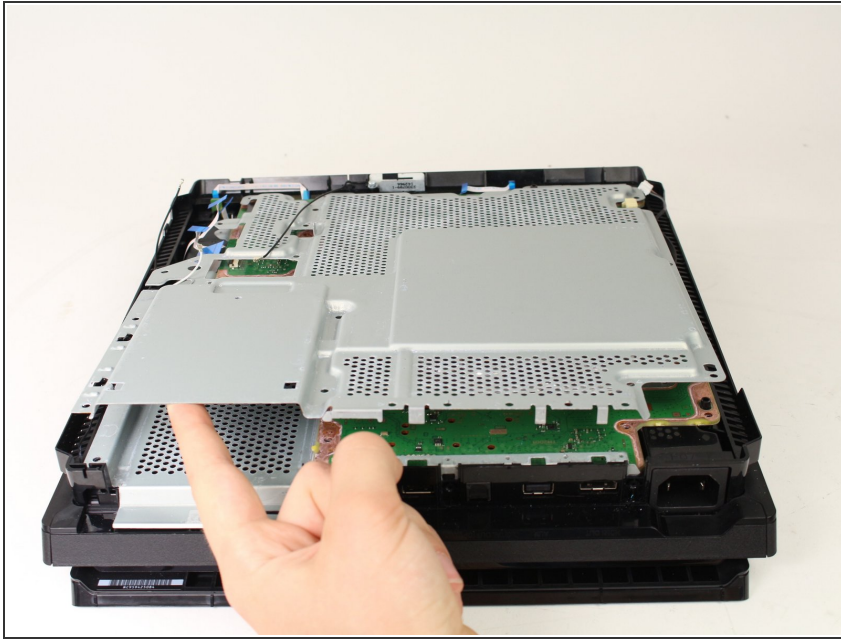
Step 8



- Pull out the five small, blue low profile cables connected to the metal plate.
- Lift the retaining flap on the ZIF connector of the large ribbon cable.
- Pull the large ribbon cable from its socket.

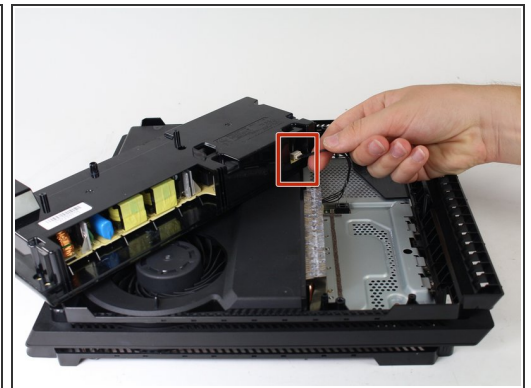
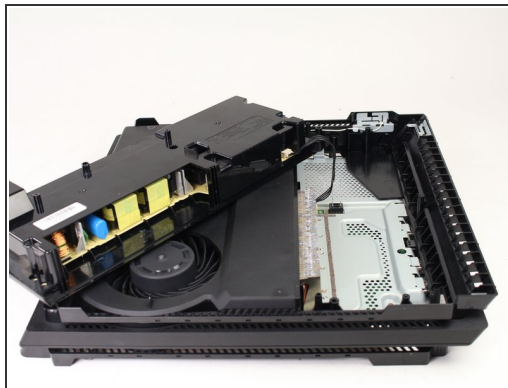
⚠ Do not pull on the biggest blue cable without lifting the tab first. Doing so can damage the connection.

Step 9



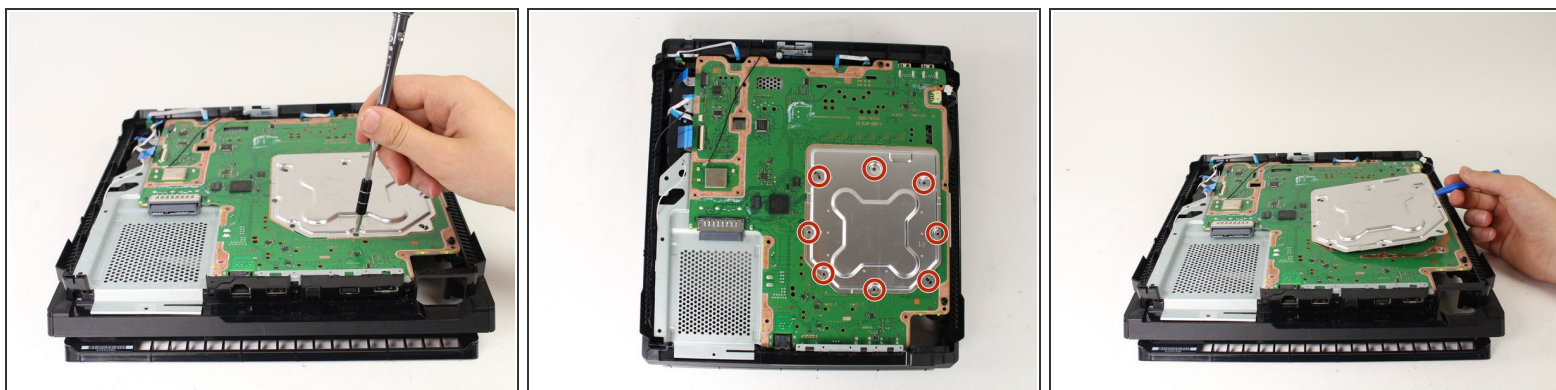
- Pull up and remove the metal plate.

Step 10



- Flip the console over to continue working on the top side.
- Pull up on the power supply unit and set it on the console.
- ⚠ Be careful not to pull too far, the assembly is still connected at one point.
- Grip the connector behind the power supply and pull straight out.

Step 11 — Motherboard



i If you are working on the **7200-series model**, this metal plate will have been already removed as part of the removing the larger motherboard plate. You may skip this step if this is the case.

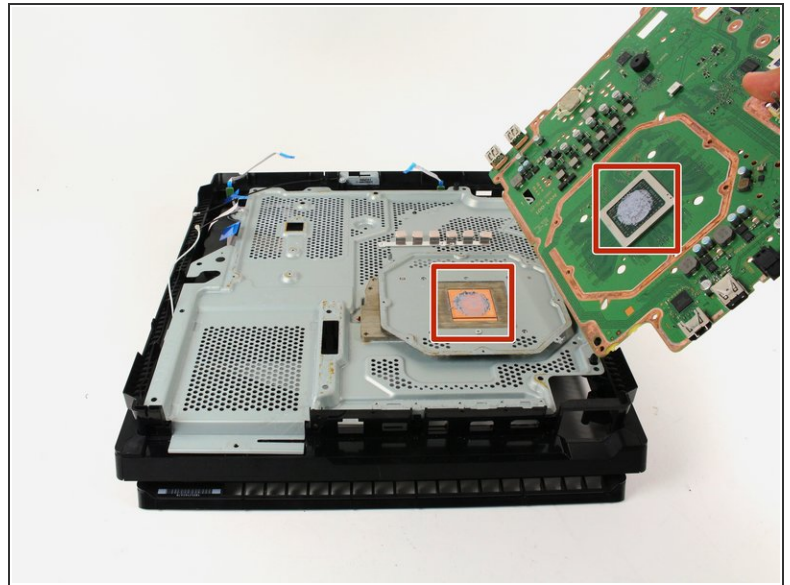
- Carefully flip the console over so the bottom is facing up.
- Use a Phillips #1 screwdriver to remove the eight 4mm screws on the metal plate with the X-like symbol.
- Use a plastic opening tool to remove the metal plate with the X-like shape.

Step 12



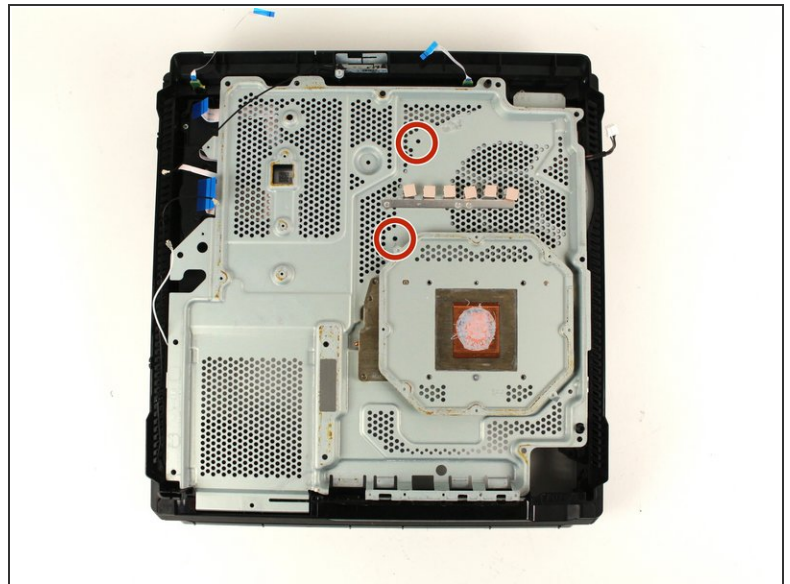
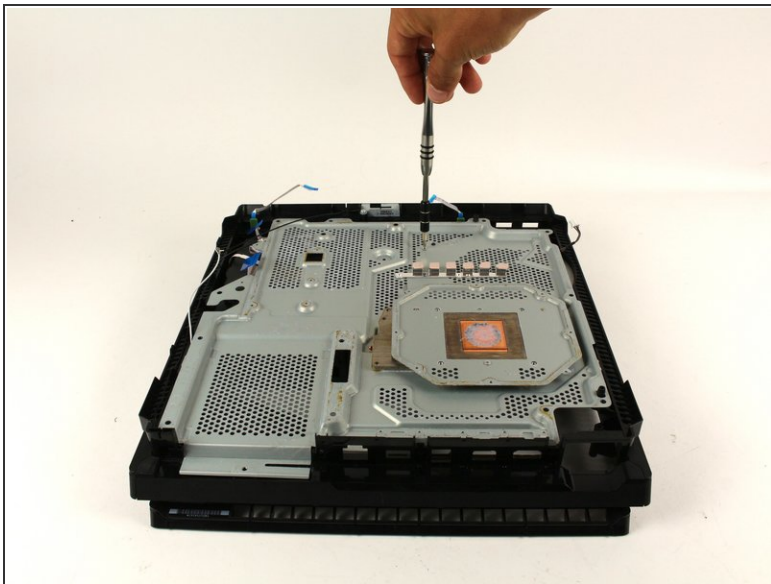
- Use a Phillips #1 screwdriver to remove the four 13mm screws on the X-shaped metal plate underneath.
- i** For **7200-series models** this is instead a S-shaped metal plate with 2 screws.
- Grip the X-shaped retaining bracket and lift straight up.

Step 13



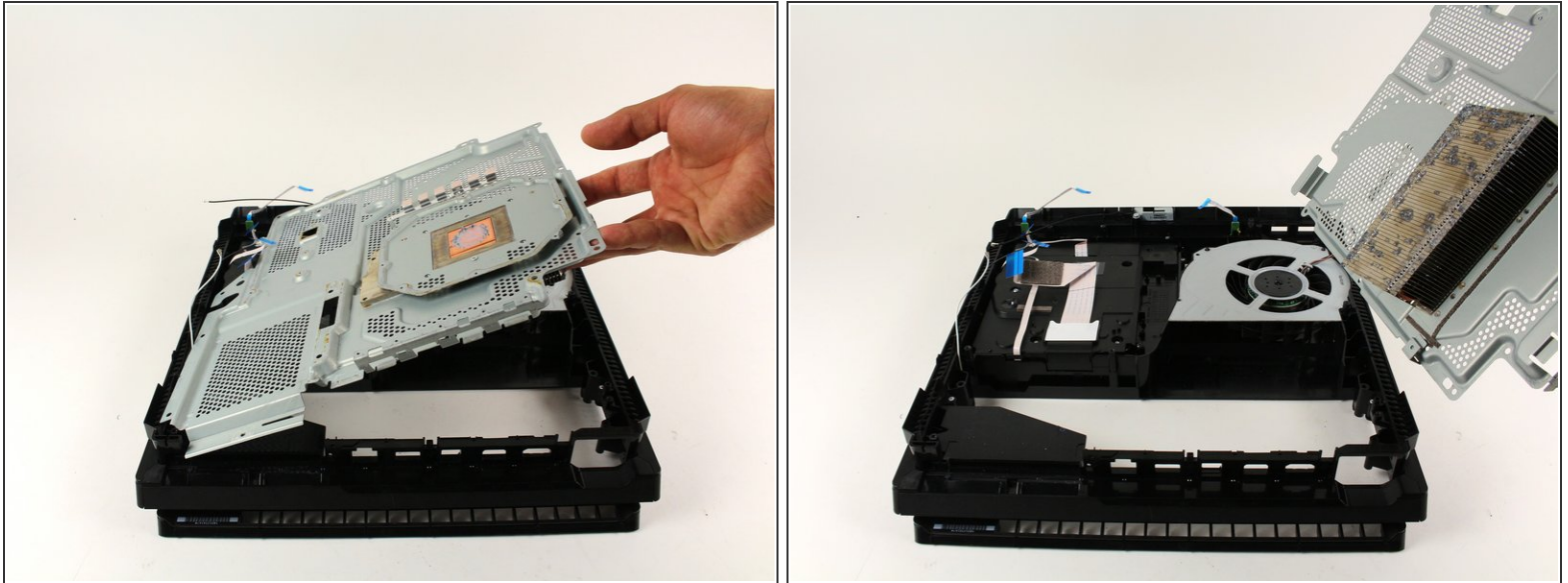
- Grip the edge of the motherboard and slowly lift upwards to remove it from the device.
- ☑ For reassembly, use [this guide](#) to reapply thermal paste between the motherboard and the metal plate underneath.

Step 14 — Heat Pipe



- Use a Phillips #1 screwdriver to remove the two 6 mm silver screws from the metal plate.

Step 15



- Lift the metal plate that is connected to the heat pipe straight up to remove it.

To reassemble your device, follow these instructions in reverse order.