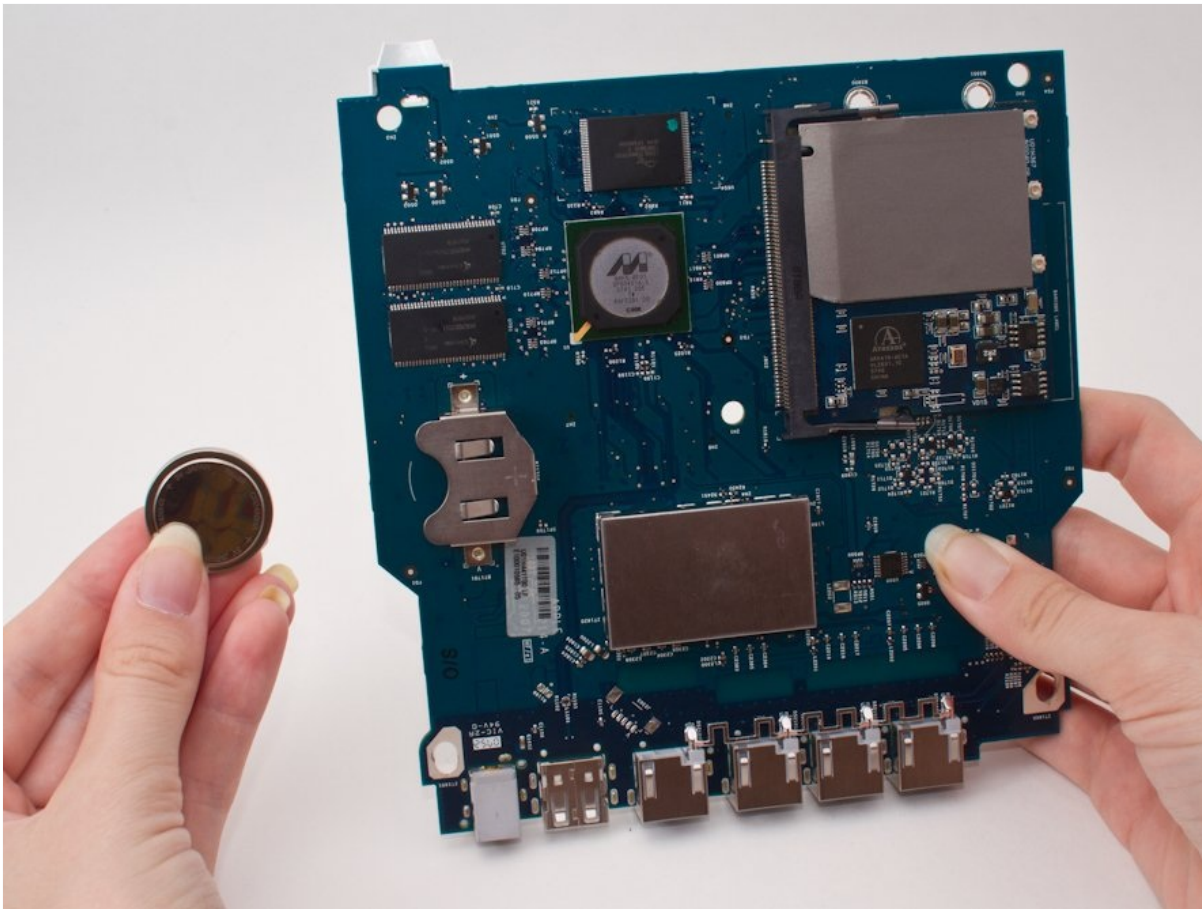




Apple AirPort Extreme Model A1354 Battery Replacement

If the base station does not turn on, the...

Written By: Alex Ly



INTRODUCTION

If the base station does not turn on, the battery may need to be replaced.

TOOLS:

Phillips #00 Screwdriver (1)
iFixit Opening Tool (1)


PARTS:

CR2450 (1)

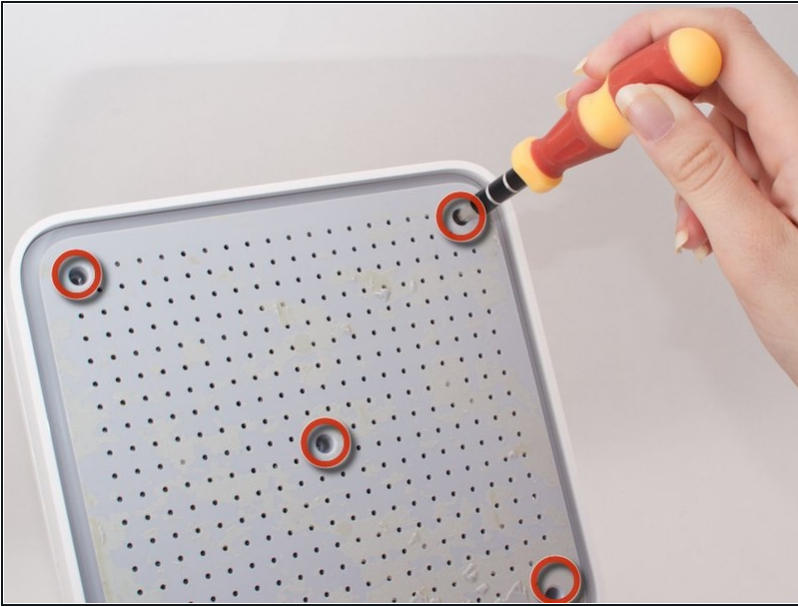
Step 1 — Outer Case



- First start by peeling off the outer rubbery covering on the bottom of the device.

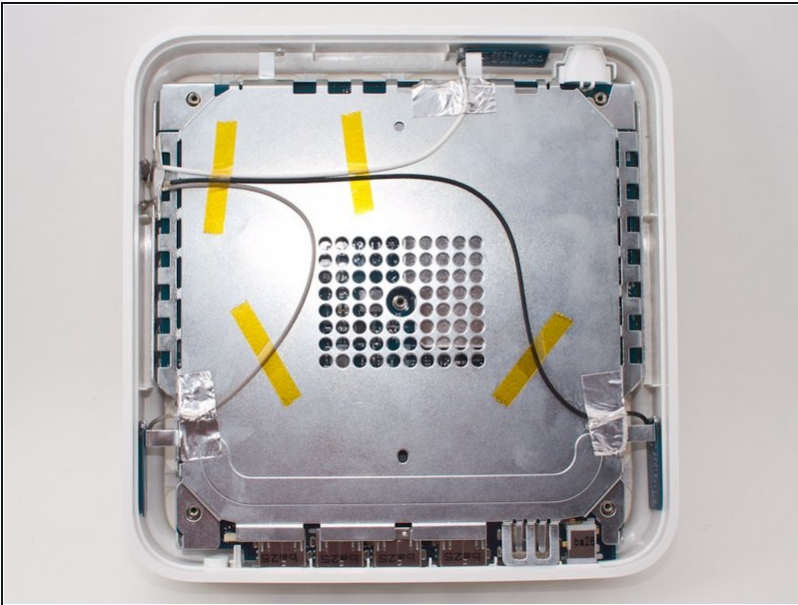
 **CAUTION:** This part is very fragile, so it is recommended that a blow dryer is used on the covering to heat it up. Simply blow dry the covering while slowly peeling it away, and the covering will not tear.

Step 2



- After removing the rubber covering, unscrew the five 4.9mm Phillips screws in the holes of the plastic casing.

Step 3



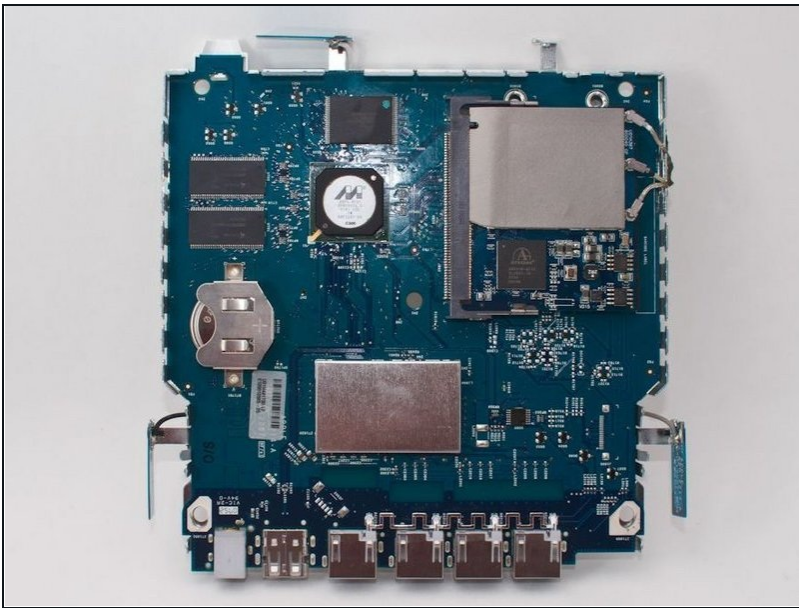
- After unscrewing all five screws, remove the plastic casing. The back should now look like the picture shown.

Step 4



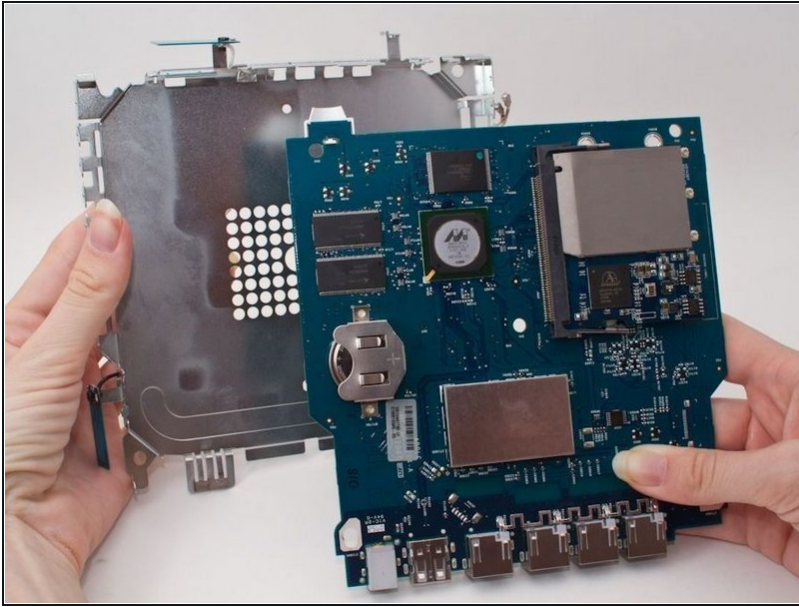
- The inner metal casing is latched inside the outer white plastic shell, so insert a pry tool underneath the metal casing and pry it apart from the shell.
- It should make a click when it comes apart.

Step 5



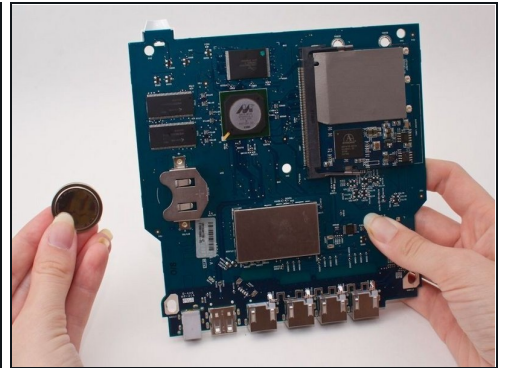
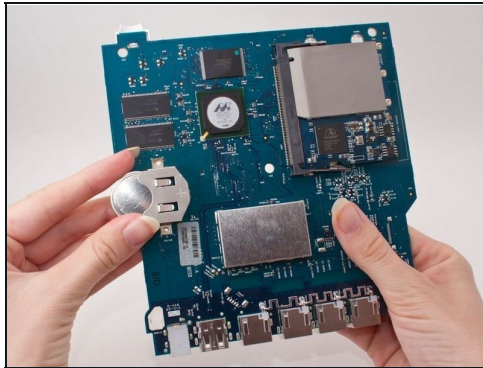
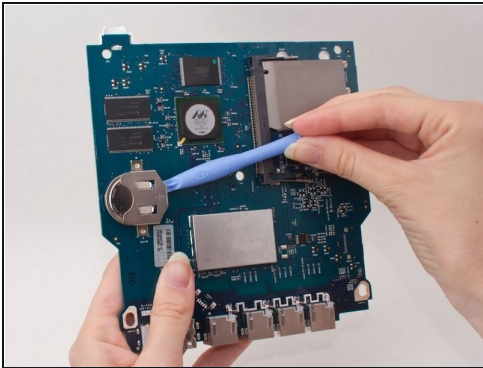
- Remove the outer casing.
- The exposed logic board should look like this.

Step 6 — Battery



- Remove the metal casing by gently prying the logic board away with your hands.
- This should be pretty easy, you already removed the screws holding these pieces together.

Step 7



- Remove the battery by gently "shoving" it out with the plastic tool.

To reassemble your device, follow these instructions in reverse order.