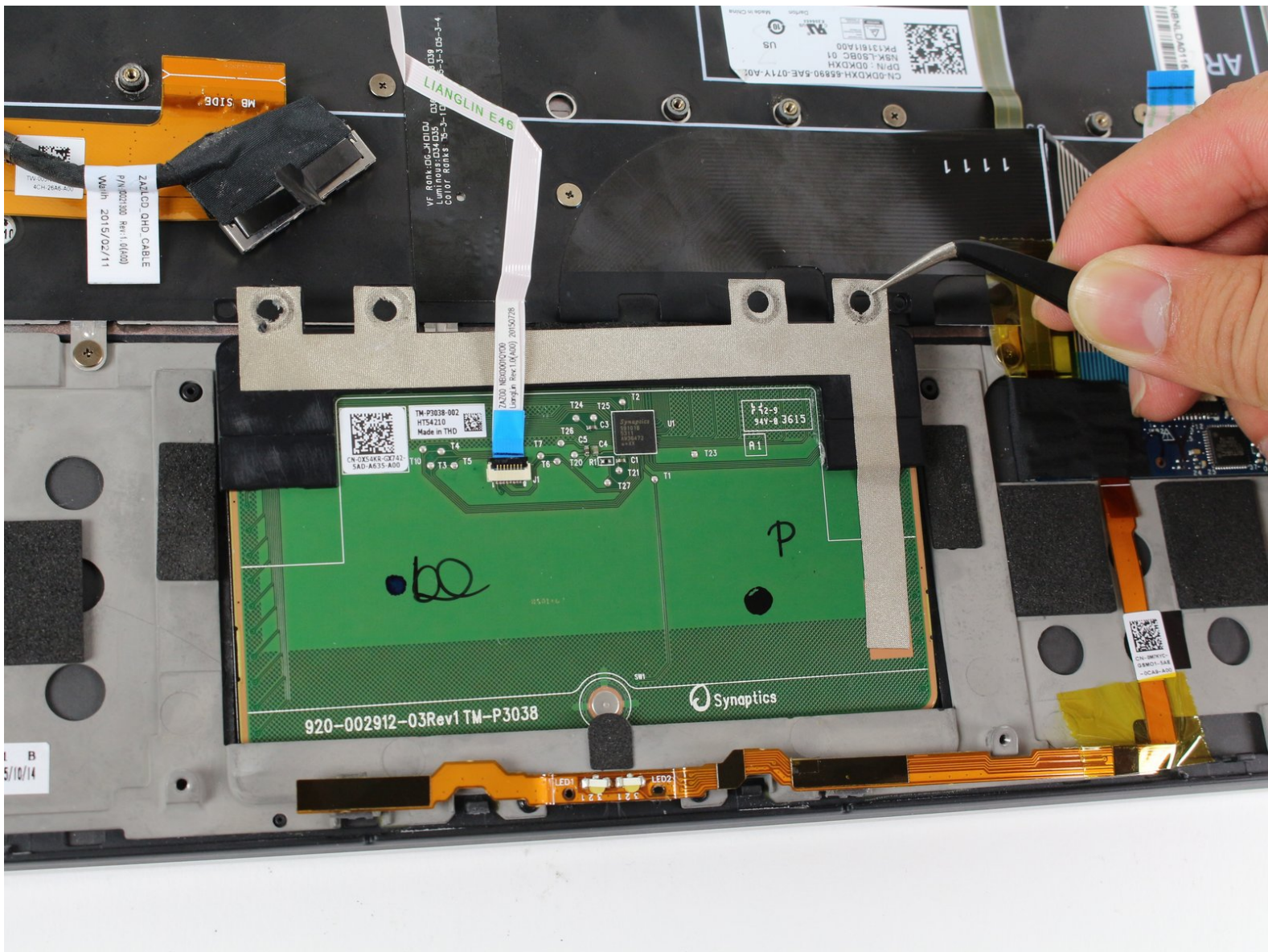




Written By: Arvind Krish



Page 1 of 9

# INTRODUCTION

Use this guide to replace the track pad in the Dell XPS 13.



## TOOLS:

- [iFixit Opening Picks \(Set of 6\)](#) (1)
  - [Spudger](#) (1)
  - [T5 Torx Screwdriver](#) (1)
  - [Tweezers](#) (1)
  - [iFixit Opening Tool](#) (1)
  - [Phillips #0 Screwdriver](#) (1)
  - [Phillips #1 Screwdriver](#) (1)
-

## Step 1 — Back Cover



- Remove the eight 4 mm T5 Torx screws from the bottom cover.

## Step 2



- Use a plastic opening tool to pry open the 'XPS' flap in the middle.



## Step 3



- Remove the single Phillips screw hidden beneath the flap.

## Step 4



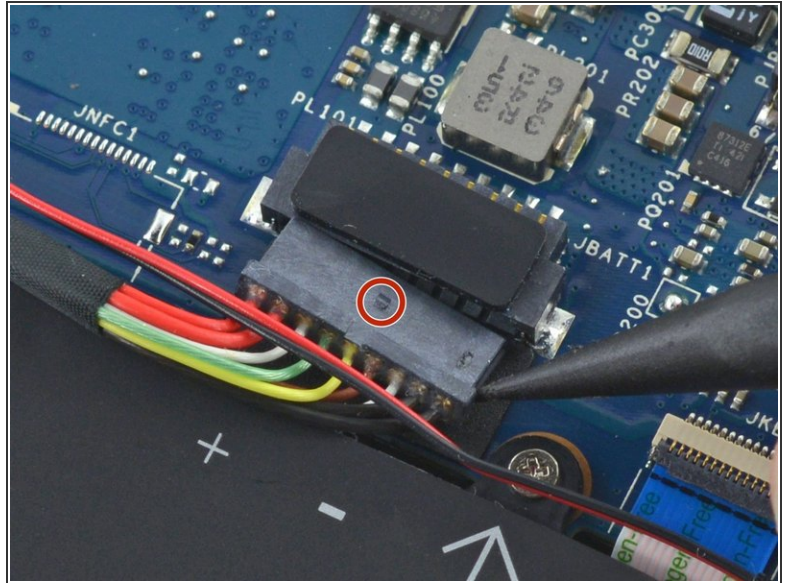
- Use opening picks or a plastic pry tool to pry open the case clips, beginning from the back edge.

## Step 5



- Remove the bottom cover.

## Step 6 — Battery Disconnection



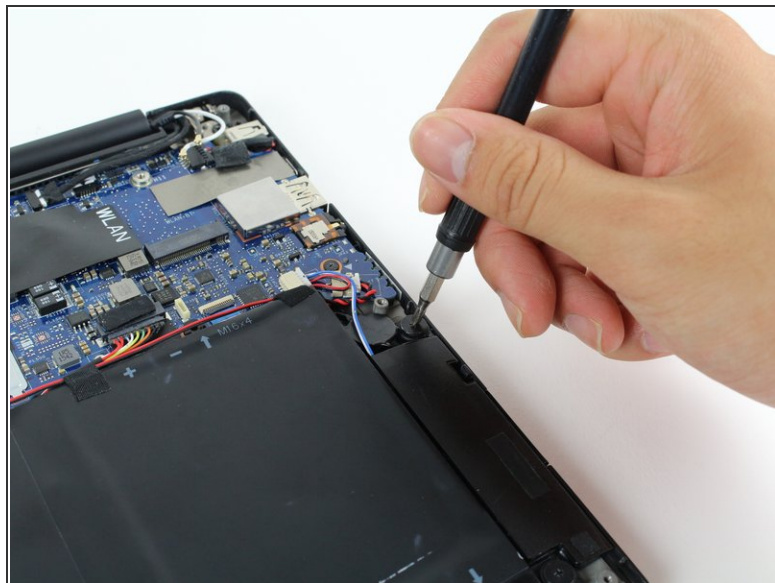
- Pull the battery cable connector towards the battery to disconnect it from its socket.
  - If the connector is stubborn, push a little at one side, then the other, to "walk" it out of its socket.
  - If you have trouble walking the connector out of the socket, use the point of a spudger to gently push on the connector indent to slide the connector out.

 **Do not pull up.**

- Open the display and press the power button for five seconds to drain any remaining charge from the system.

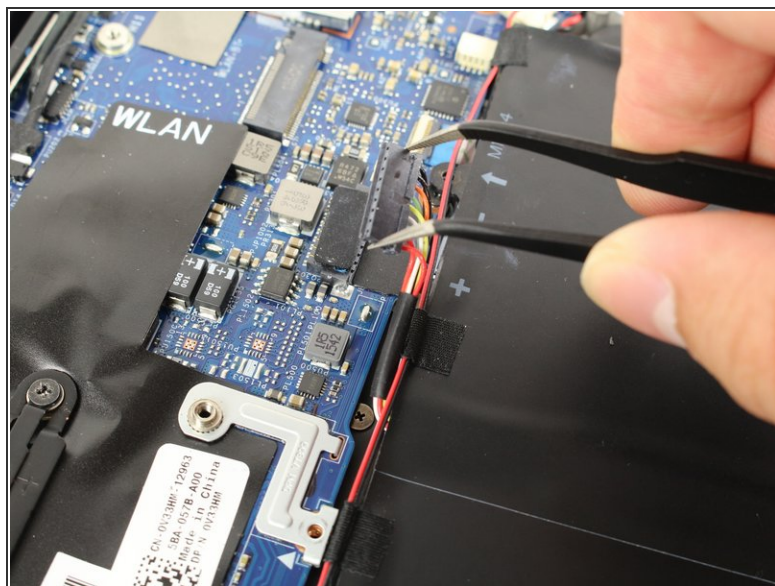
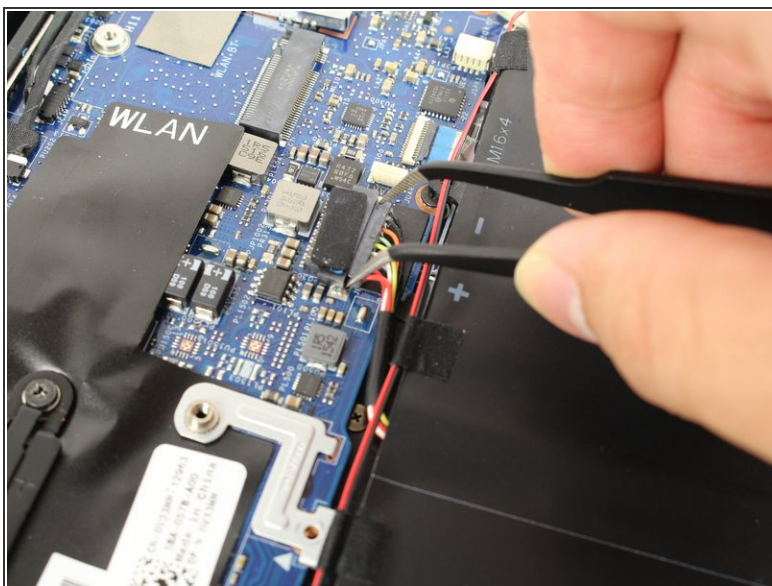


## Step 7 — Battery



- Remove the four 3 mm Phillips #0 screws located on each corner of the battery.

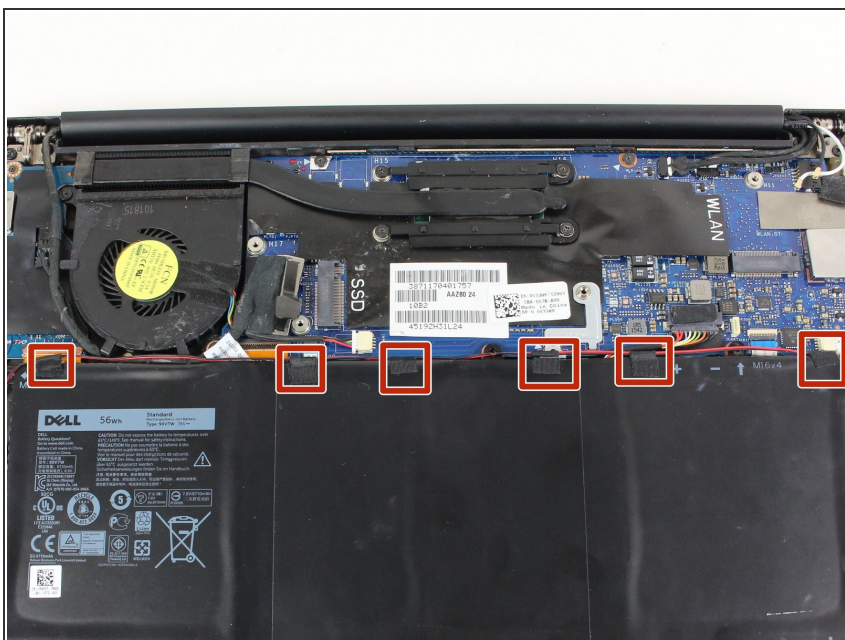
## Step 8



- Pull the battery cable connector towards the battery to disconnect it from its socket.

**⚠ Do not pull up.**

## Step 9



- Peel up any tape securing the speaker cables to the battery.
- ⓘ You do not need to remove the speakers, only the tape, allowing the battery to be removed out under the speaker cables.

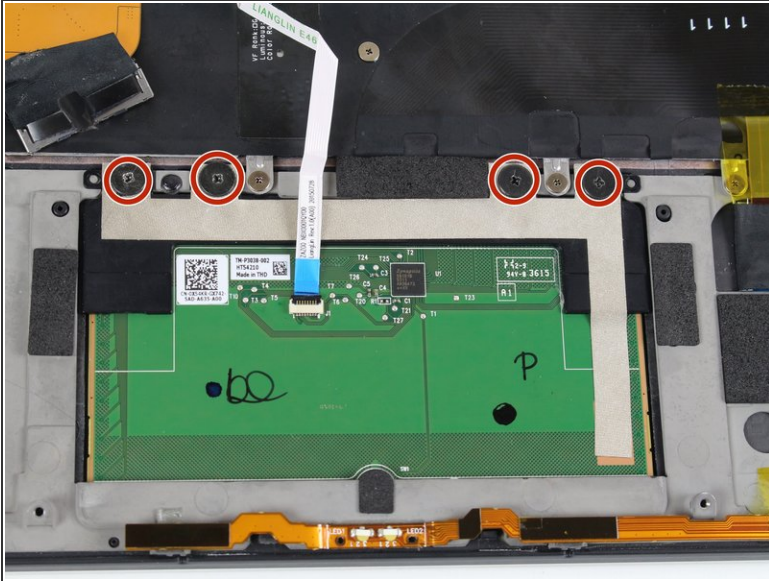
## Step 10



- Remove the battery.

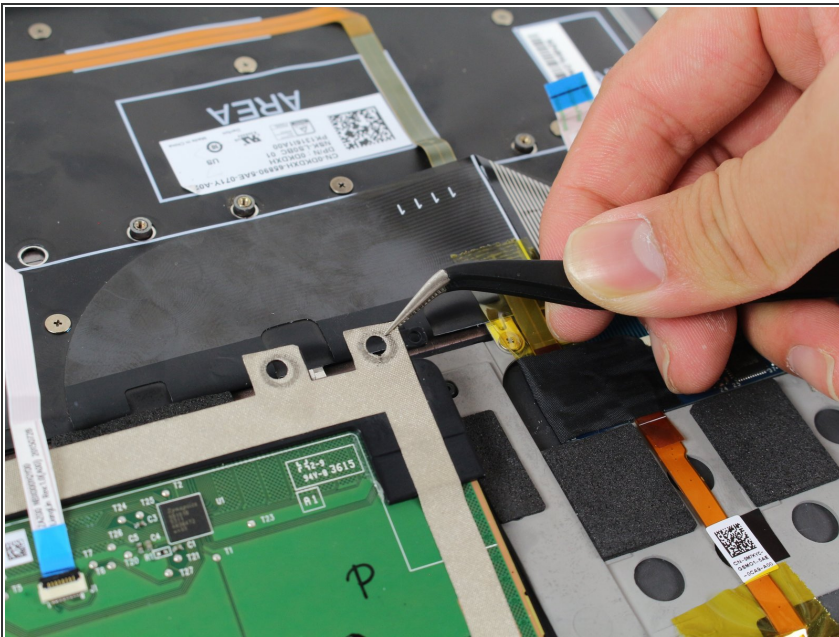


## Step 11 — Track Pad



- Remove the four 3 mm Phillips #1 screws from the trackpad.

## Step 12



- Use tweezers to gently lift the upper-right corner of the track pad.
- Remove the track pad by slowly pulling it up and away from you.

To reassemble your device, follow these instructions in reverse order.