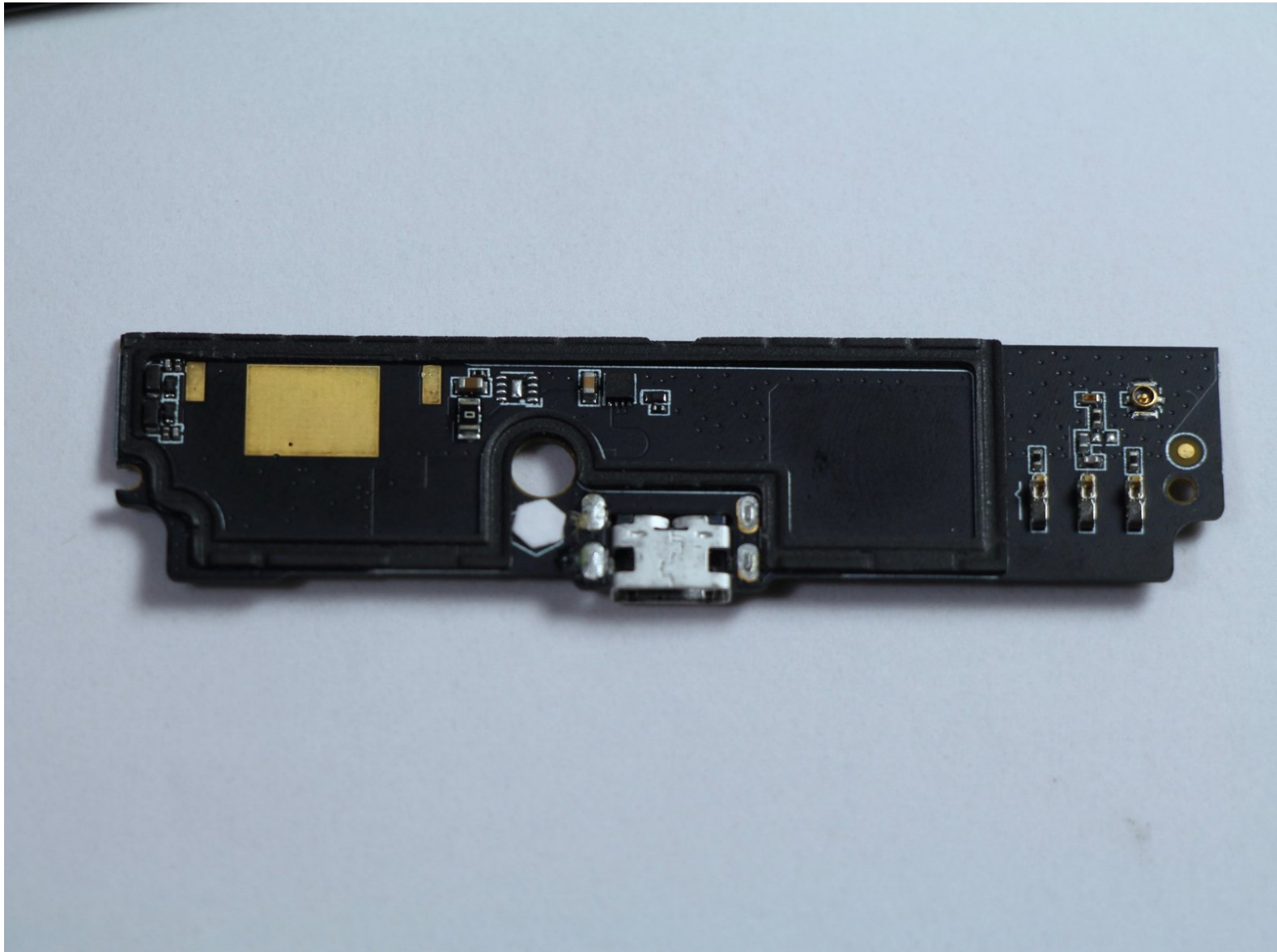




# Xiaomi Redmi Note Charging Port Replacement

Replace the charging port on the Xiaomi Redmi Note if your phone will not charge.

Written By: Caitlin Settles



---

## INTRODUCTION

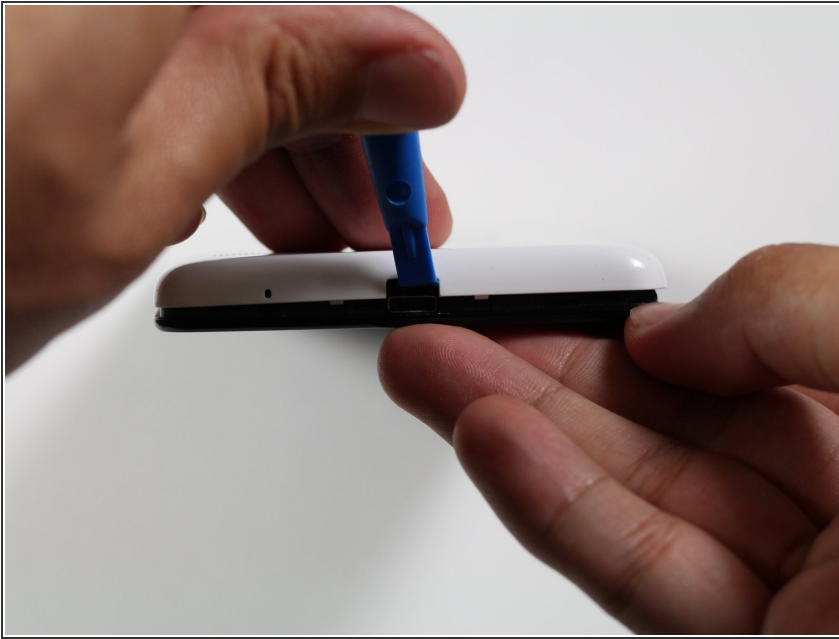
This guide will show you how to replace the connector between your charging cable and your phone. Replacing this component may be useful if your phone's charging port can no longer make a solid connection with your charging cable due to damage or debris.



### TOOLS:

- [iFixit Opening Tools](#) (1)
  - [Tweezers](#) (1)
  - [Phillips #00 Screwdriver](#) (1)
-

## Step 1 — Battery



- ❗ Make sure the Xiaomi Redmi Note is powered off before removing the battery.
- Insert the plastic opening tool between the charging port and the rear case.
- Pry the end of the rear case up from the charging port.

## Step 2



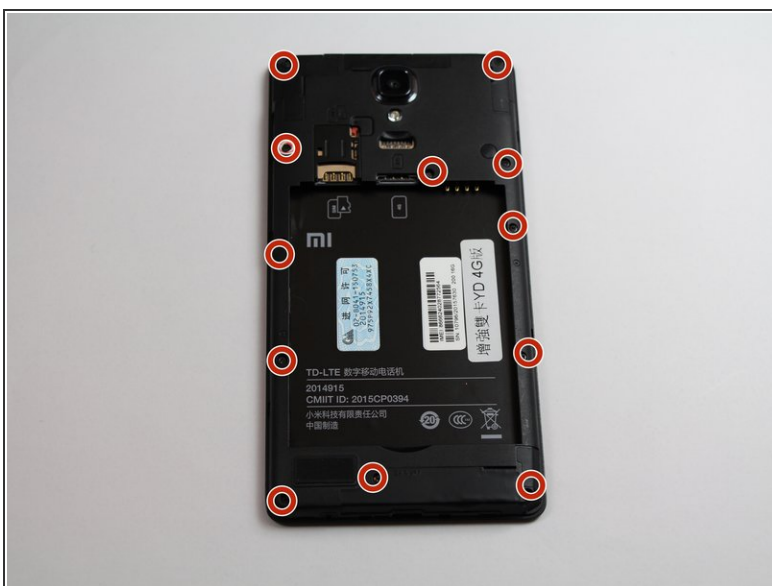
- Run the plastic opening tool along the seam on the side of the phone to remove the rear casing.

### Step 3



- Locate the indentation at the bottom of the battery.
- Place a finger in the indentation and lift up to remove the battery.

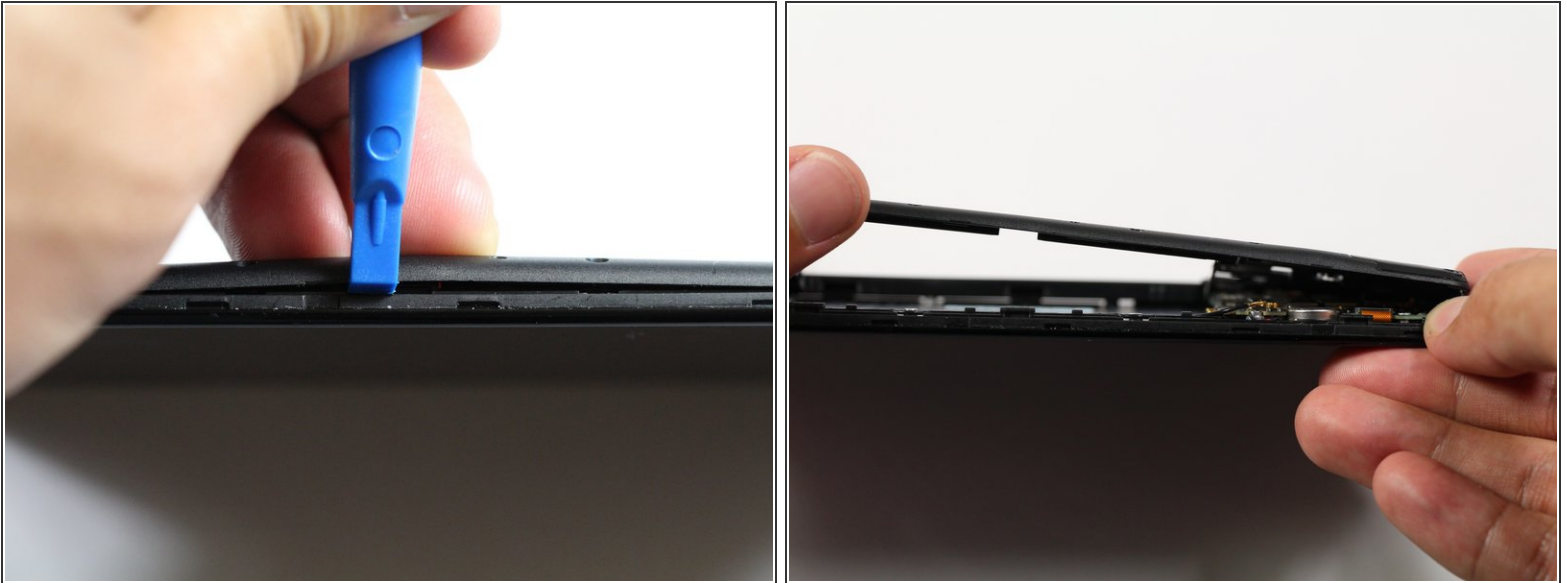
### Step 4 — Midframe




- Remove twelve 3.5mm Phillips #00 screws from the midframe.

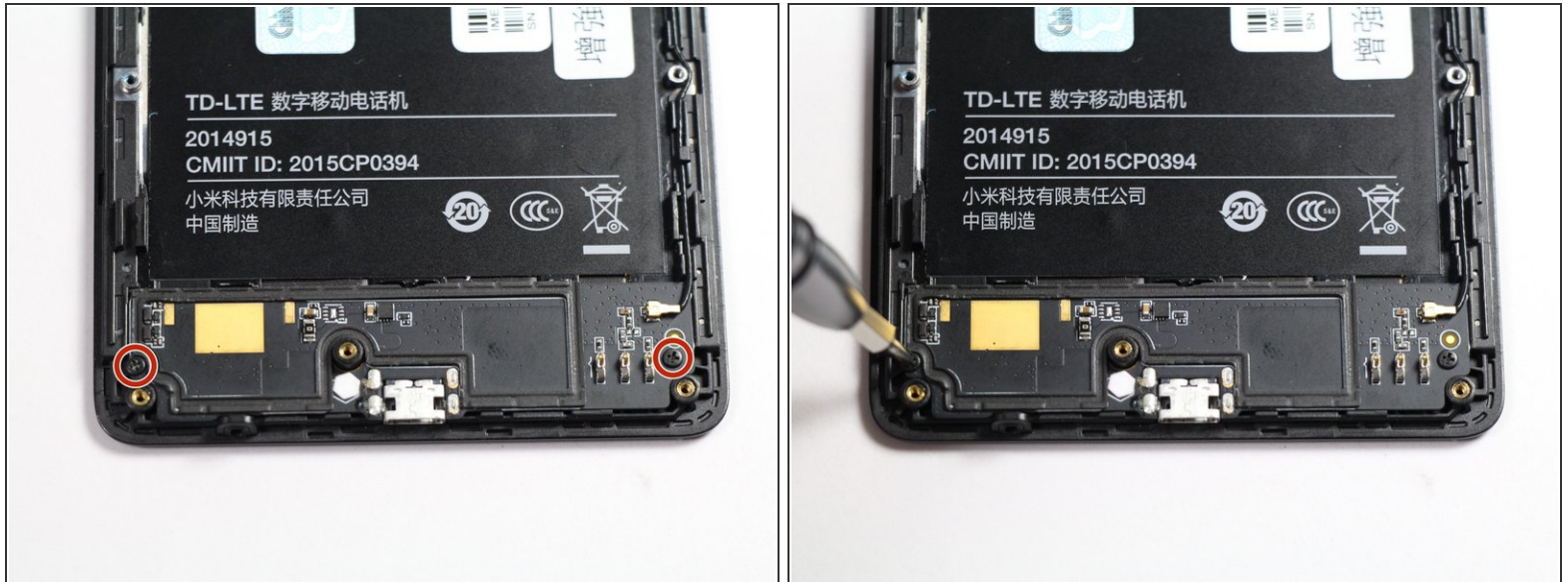


## Step 5



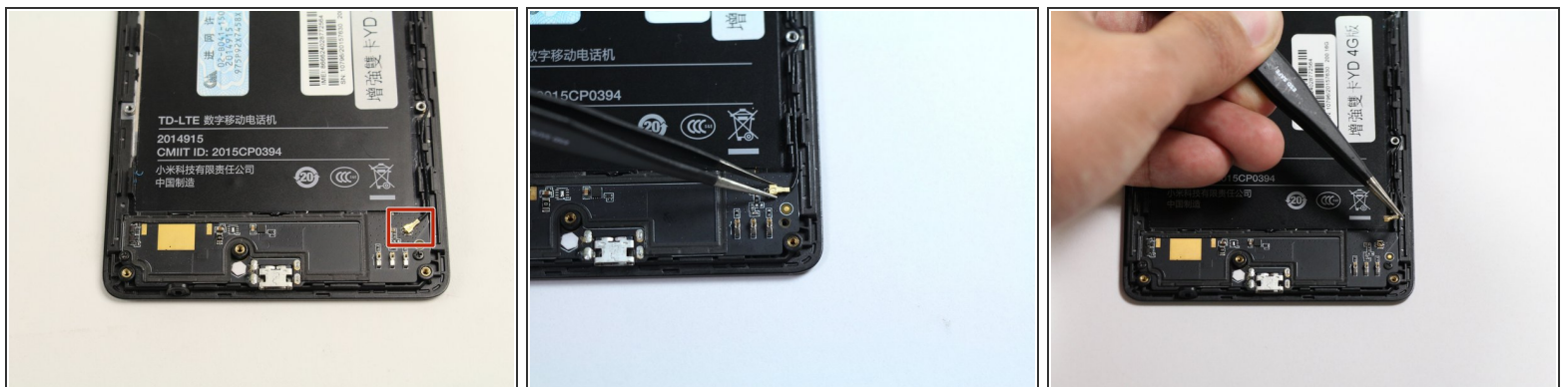
- Insert a plastic opening into the seam between the midframe and the bottom frame of the phone.
  - Run the plastic opening tool along the seam.
  - Pry up the midframe with the plastic opening tool.
  - Once the midframe has been sufficiently lifted with the tool, place a hand underneath the edge to lift the entire component out of the frame.
-  There will be snapping sounds as the clips on the midframe disconnect from the phone.

## Step 6 — Charging Port



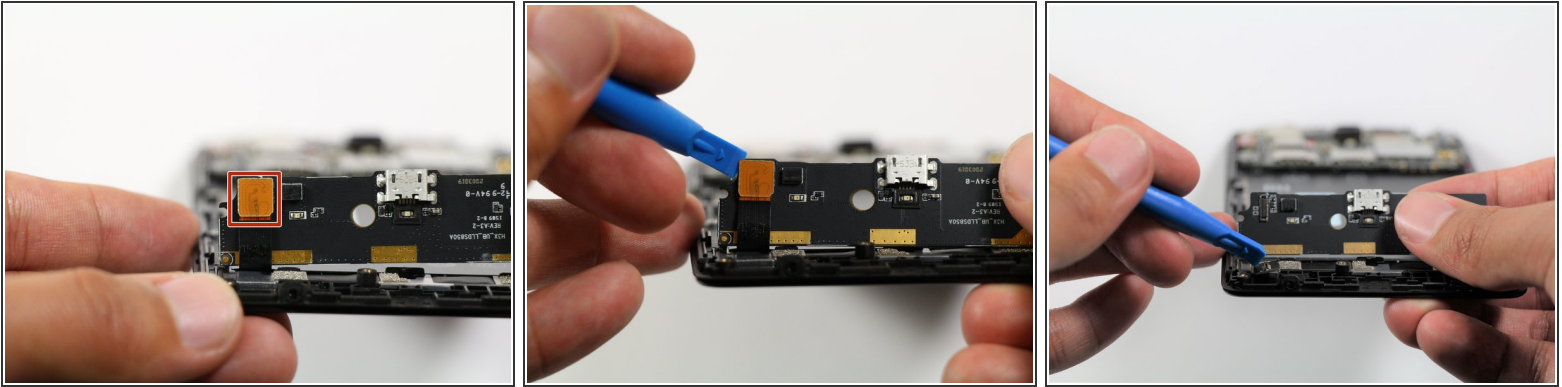
- Locate the charging port panel at the bottom of the device.
- Remove the 2.9 mm Phillips #00 screws on the sides of the panel.

## Step 7



- Locate the antenna cable at the top right corner of the charging port.
- Lift the antenna cable off of the panel with tweezers.

## Step 8



- Flip the panel to its back side, but do not fully lift it off of the phone yet.
- Use a plastic opening tool to gently pry off the press fit connector attached to the back side of the panel.

## Step 9



- Lift the charging port up to remove it from the frame.

To reassemble your device, follow these instructions in reverse order.