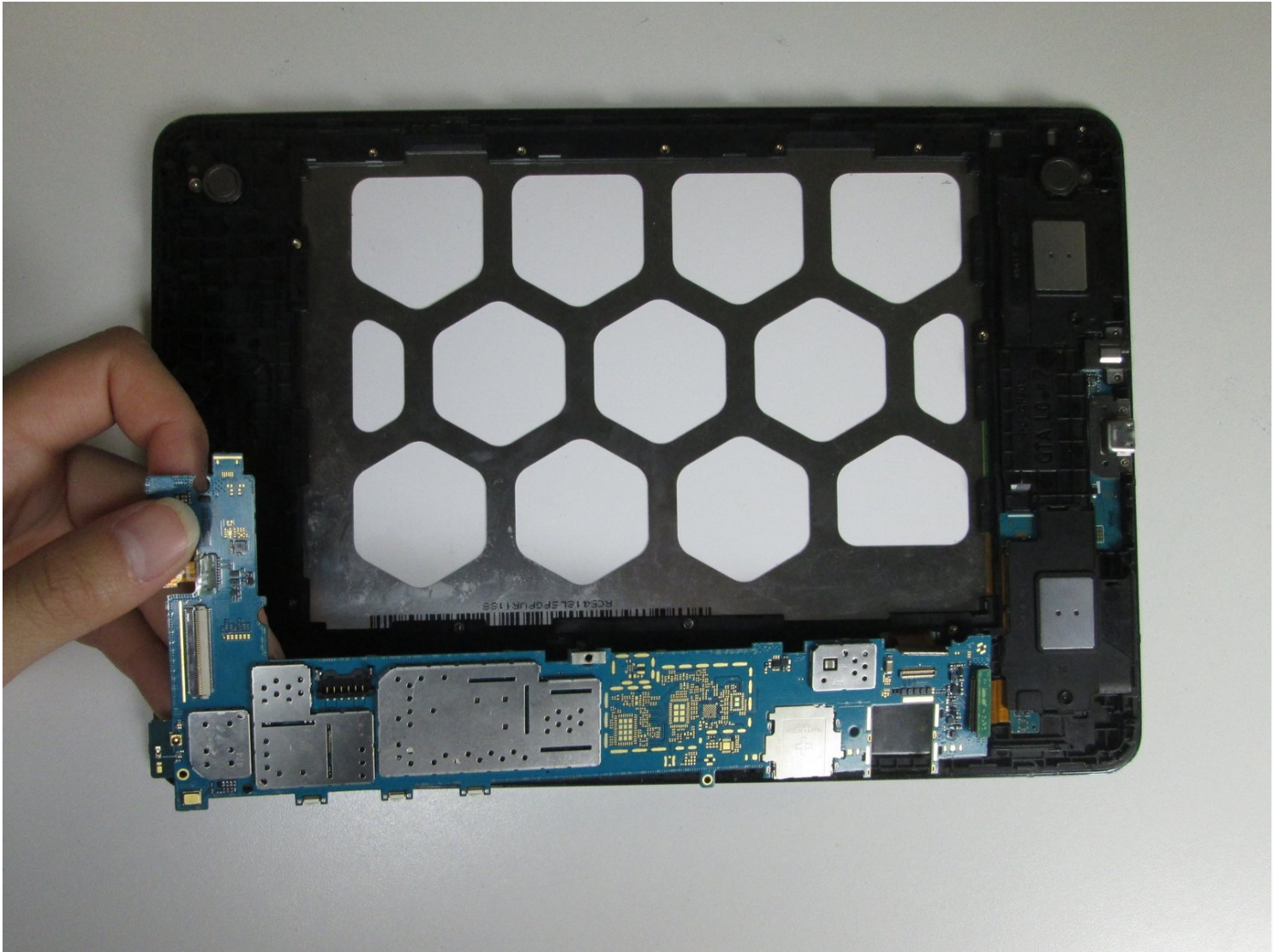




Samsung Galaxy Tab A 9.7 Motherboard Replacement

The motherboard is the central component for...

Written By: Paulina Nguyen



INTRODUCTION

The motherboard is the central component for your device and if it is damaged it will cause your device to most likely not function the way it should. This guide will help you replace the motherboard so that your device will have a completely new central system and be as good as new.

TOOLS:

[Metal Spudger](#) (1)
[Heavy-Duty Spudger](#) (1)
[Phillips #000 Screwdriver](#) (1)
[iFixit Opening Tool](#) (1)

PARTS:

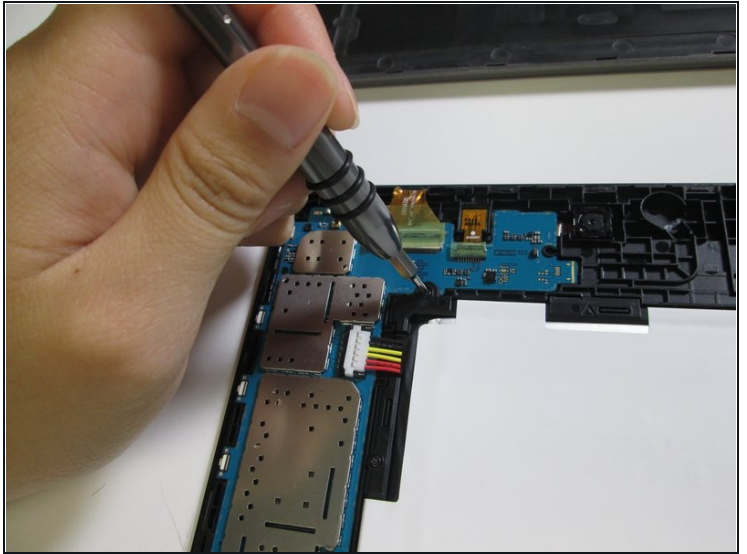
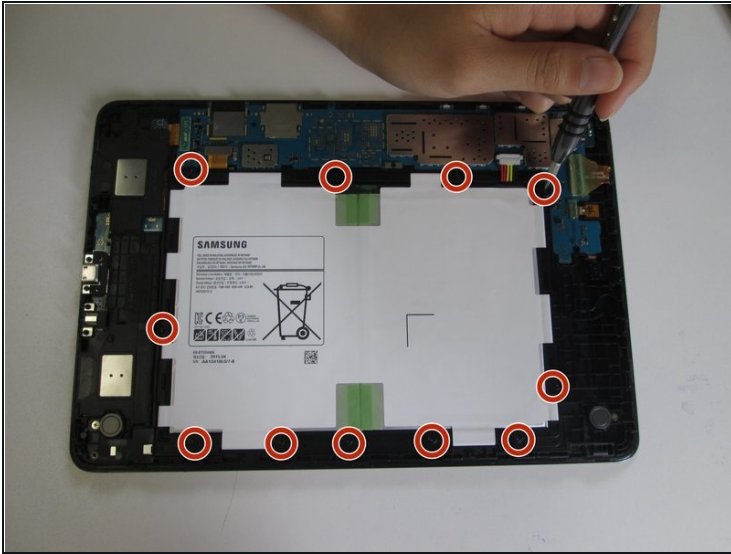
[Galaxy Tab A 9.7 Motherboard](#) (1)

Step 1 — Back Cover



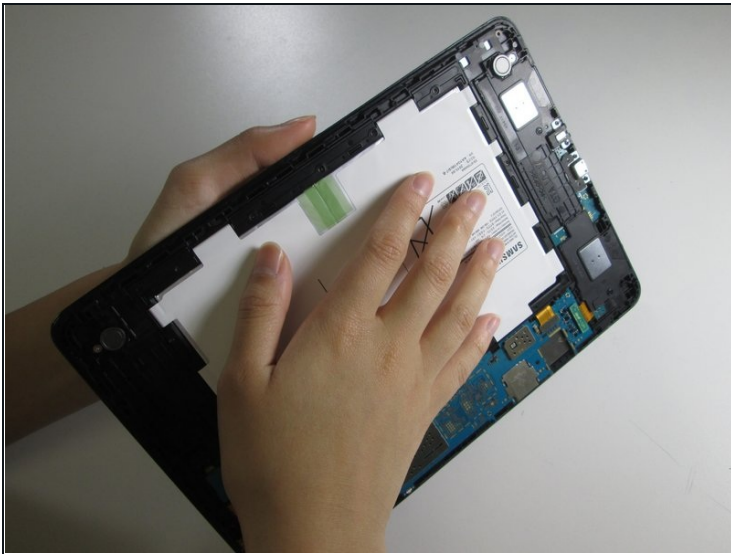
- Insert a metal spudger between the back case and the screen of the device.
- ⓘ The back cover is attached to the device by a series of snaps. The snaps are positioned about an inch from each other.
- Move the spudger along the perimeter of the device while it is in between the back case and the screen to open each snap.
- ⓘ There will be an audible click every time a snap releases.

Step 2 — Battery



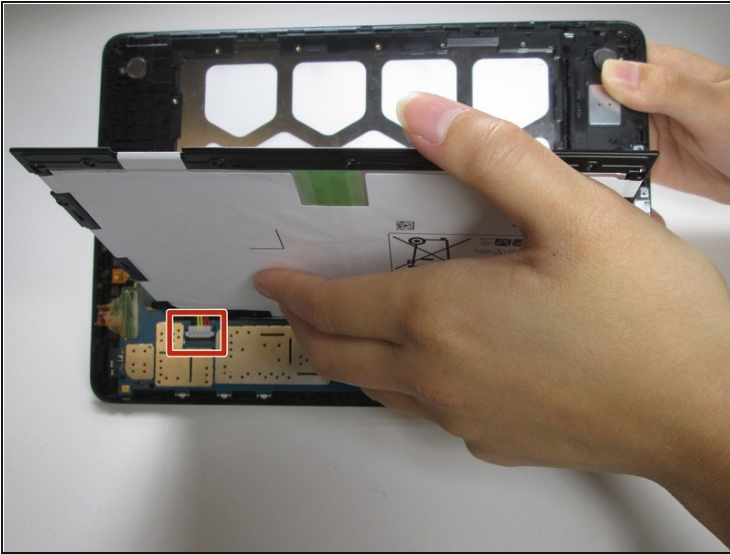
- Remove the eleven #000 Phillips 2.8mm screws that hold the battery in place.

Step 3



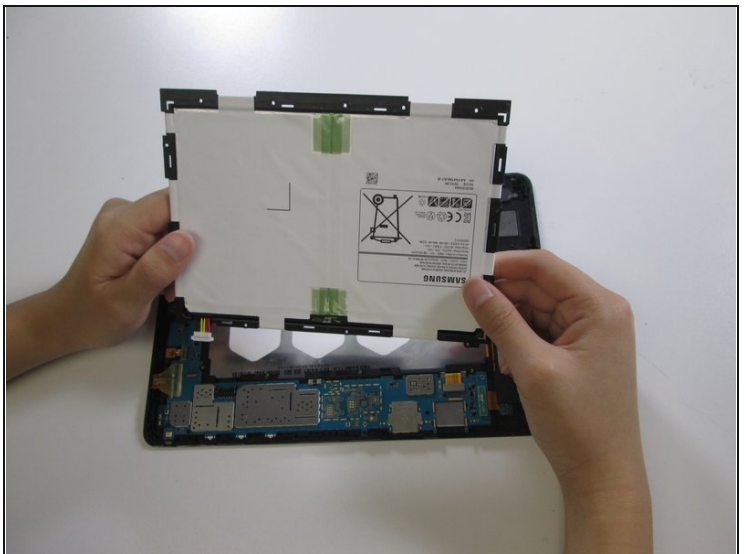
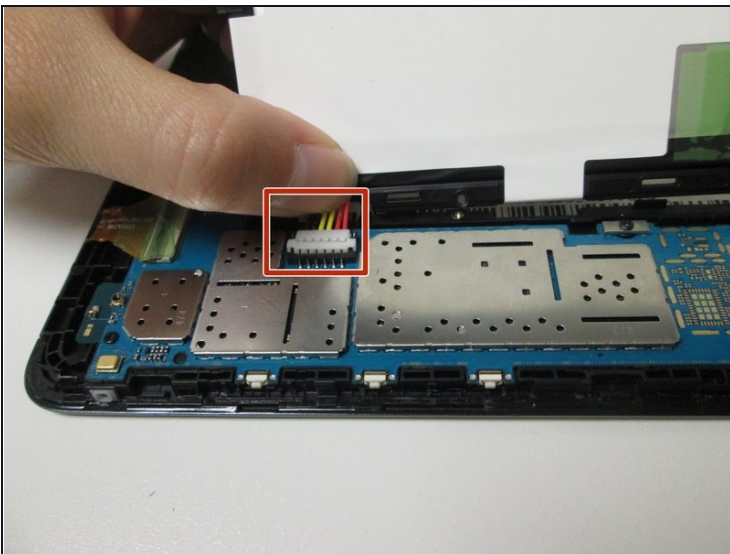
- Place one hand on the battery and grasp the outer edge of the device with the other hand.
- Flip the device over so that the battery falls over and onto your hand.

Step 4



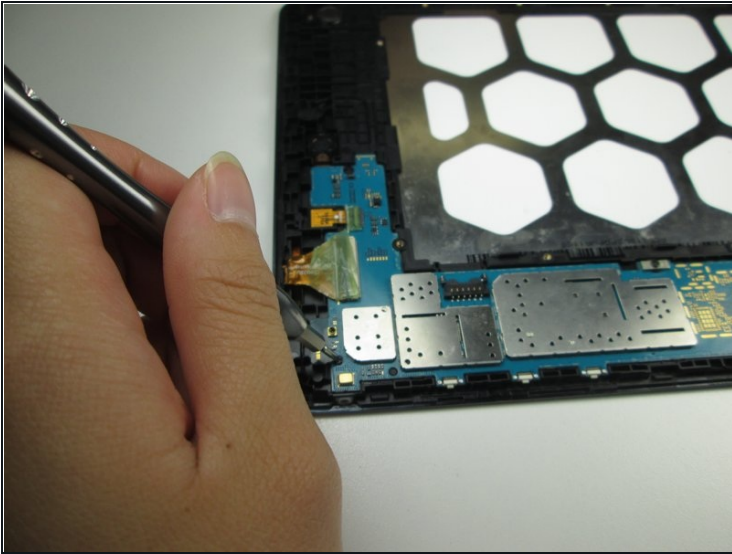
- Pull the battery out until it is only connected to the device by the black, yellow, and red connectors.

Step 5



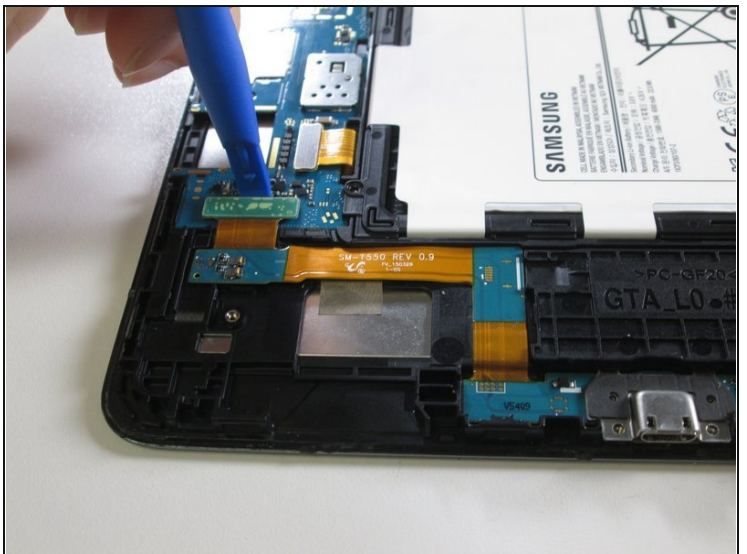
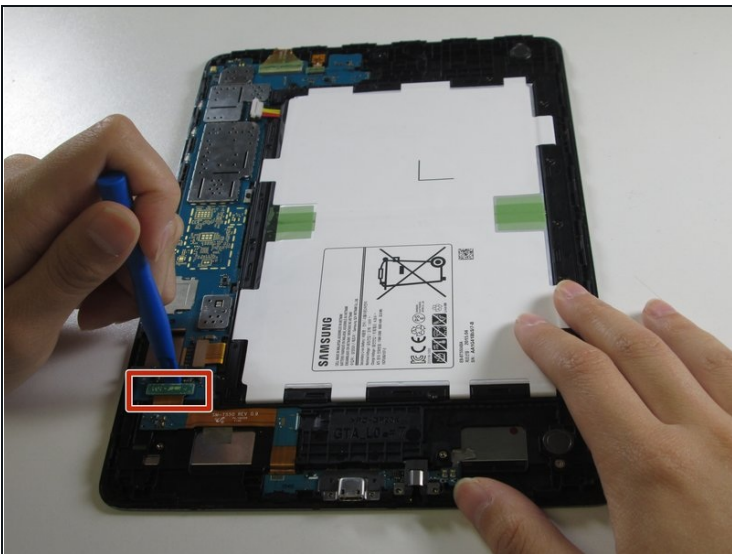
- Hold the battery and grip the wires with your thumb and finger.
- Pull the wires away from the device to remove the white connector from the black socket.
- Lift the battery away from the device.

Step 6 — Motherboard



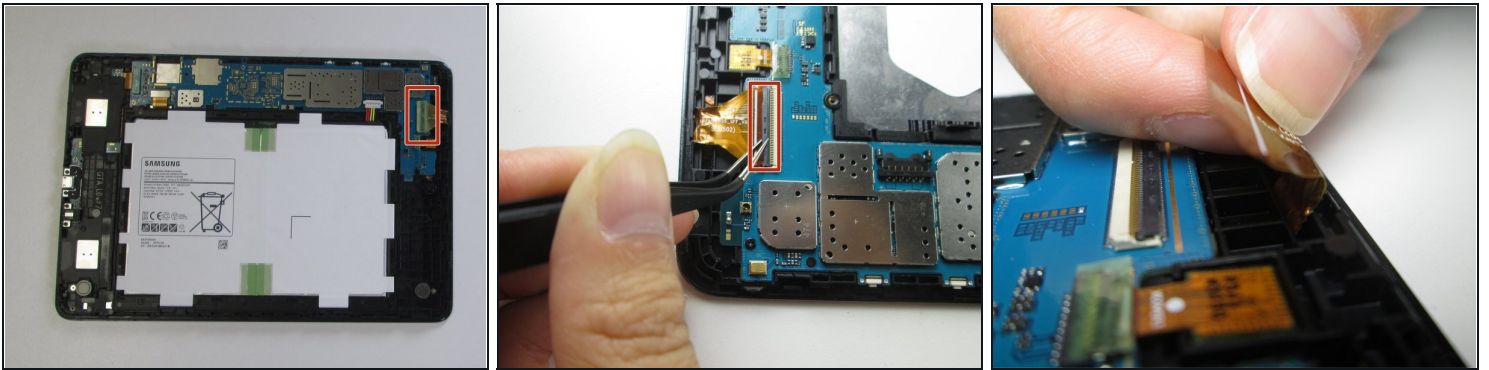
- Use a #000 Philips screwdriver to remove the three 2.8mm screws attaching the motherboard to the device.

Step 7



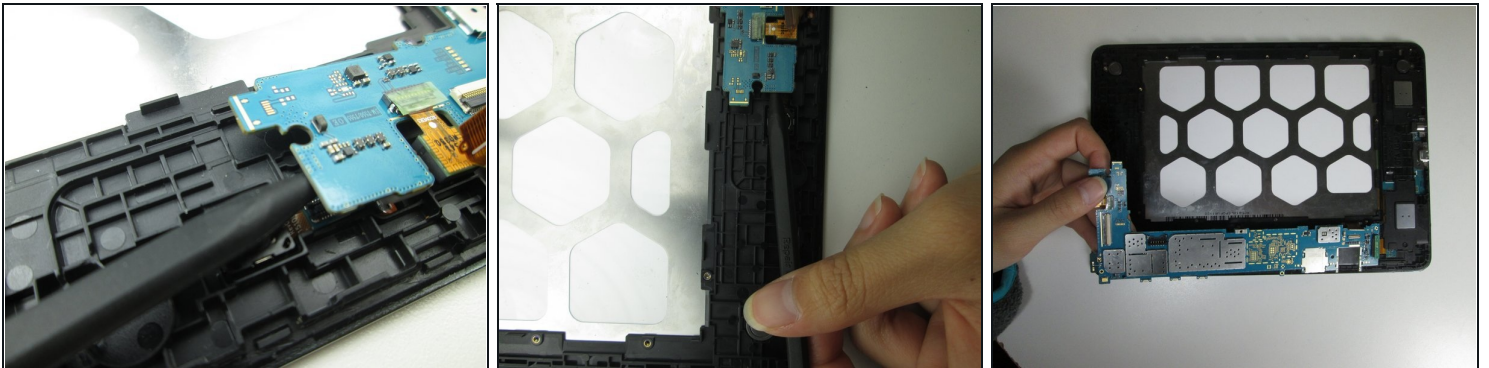
- Use a plastic opening tool to pry the two connectors near the charging port from the motherboard.

Step 8



- ⓘ The digitizer is connected to the motherboard near the top of the device. It must be disconnected to remove the motherboard.
- With your fingers, peel back the plastic sticker placed over the connector.
 - Using metal [tweezers](#), gently flip the now-exposed black portion of the connector up.
 - Gently pull the copper-covered portion of the connector away from the motherboard.

Step 9



- Using your fingers or a spudger, gently remove the motherboard from the device.
- ⚠ Keep in mind that both the front and back facing cameras are connected to the motherboard, so be careful when removing them.

To reassemble your device, follow these instructions in reverse order.