



# Altec Lansing BoomJacket Speaker Replacement

This guide will give step by step information on how to replace the speaker in your Altec Lansing BoomJacket.

Written By: Ryan Byrnes



# INTRODUCTION

Are your speakers not producing the same amount of BOOM that they used to? Perhaps repairing your speakers is the way to go.



## TOOLS:

- [Metal Spudger](#) (1)
- [Tweezers](#) (1)
- [Phillips #0 Screwdriver](#) (1)
- [Phillips #1 Screwdriver](#) (1)



## PARTS:

- [Rubber casing](#) (1)
- [Screws](#) (16)
- [Metal Backing](#) (1)
- [Metal Fronting](#) (1)
- [Speaker](#) (1)
- [Plugs](#) (6)

## Step 1 — Speaker



- Using your hands, remove the pegs (4+4) from the front and back of the speaker.

## Step 2



- Remove the outer black rubber housing of the speaker.



### Step 3



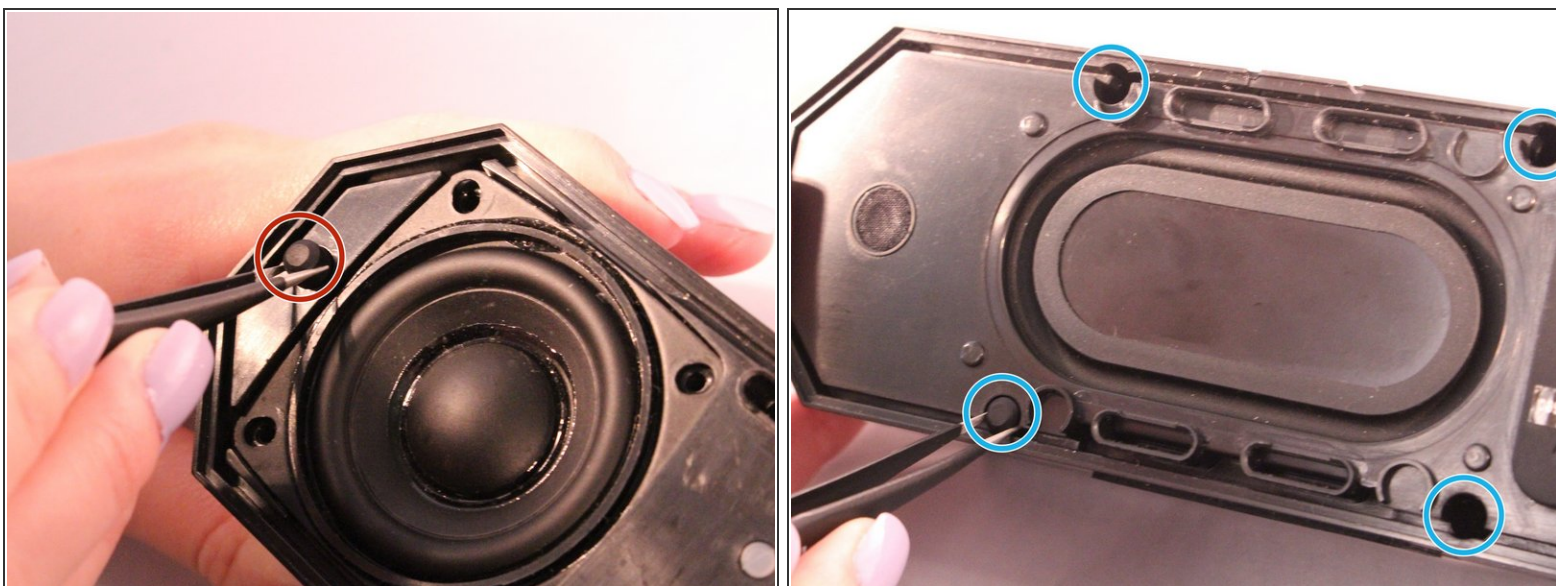
- Remove the inner blue rubber housing from the speaker.

### Step 4



- Pull out the two black wire meshes using a metal spudger.
- ⚠ Be careful not to damage the metal casing.

## Step 5



- Using tweezers remove the rubber stoppers (4 at the back + 2 at the front).

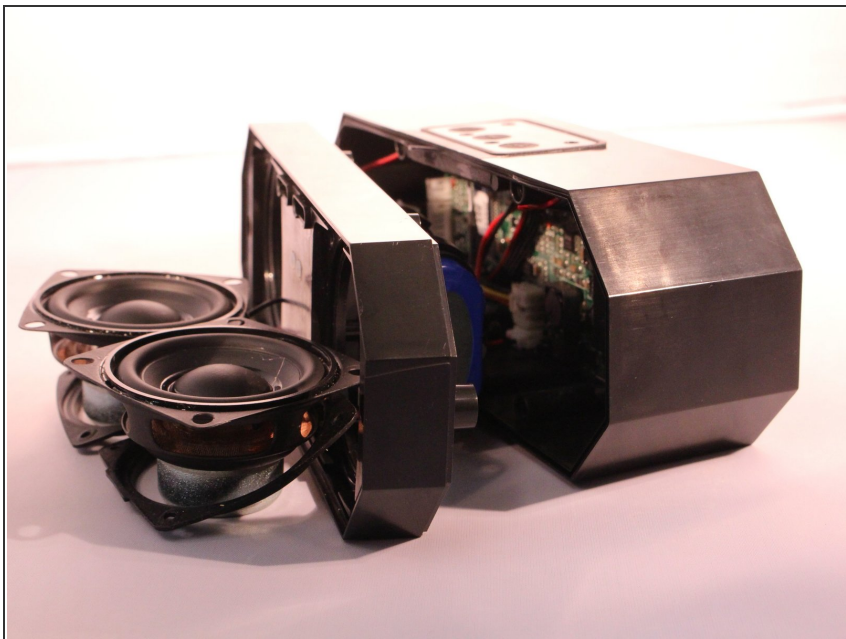
## Step 6



- Using the size PH1 screwdriver remove the screws (4 around each speaker).



## Step 7



- Pull the case apart and you will be able to see all the components inside the speaker.

## Step 8



- Remove the speakers (not entirely because of the wiring) by gently pulling each speaker up.

To reassemble your device, follow these instructions in reverse order.