



Altec Lansing BoomJacket Power Button Replacement

Will your device not turn on or off? Your power...

Written By: Ryan Byrnes



INTRODUCTION

Will your device not turn on or off? Your power button is likely the reason.

TOOLS:

Phillips #0 Screwdriver (1)
Phillips #1 Screwdriver (1)
Metal Spudger (1)
Tweezers (1)

PARTS:

Rubber casing (1)
Screws (16)
Metal Backing (1)
Metal Fronting (1)
Plugs (6)

Step 1 — Case Removal



- Using your hands, remove the pegs (4+4) from the front and back of the speaker.

Step 2



- Remove the outer black rubber housing of the speaker.

Step 3



- Remove the inner blue rubber housing from the speaker.

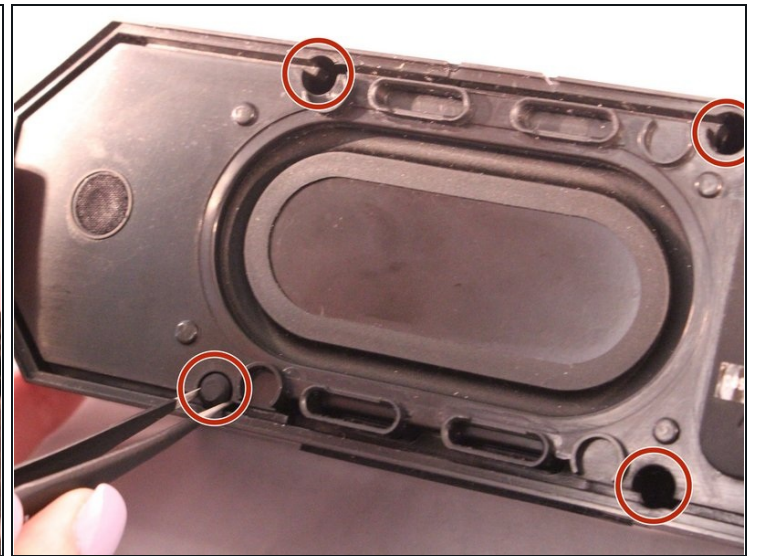
Step 4



- Pull out the two black wire meshes using a metal spudger.

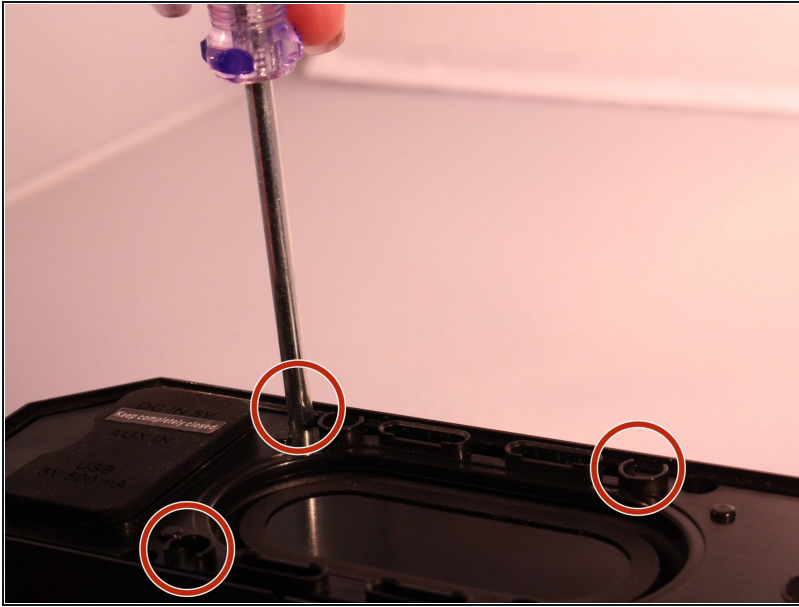
⚠ Be careful not to damage the metal casing.

Step 5



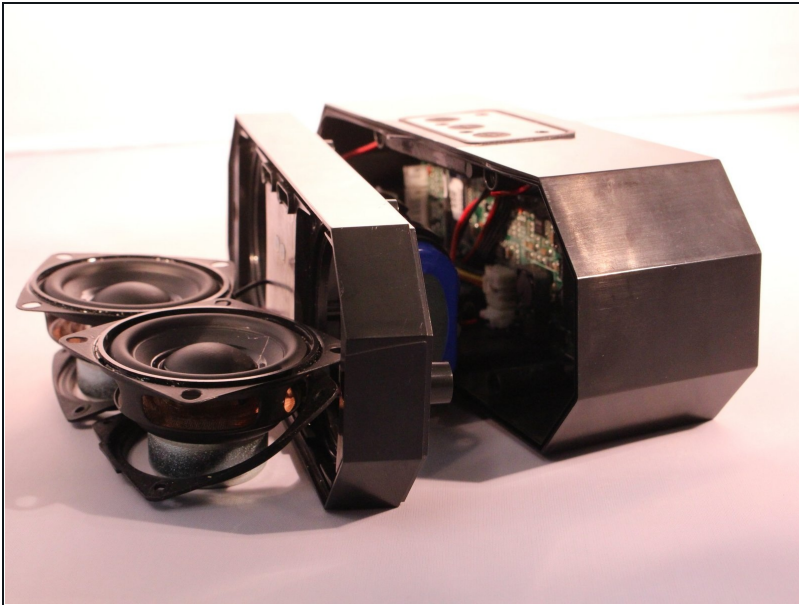
- Using [tweezers](#) remove the rubber stoppers (4 at the back + 2 at the front).

Step 6



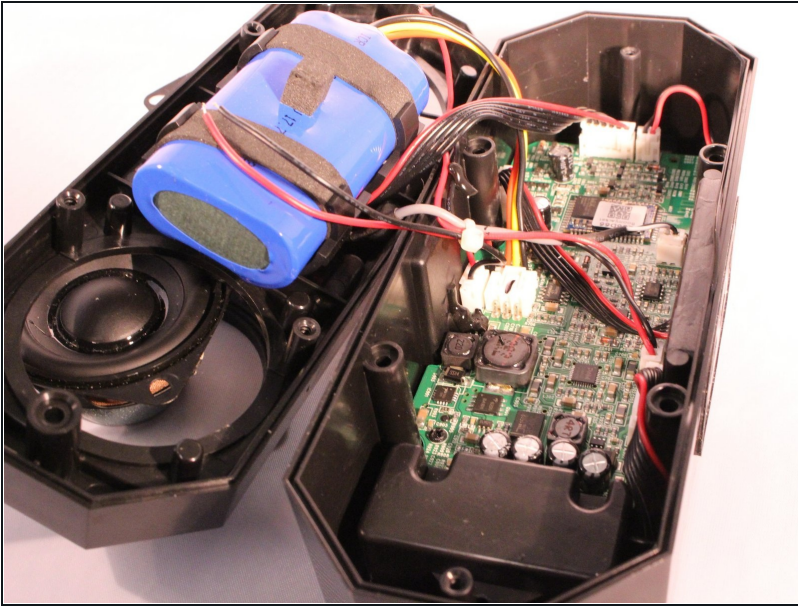
- Using the size PH1 screwdriver remove the screws exposed from the rubber stoppers (4 + 2).

Step 7



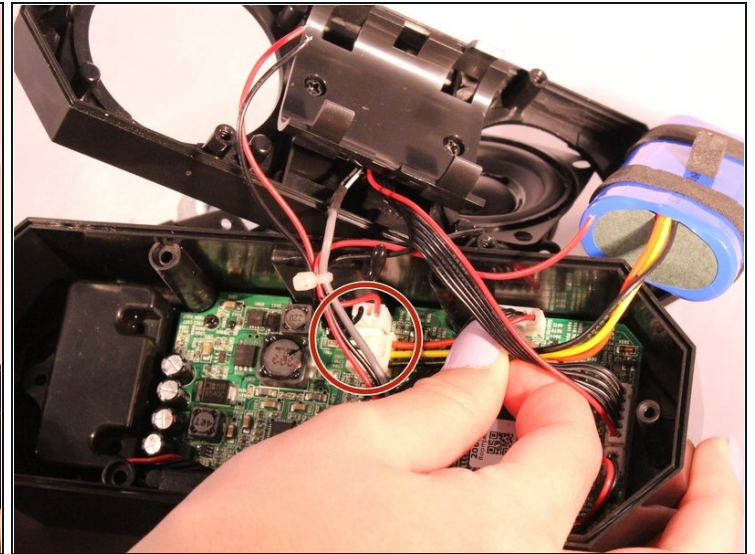
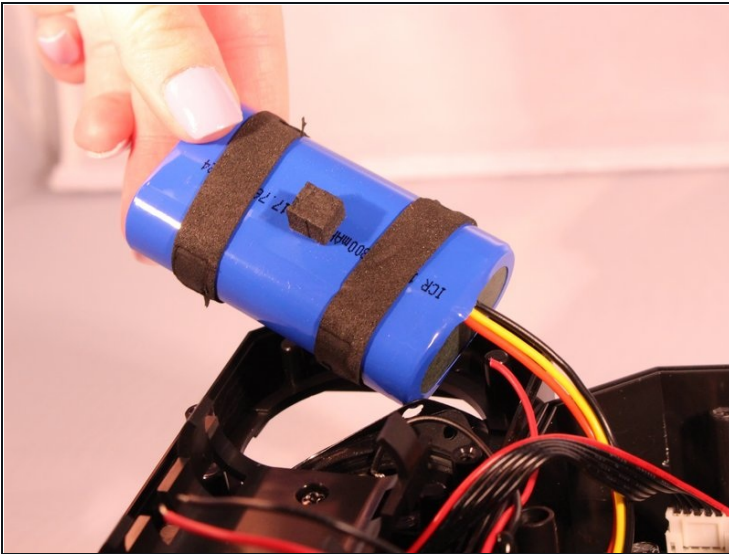
- Pull the case apart and you will be able to see all the components inside the speaker.

Step 8 — Power Button



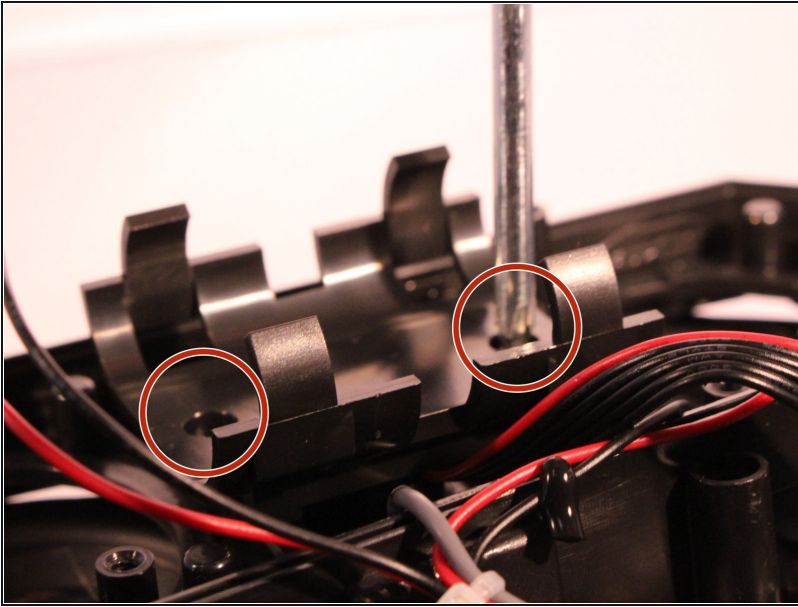
- The battery will be sitting right behind the speakers when the case is open.

Step 9



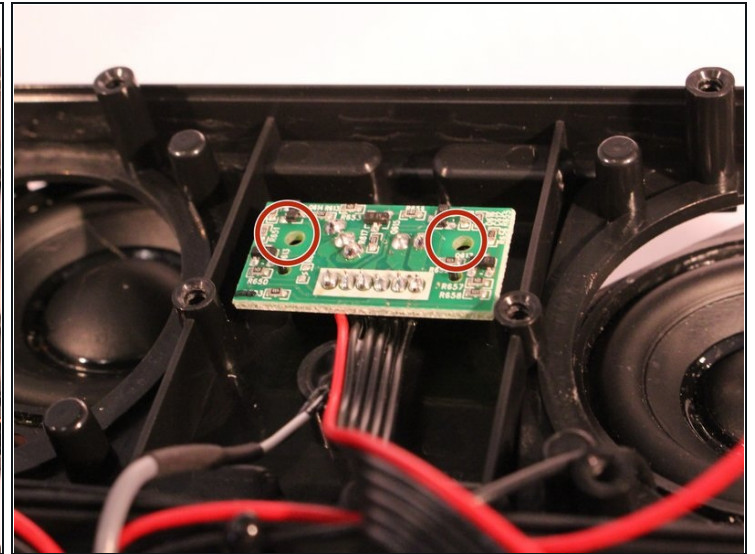
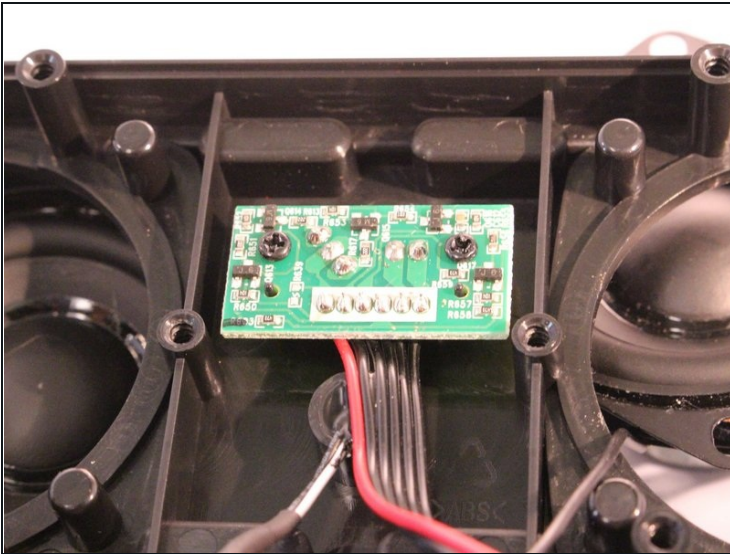
- Unplug and disconnect the battery from the motherboard.

Step 10



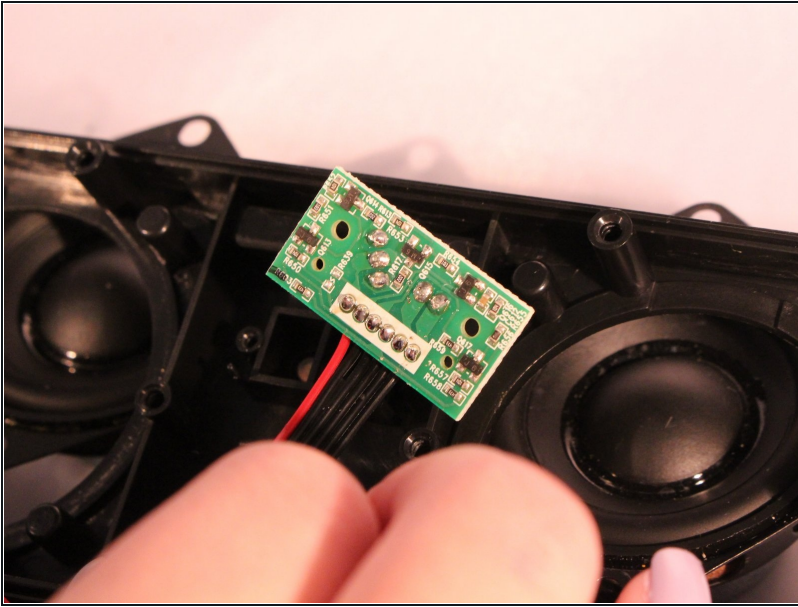
- Using a size PH1 screwdriver, remove the two screws.

Step 11



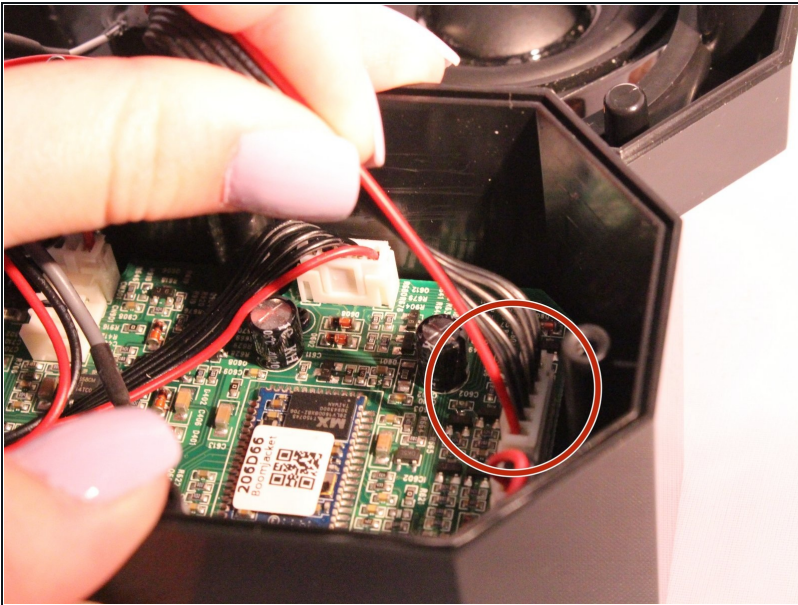
- You will now see the motherboard for the power button.
- Remove the 2 screws holding the motherboard into place.

Step 12



- Pick up the motherboard and take it out of the slot.

Step 13



- Disconnect the power button motherboard from the speaker motherboard.

To reassemble your device, follow these instructions in reverse order.