



# Panasonic Lumix DMC-FX07 Top Cover Replacement

Bring the top of your camera back to its beautiful self.

Written By: Karissa



---

## INTRODUCTION

This guide will show you how to remove the top cover of your camera so you can replace it.

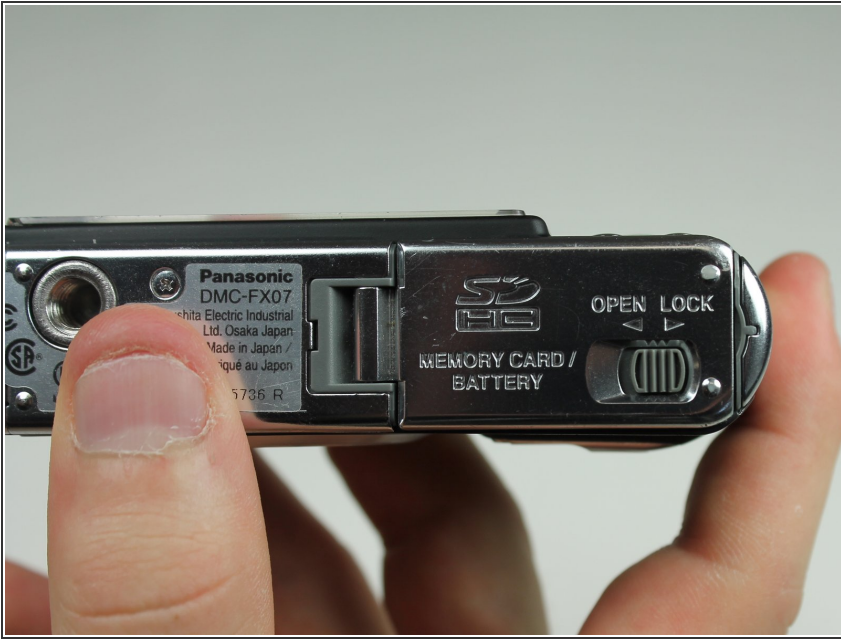
---



### TOOLS:

- [Phillips #00 Screwdriver](#) (1)
  - [Spudger](#) (1)
-

## Step 1 — Battery



- Move the switch on the battery door to the Open position.
- ❗ The door will automatically swing open after you let it go.

## Step 2



- Push the small gray tab on the top right corner to the left. The battery will pop out slightly.
- Keep your finger clear of the battery when it pops out.

### Step 3 — Memory Card



- Push the memory card in and let go.
- ❗ The memory card will pop out slightly.
- Pull out the memory card.

### Step 4 — Back Cover



- Unscrew the small screws on the sides of the camera.
- ❗ The screws on the left side(#00P, 4.7mm) are longer than the screw on the right side(#00P, 3.3mm).



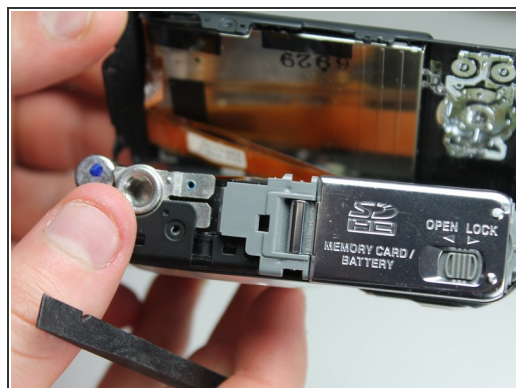
## Step 5



- Unscrew the three small screws on the bottom(#00P, 3.3mm).

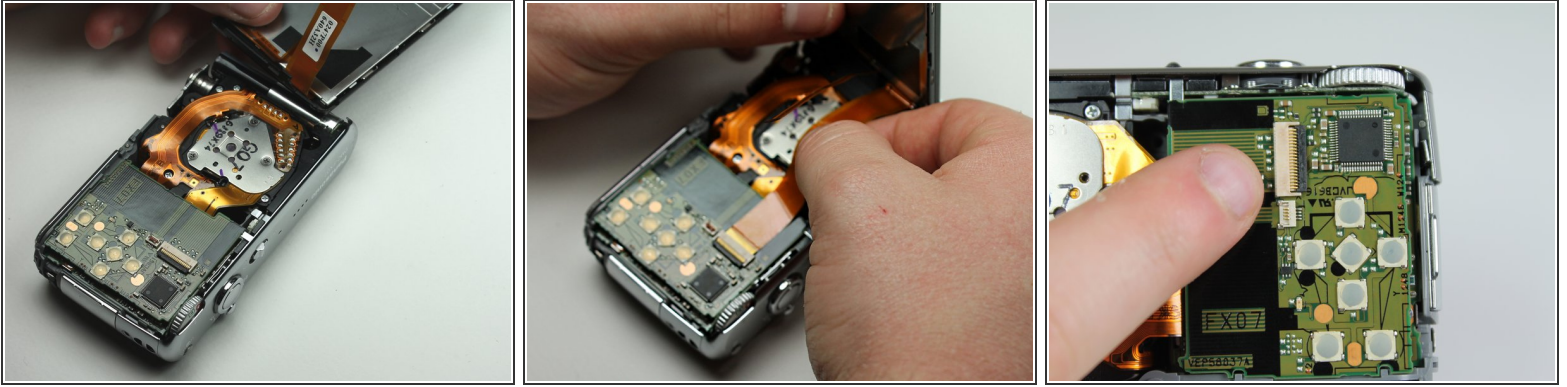
**i** The bottom will fall off.

## Step 6



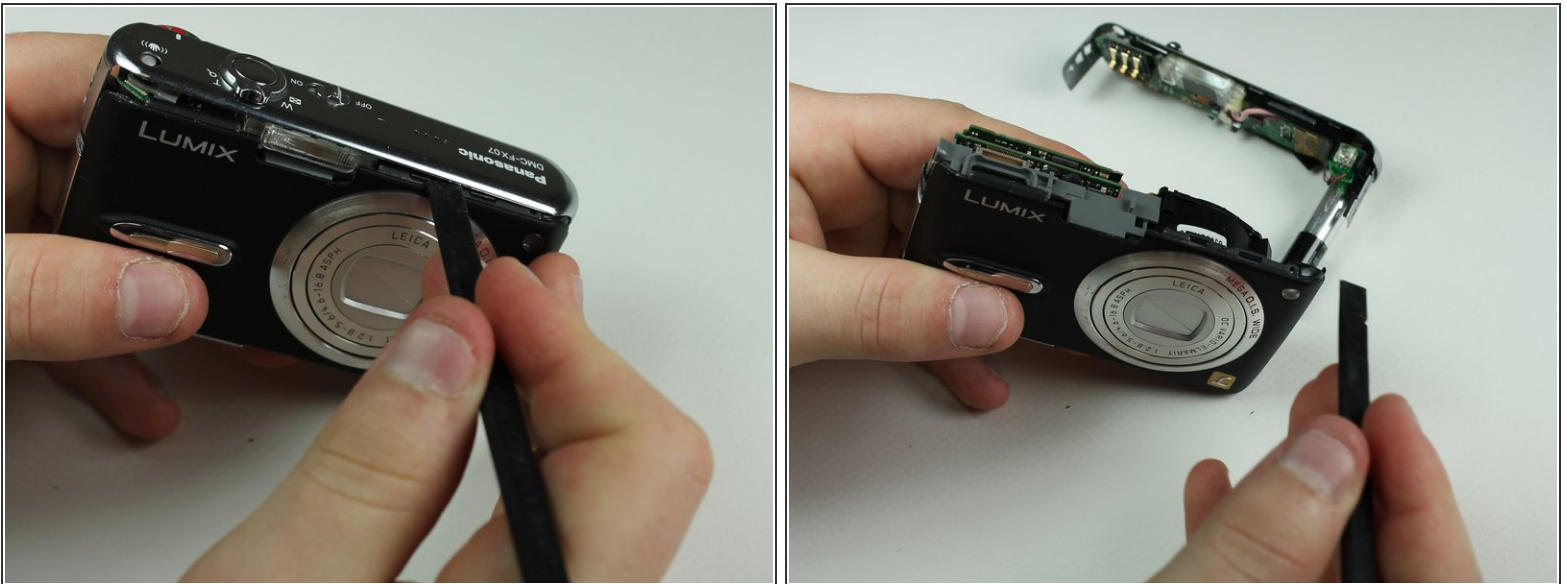
- Lift up the bottom back cover by prying the bottom edge with the spudger.
- Gently lift up the back cover with your hand from the bottom to the top.

## Step 7



- Lift the tabs on the ZIF connectors.
- The ribbon cables should easily come out of the ZIF connectors.

## Step 8 — Top Cover



- Using the spudger, pry off the top cover by gliding the spudger along the entire edge between the top cover and the front cover.

⚠ Be careful not to damage the cylindrical capacitor on the circuit board under the top cover.

To reassemble your device, follow these instructions in reverse order.