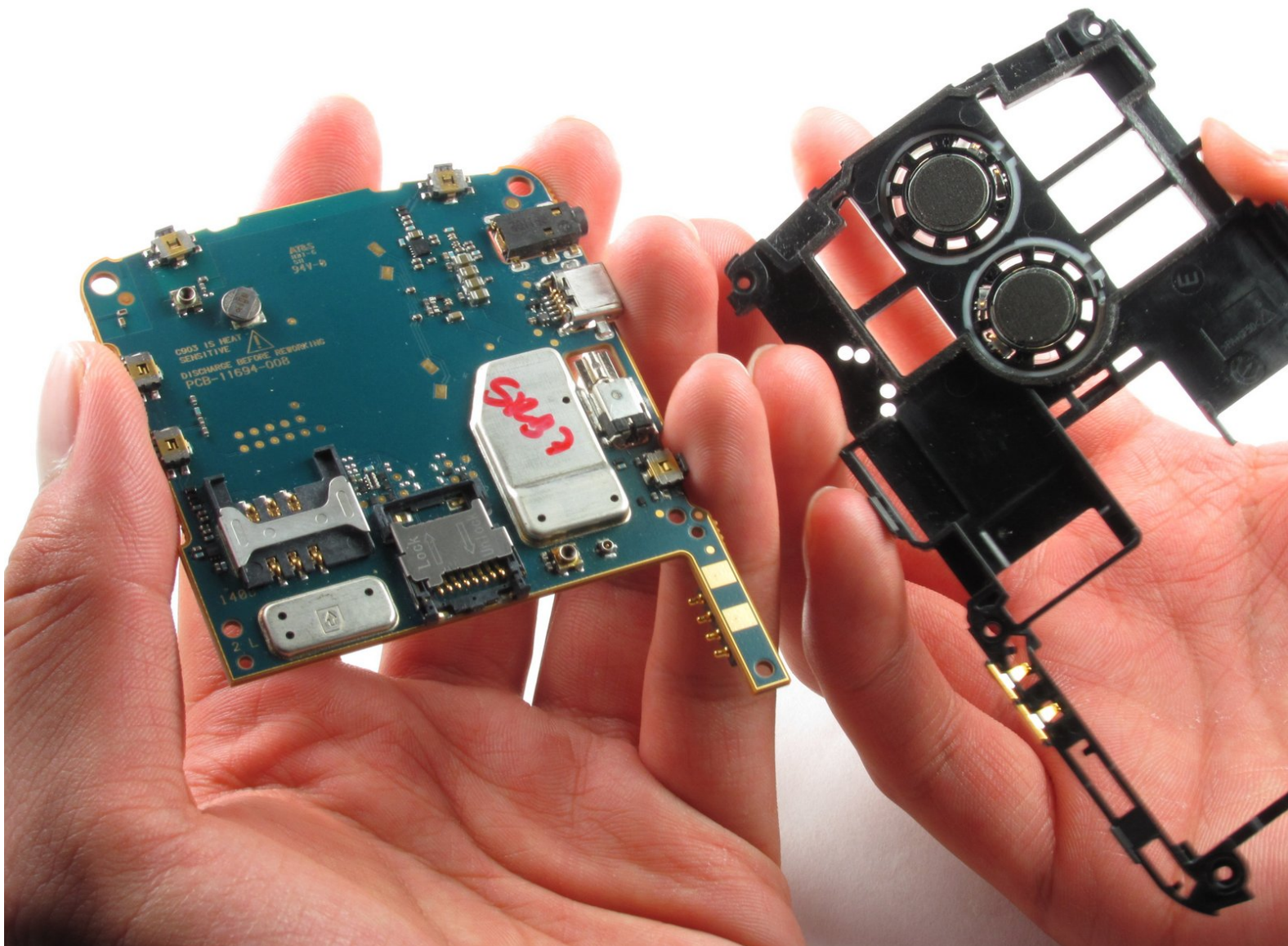




# BlackBerry World Edition 8830 Motherboard Replacement

Use this installation guide for the motherboard of the BlackBerry 8830 World Edition.

Written By: Martha de Maria y Campos





## TOOLS:

- [Tweezers](#) (1)
- [iFixit Opening Tools](#) (1)
- [T4 Torx Screwdriver](#) (1)

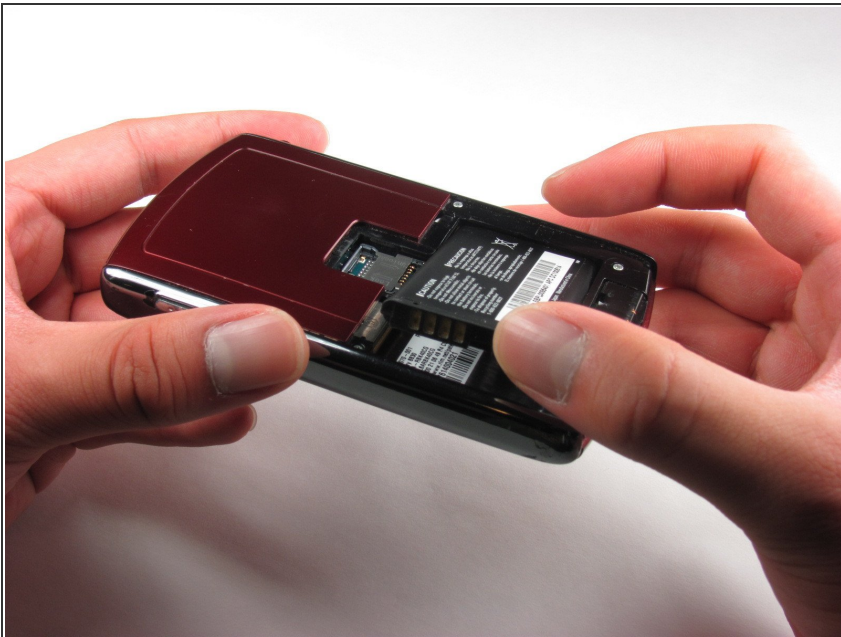
## Step 1 — Battery



✦ Before beginning this installation, make sure phone is powered off .

- Turn phone over to the backside.
- Press down on the lower portion of the back cover.
- Slide the lower portion down to remove the cover and reveal the battery.

## Step 2



- Remove the battery from the phone.



## Step 3 — Front and Back Casing



- Once the battery is removed, remove the four 9.2 mm screws with the T4 Torx Screwdriver.

## Step 4



- Remove side panels with the Plastic Opening Tool by sliding it along the edge of the panel until you can pry it off with the tool.

## Step 5



- Remove the back casing using the Plastic Opening Tool
- ⓘ Once the back casing is removed the top two buttons are likely to pop out.

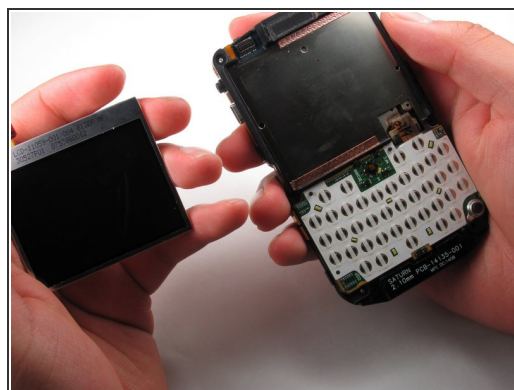
## Step 6



- Locate the two 9.2mm screws on the upper inside casing
- Remove them using the T4 Torx Screwdriver
- Slide off the front casing once the screws are removed.
- ⚠ Trackball will fall out once the casing is removed.



## Step 7 — LCD Screen



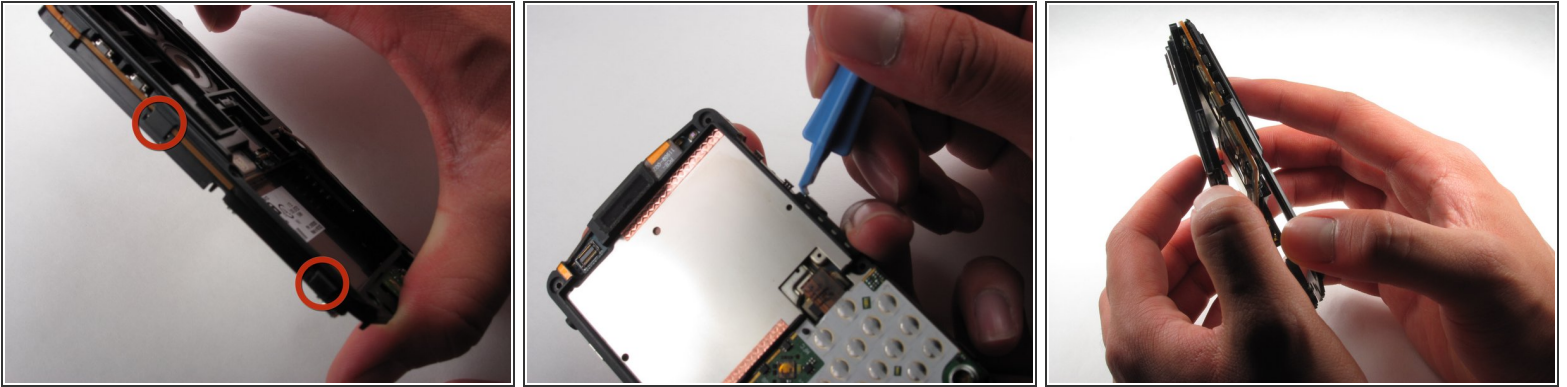
- Disconnect the tab attached to the interior casing from the LCD Screen by gently pulling the tab up and away from the phone.
- Use the Plastic Opening Tool to pry the LCD Screen out.

## Step 8 — Motherboard



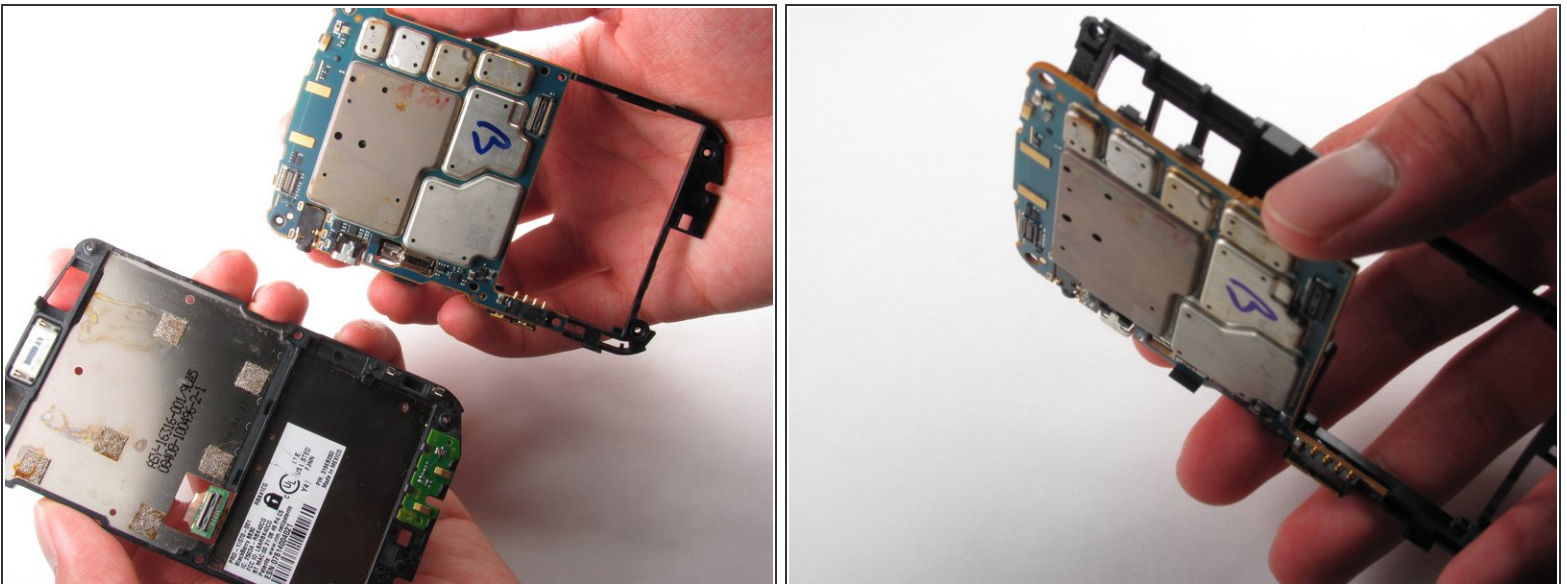
- Grab and remove the middle bar located on the bottom of the phone.
- Once the bar is removed, a small wire will be revealed. Remove the wire using your tweezers.
  - There are two places that wire is clipped in. To disconnect the wire, gently pull up on the wire until it pops off of the connector.

## Step 9



- Once the wire is removed, locate the six clips located along the phones edges. There are two on each side, and two on the top.
- Carefully unhook the clips by hand or with the plastic opening tool to allow the back cover to come off.

## Step 10



- With the motherboard revealed, slowly lift it off of the casing.

To reassemble your device, follow these instructions in reverse order.