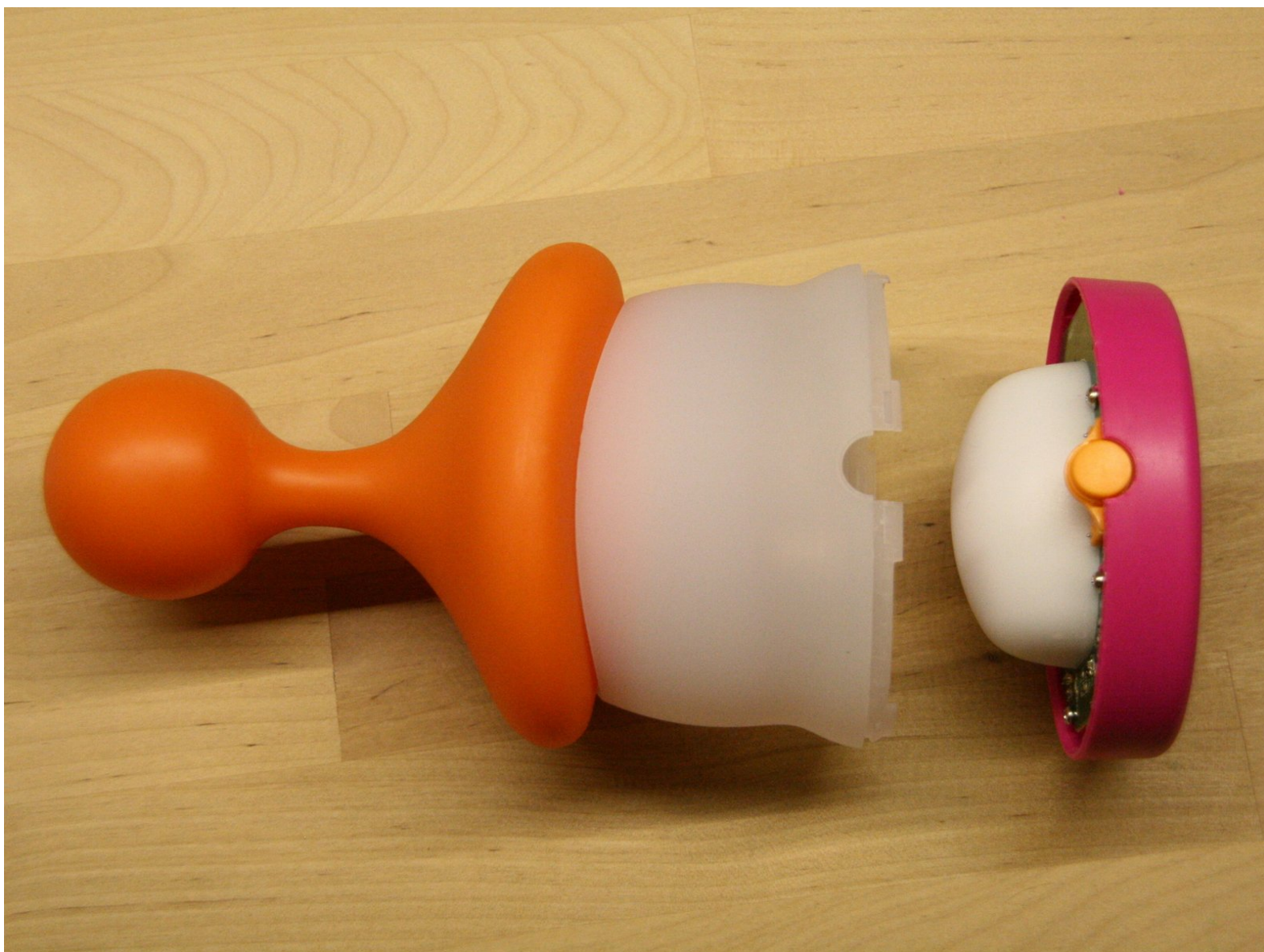




# Disassembling Beaba Lutin night lamp

How to open it for repairs or battery swap

Written By: petur



---

# INTRODUCTION

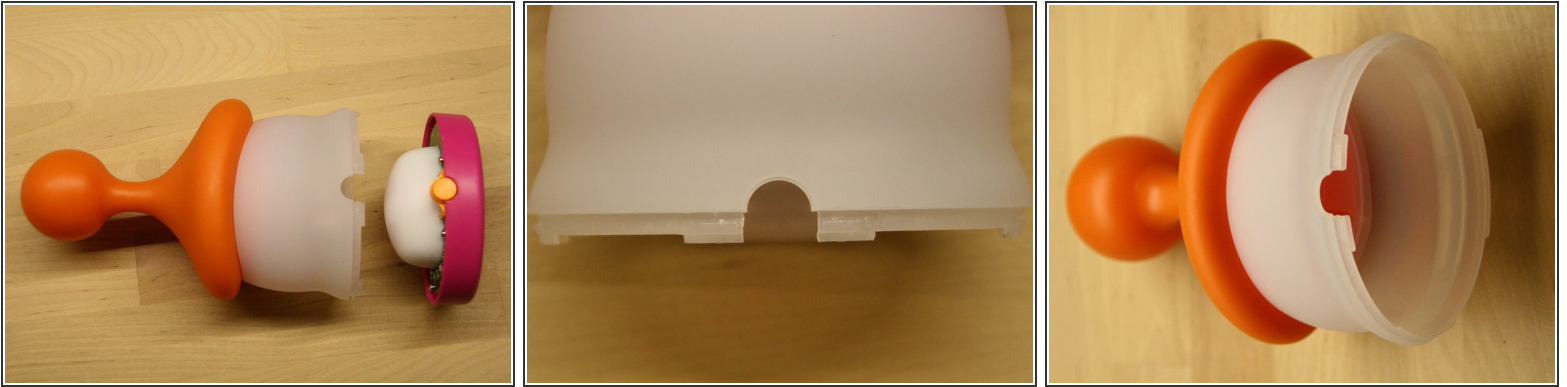
How to open it for repairs or battery swap



## TOOLS:

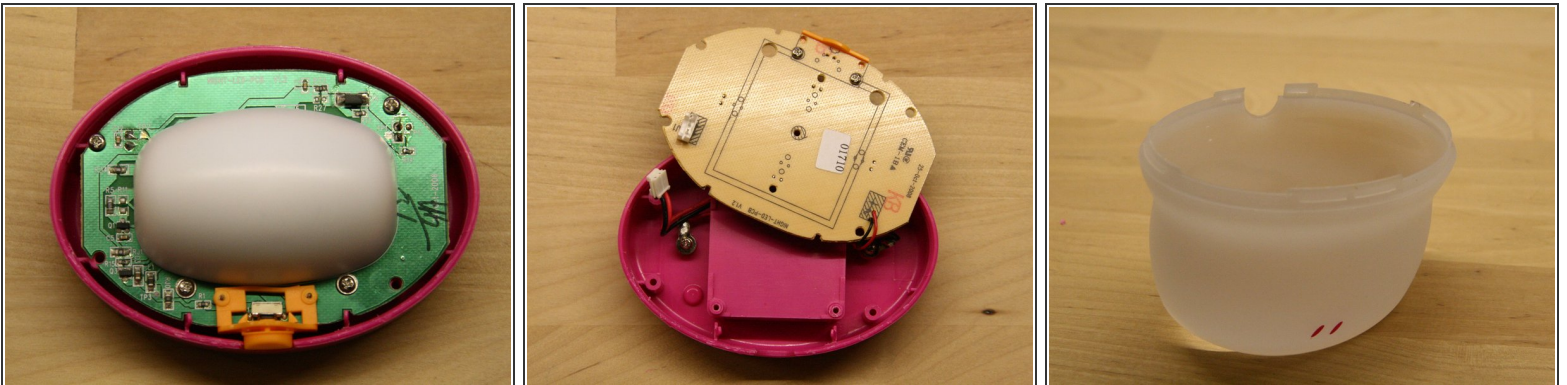
- [Phillips #00 Screwdriver](#) (1)
-

## Step 1 — Disassembling Beaba Lutin night lamp



- The lamp opens up at the base: there are two smaller tabs next to the button, the semi-transparent plastic can be pressed in a bit with a knife, put a bit of paper inbetween to prevent the clip from snapping back. Next go with a knife towards one of the large tabs on the side until one side snaps out. Repeat for other side.

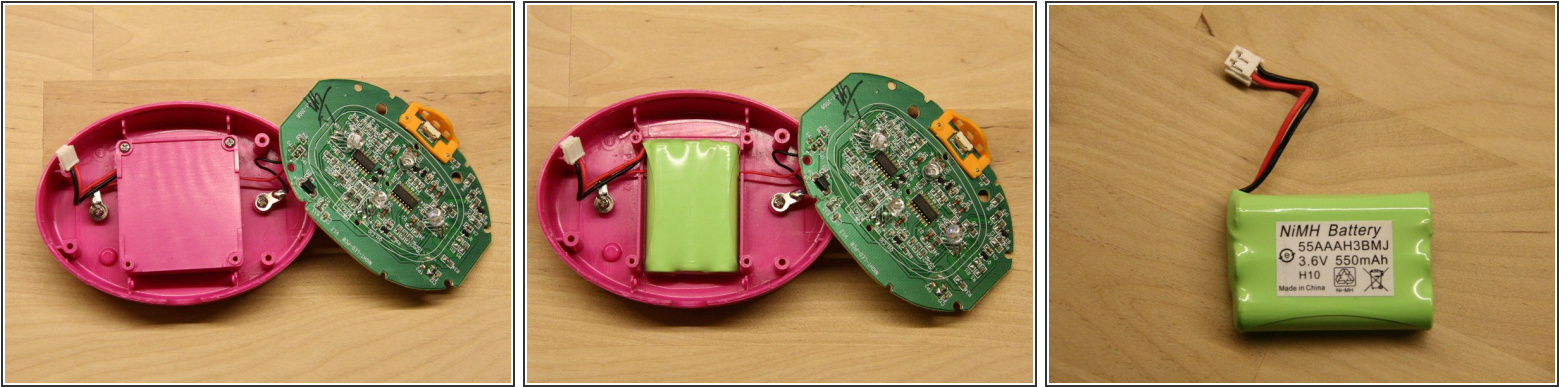
## Step 2



- Remove the 4 screws (warning: 2x2 different types), out comes the pcb. Detach battery connector at the back.



### Step 3



- remove two more screws to get at the battery

## Step 4



- Overview of parts

To reassemble your device, follow these instructions in reverse order.