



# Samsung S630 LCD Display Replacement

This will show how to replace the LCD on a Samsung S630 digital camera

Written By: oldturkey03



## INTRODUCTION

This will show how to change a broken display. The display is readily available at many different sources and should cost no more than \$15. The repair is quick and does not require any special skills, like soldering etc.



### TOOLS:

- [Phillips #00 Screwdriver](#) (1)
- [iFixit Opening Tools](#) (1)



### PARTS:

- [Replacement LCD Part #Q0704014101A](#) (1)

## Step 1 — LCD Display



- Here is my Samsung S630. Nice little camera with just one flaw. The LCD display was broken.

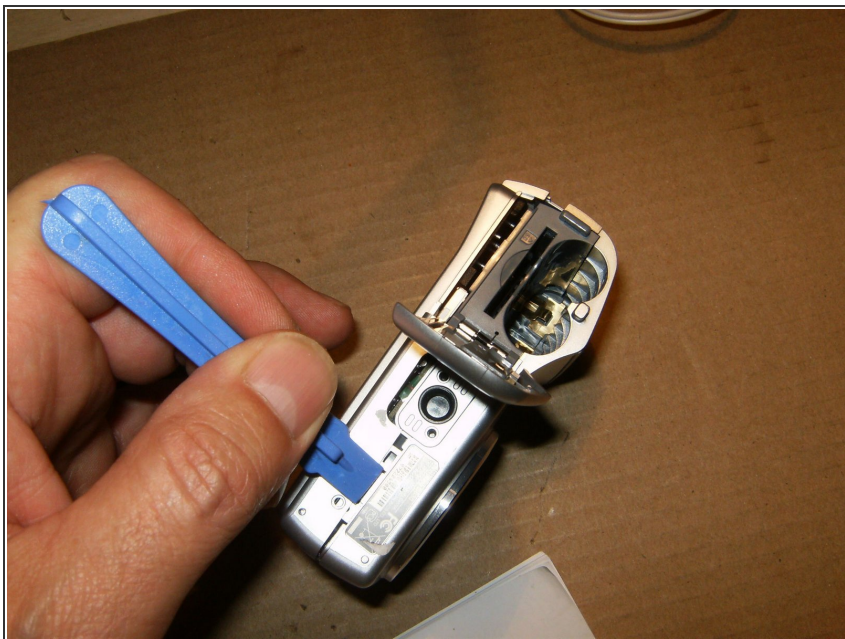
## Step 2



- Remove the two screws on the left side.
- Remove the two on the right side.
- Remove the four screws on the bottom. All eight screws are the same, so no need to ensure proper position when reassembling.

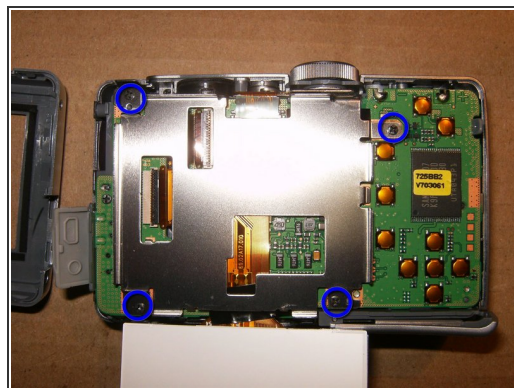
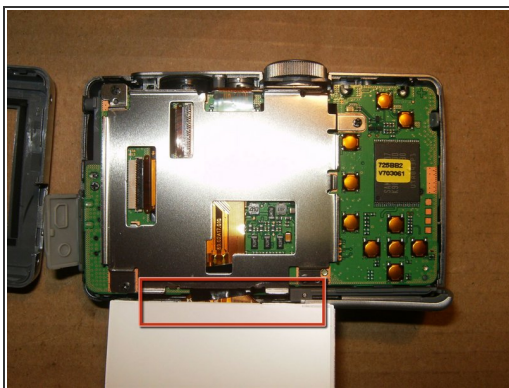


## Step 3



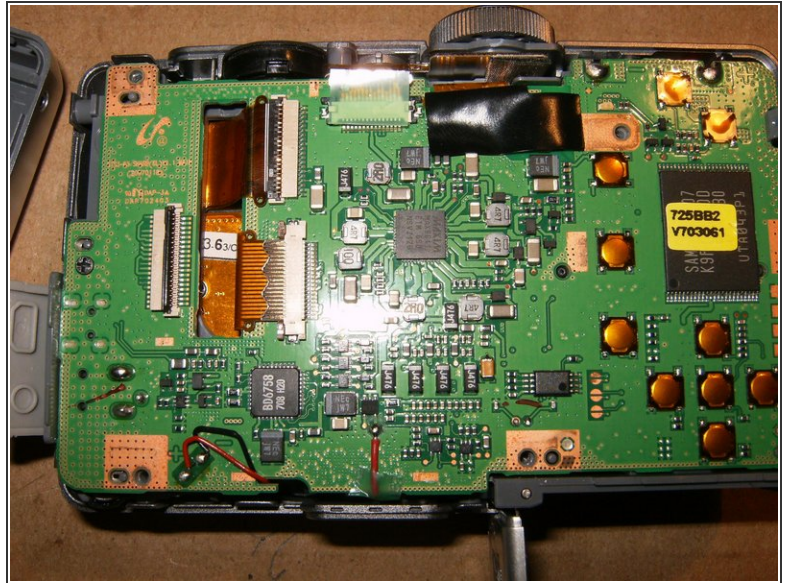
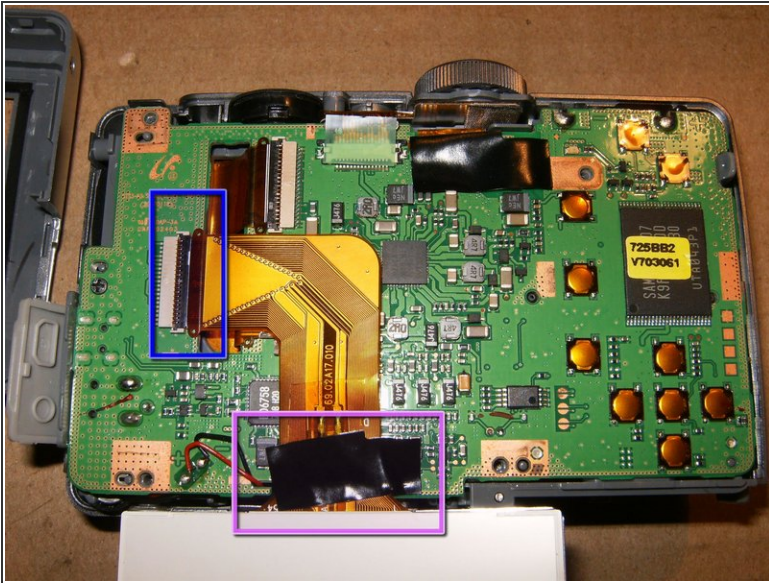
- Open the battery cover and split the housing carefully. Start at the battery compartment and work your way around it. You can use an opening tool or your fingernails. Also make sure to open the USB port cover.

## Step 4



- You now look directly onto the LCD.
- Gently move the LCD out of the frame and fold it toward the bottom of the camera. Do not try to remove it. It is still attached.
- Remove the four screws that hold the frame to the logic board.

## Step 5



- This particular camera has some Kapton tape holding the cable to the logic board. Gently remove it from the board only.
- Open the locking tab on the PCB connector and remove the cable. This will separate the LCD from the board.
- This is what the logic board looks like without the frame and the LCD.

To reassemble your device, follow these instructions in reverse order.