



# Caribou Coffee CC-EKV8SS7 Base

## Disassembly

Many of the CC-EKV8SS7 replacement guides require that the bottom of the base be removed. This guide will demonstrate the steps necessary to do so.

Written By: Lucas Baesler



---

## INTRODUCTION

Many of the CC-EKV8SS7 replacement guides require that the bottom of the base be removed. This guide will demonstrate the steps necessary to do so.

---




### TOOLS:

- [Tri-point Y0 Screwdriver](#) (1)
  - [iFixit Opening Tools](#) (1)
  - [Metal Spudger](#) (1)
-

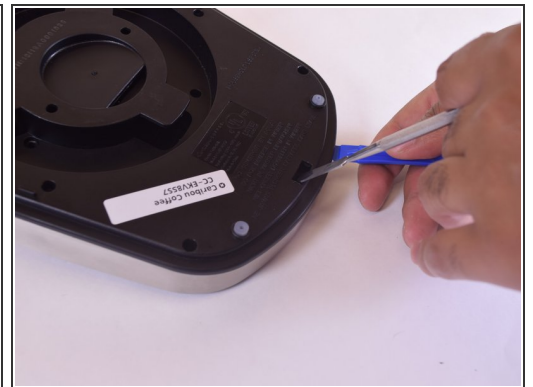
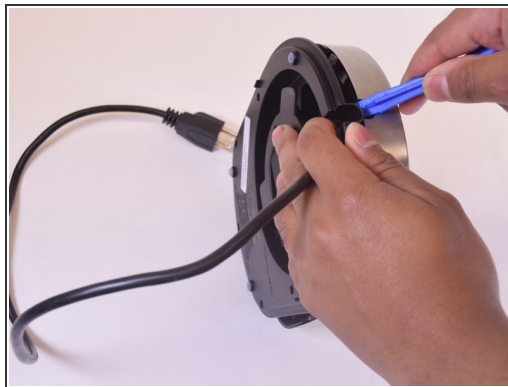
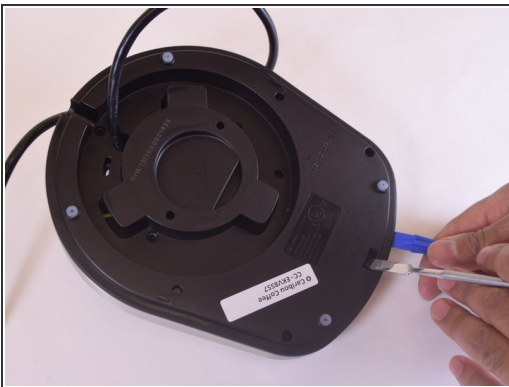
## Step 1 — Caribou Coffee CC-EKV8SS7 Base Disassembly



 Unplug the unit before disassembling to avoid electrocution.

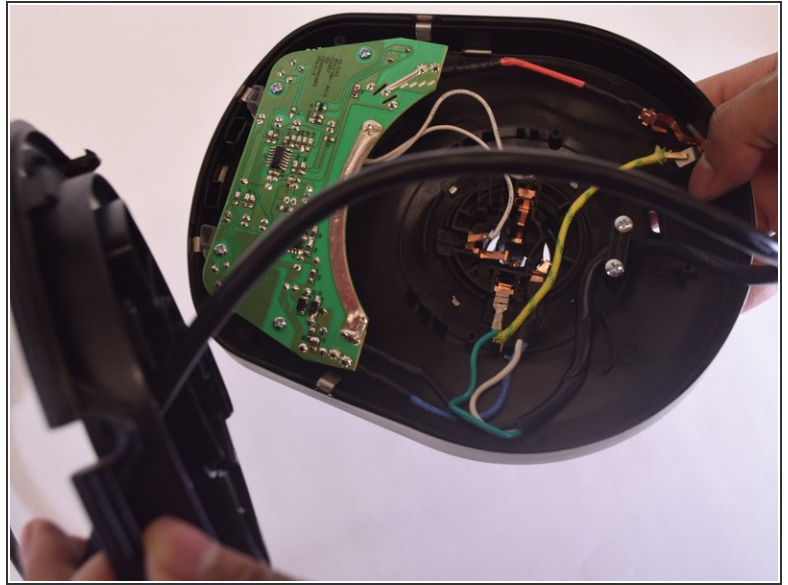
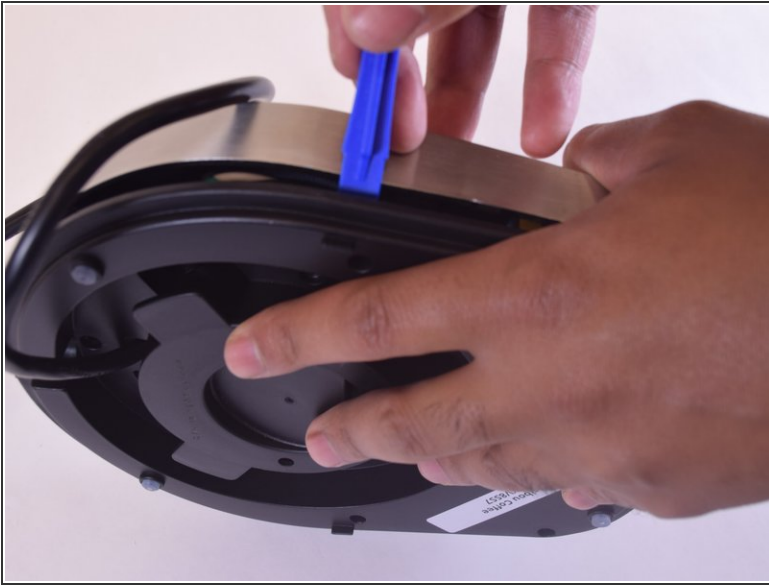
- Remove the five (10mm) Y screws from the bottom of the base. Three are in a triangle around the center and two are on the corners of the flat edge.

## Step 2



- Now you will need to 'unlock' the top and bottom of the base from each other. On the flat edge, there is a rectangle inset with one side cut out. Insert a metal spudger about 1/2" in to the opening to toggle open an interior tab.
- With the metal tool still inserted, use an opening tool between the black and silver sides to pry the base open.

### Step 3



- Once you have the halves opened at least 1/4", remove the metal key and rotate the base a quarter turn in any direction.
- Continue using the spudger to pry open the base at each quarter turn until the sides separate easily.
- ⓘ The black bottom will catch on the power cord plug, to prevent total dismantlement.

To reassemble your device, follow these instructions in reverse order.