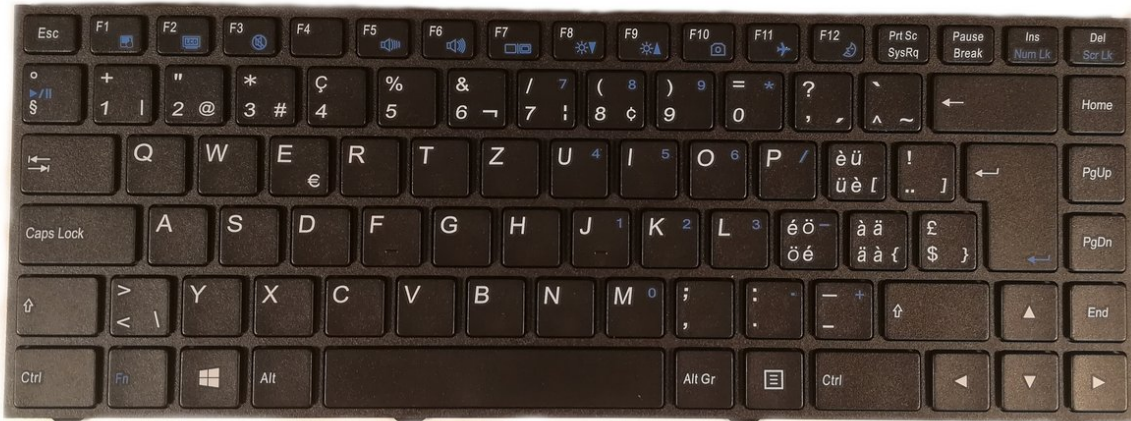




why! N240BU Keyboard Replacement

Written By: Felice Suglia





TOOLS:

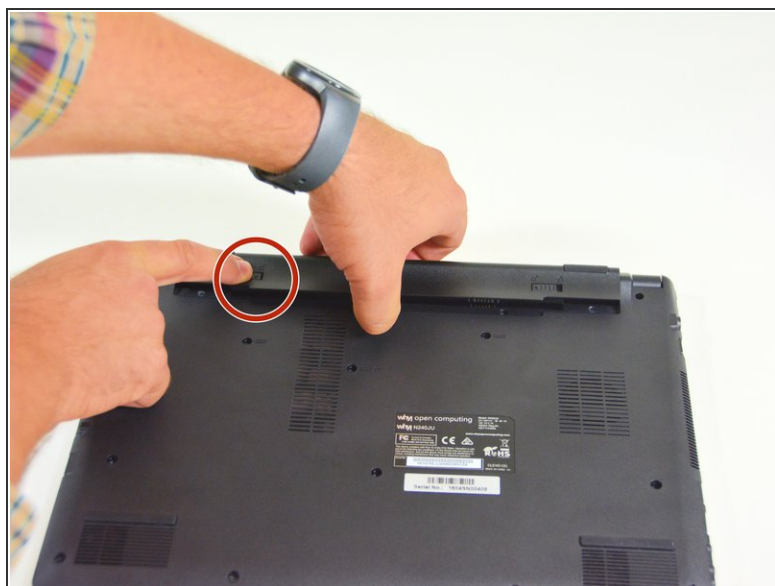
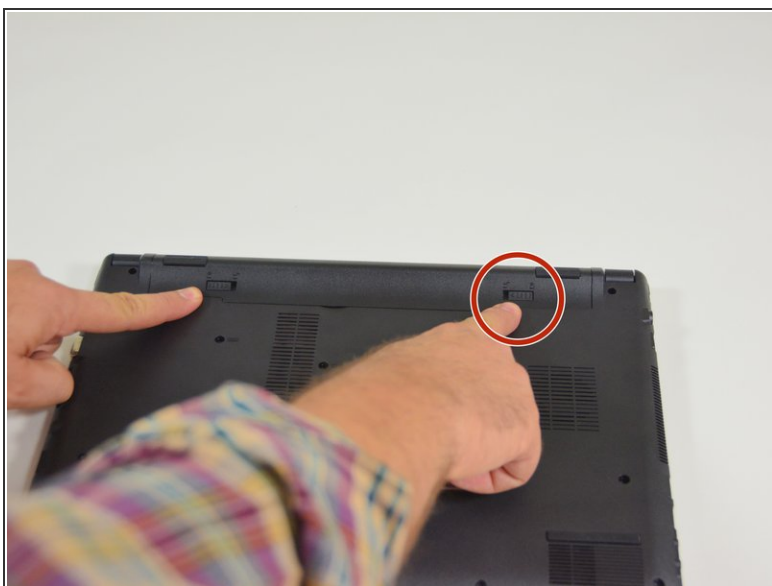
- [Tournevis Cruciforme PH1](#) (1)



PARTS:

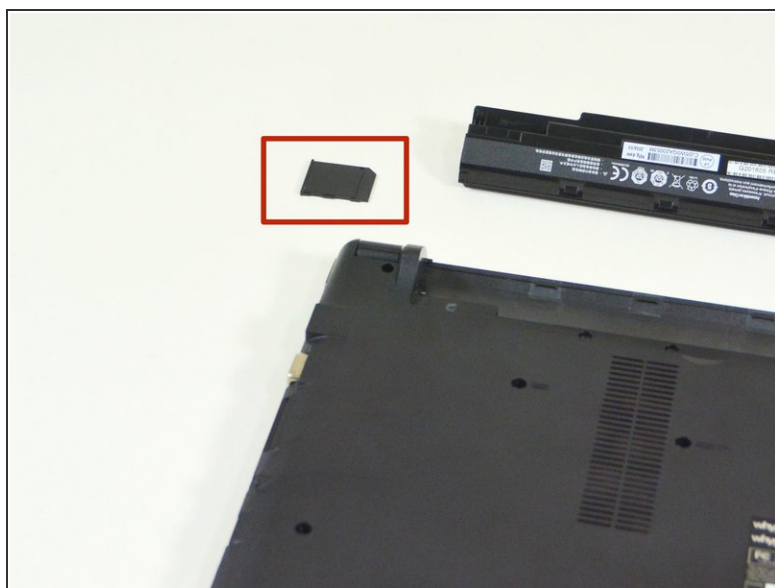
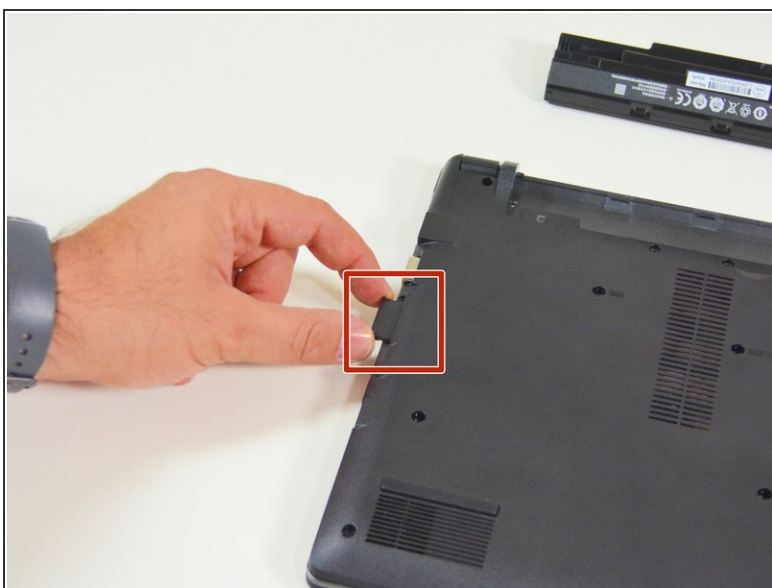
- [New Item](#) (1)
- [New Item](#) (1)
- [New Item](#) (1)
- [New Item](#) (1)
- [New Item](#) (1)
- [New Item](#) (1)

Step 1 — Battery



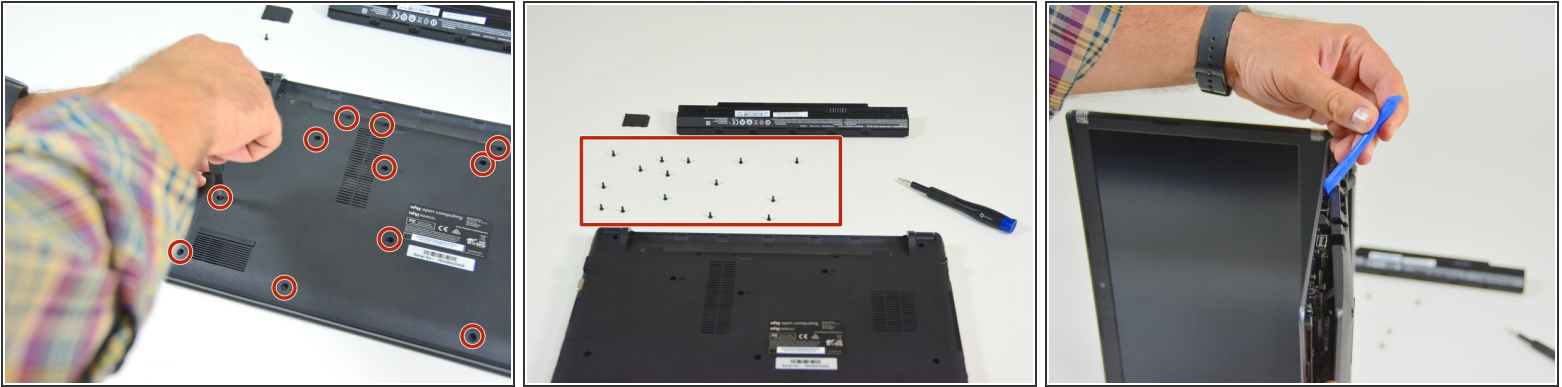
- Start by unlocking the right locking latch.
- Then, by simultaneously unlocking the left latch, lift the battery out of its socket.

Step 2 — Access to main components



- Begin by spotting the dummy memory card.
- Then, remove it and put it on your workplan.

Step 3



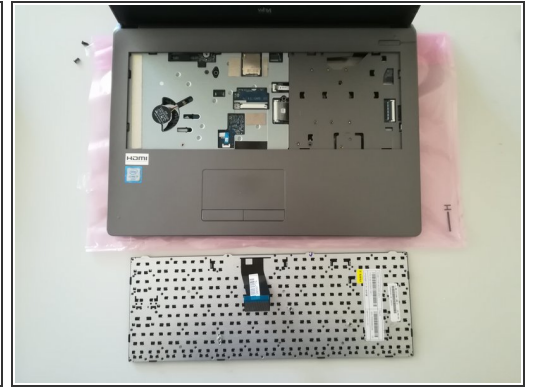
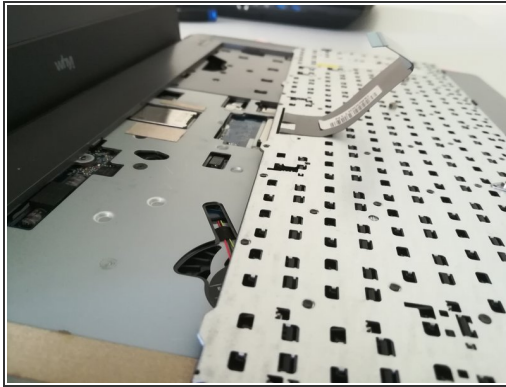
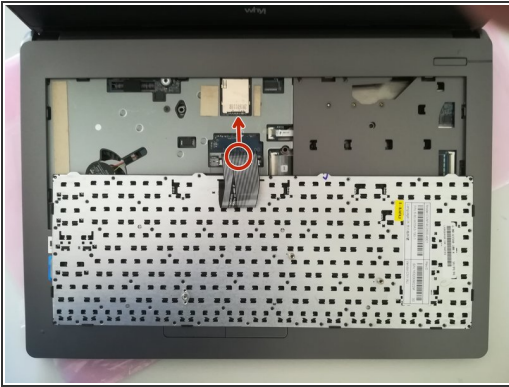
- Locate the 15 screws that hold the bottom cover of the device in place.
- Unscrew them and place them on your work surface.
- Then, un-clip the bottom cover, starting with the side shown in the third picture.

Step 4 — The keyboard



- Unscrew the circled screws in green and red
- Put the computer in the position of the second image while pushing a paper clip into the hole of the screw circled in green until you hear a click
- Lift the keyboard

Step 5



- Disconnect the connector circled in red in the direction of the arrow

To reassemble your device, follow these instructions in reverse order.