



why! N240BU CMOS Battery Replacement

Written By: Felice Suglia



TOOLS:

Tournevis Cruciforme PH1 (1)

PARTS:

Pièces pour why! N240BU CH (1)

Pièces pour why! N240BU EU (1)

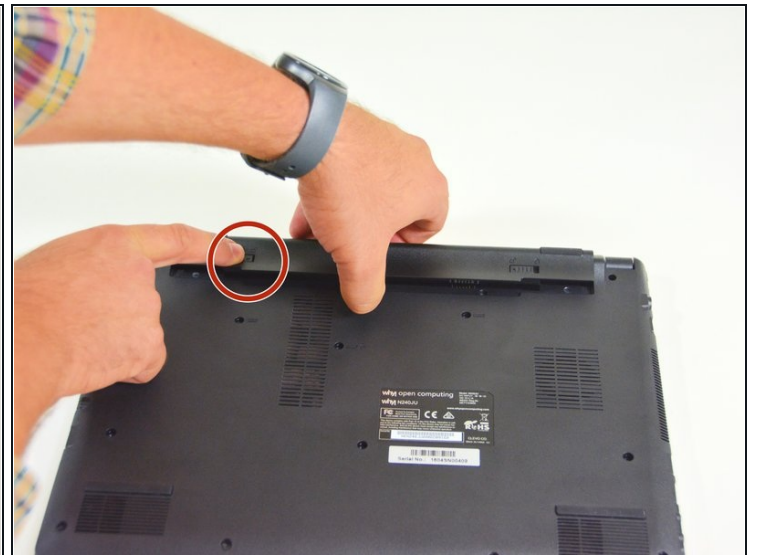
Pièces pour why! N240BU-PRO CH (1)

Pièces pour why! N240BU-PRO EU (1)

Pièces pour why! N240WU CH (1)

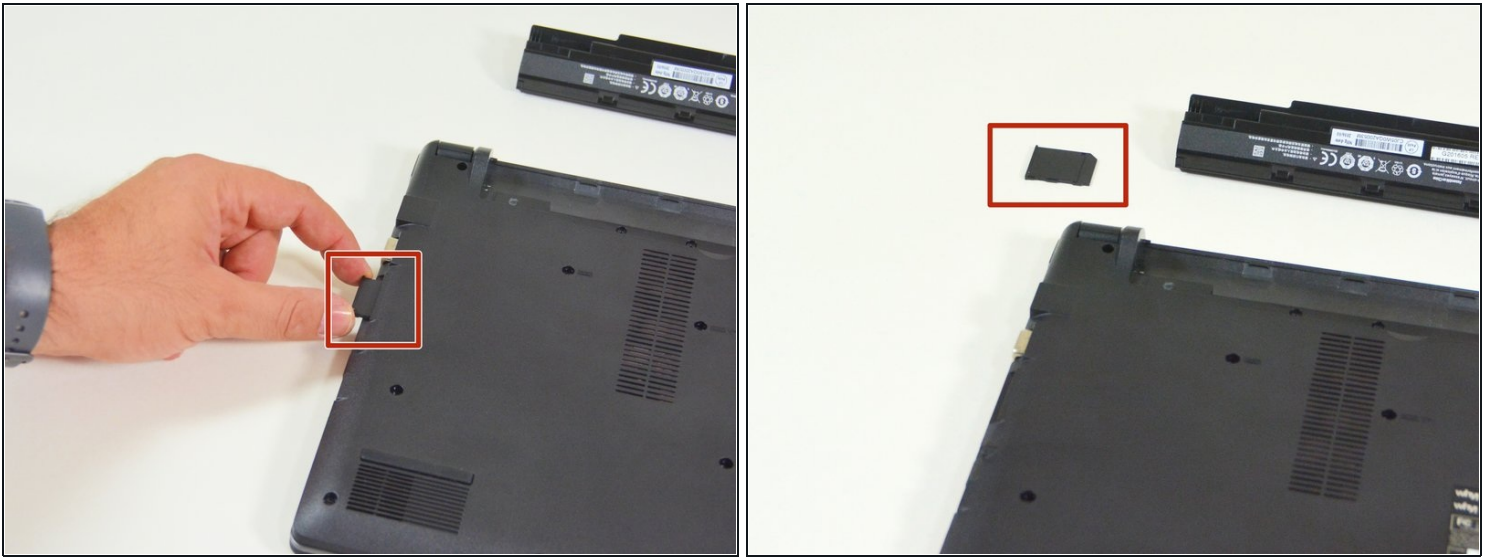
Pièces pour why! N240WU EU (1)

Step 1 — Battery



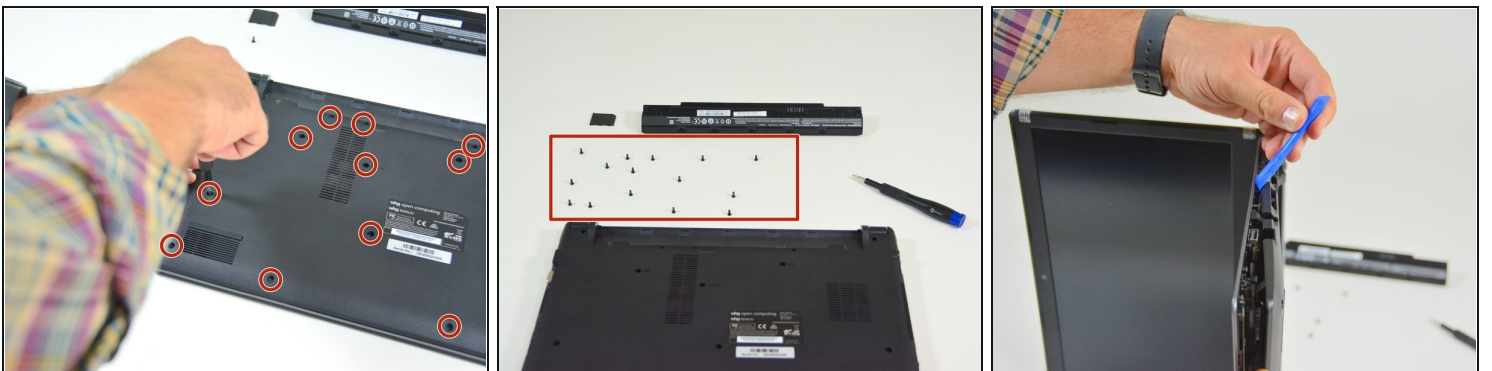
- Start by unlocking the right locking latch.
- Then, by simultaneously unlocking the left latch, lift the battery out of its socket.

Step 2 — Access to main components



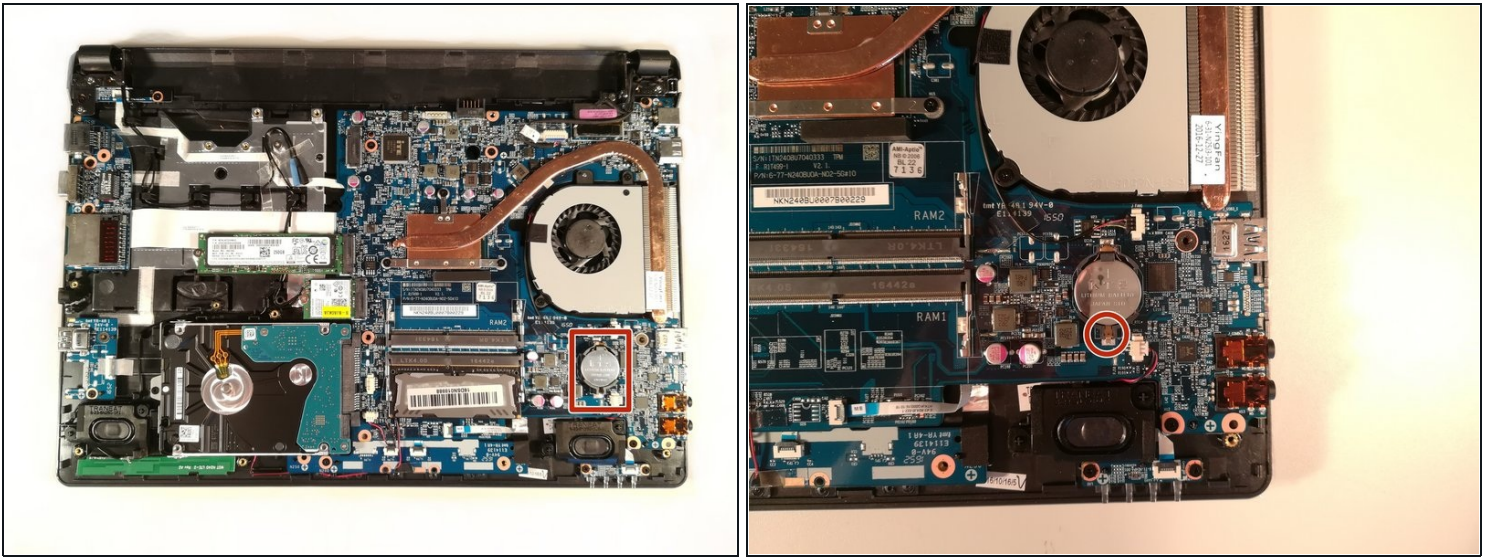
- Begin by spotting the dummy memory card.
- Then, remove it and put it on your workplan.

Step 3



- Locate the 15 screws that hold the bottom cover of the device in place.
- Unscrew them and place them on your work surface.
- Then, un-clip the bottom cover, starting with the side shown in the third picture.

Step 4 — CMOS Battery



- Press with a screwdriver in the red circled area to spread the base of the battery
- Remove the battery by holding the screwdriver down

To reassemble your device follow the following instructions in reverse order