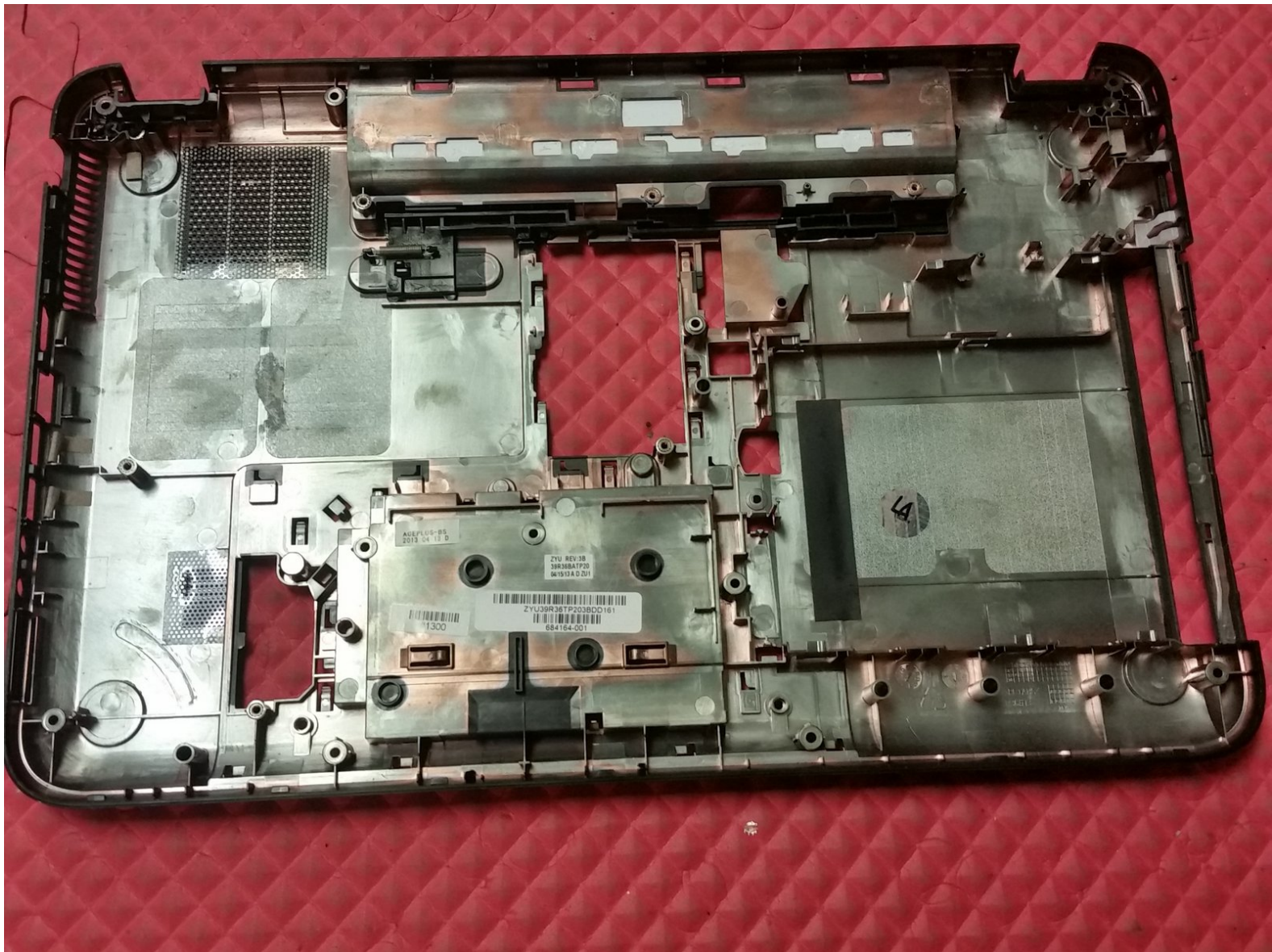




HP Pavilion g6 Base Replacement

This guide teaches you how to replace the base in an HP Pavilion g6.

Written By: Joseph Sctbunio

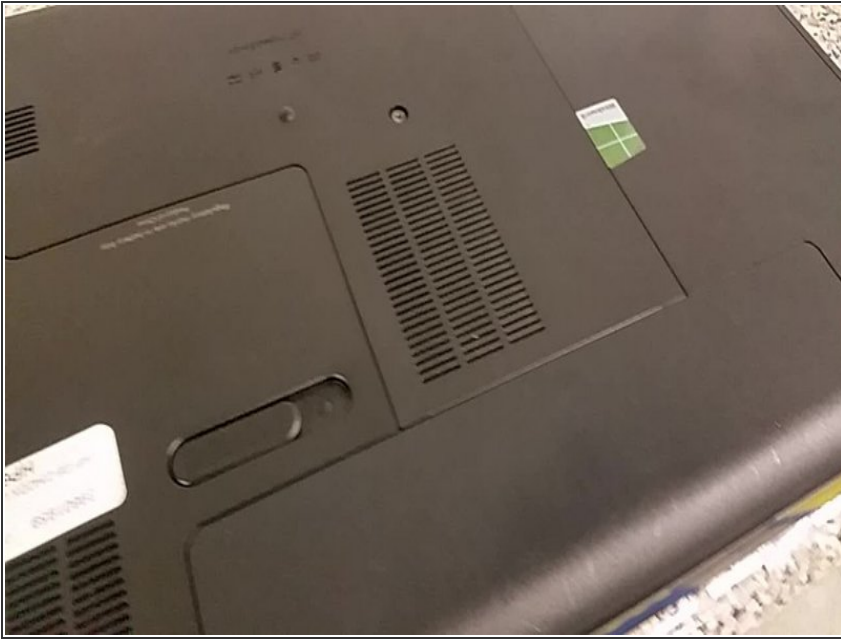




TOOLS:

- [Essential Electronics Toolkit \(1\)](#)
-

Step 1 — Remove battery



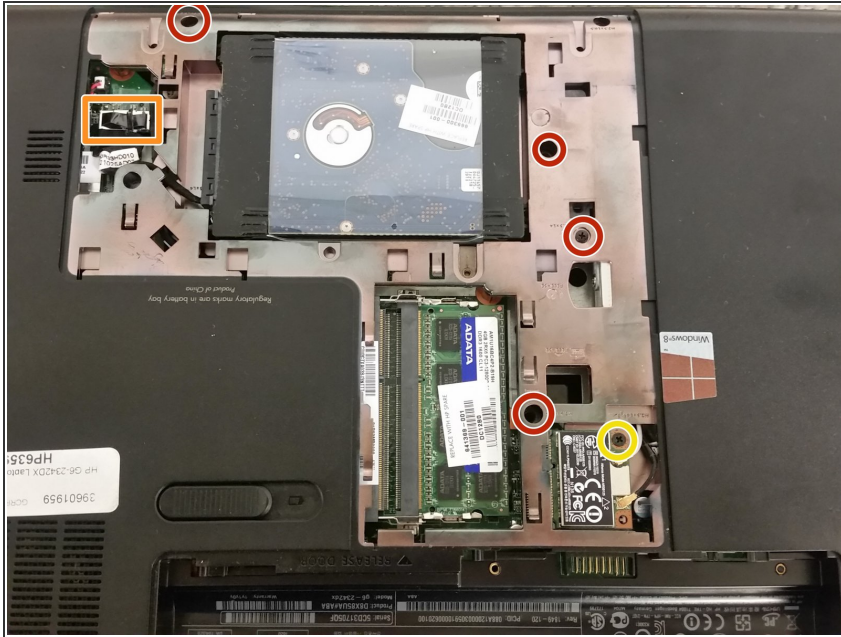
- Simply slide the lever to the opposite position, and then the battery will rise upward. Grab it and pull it out.

Step 2 — Remove palmrest screws & bottom cover



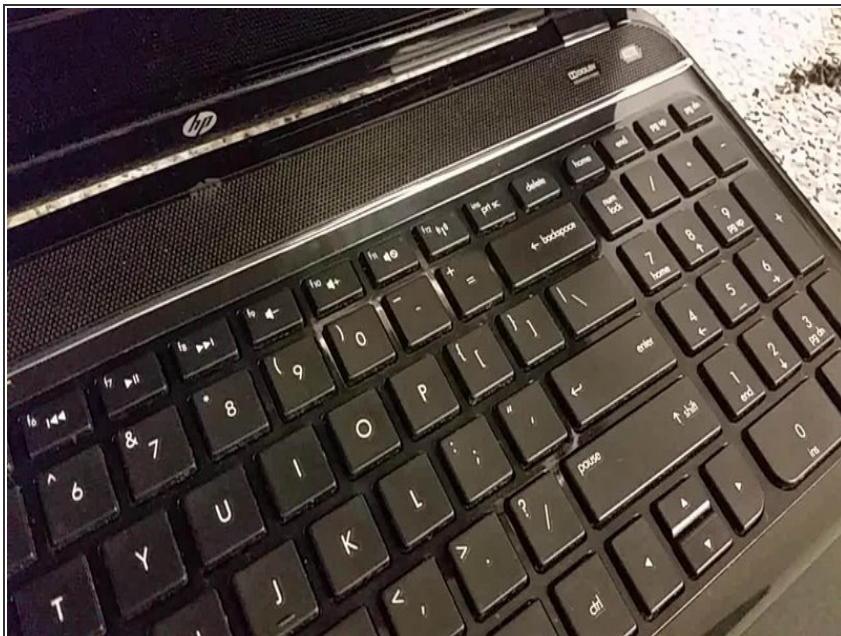
- Remove the five M2.5xL6.5 palmrest screws...
- ...as well as the captive bottom cover screw. Slide the bottom cover away from you and pull it up.

Step 3 — Remove more screws & hard drive



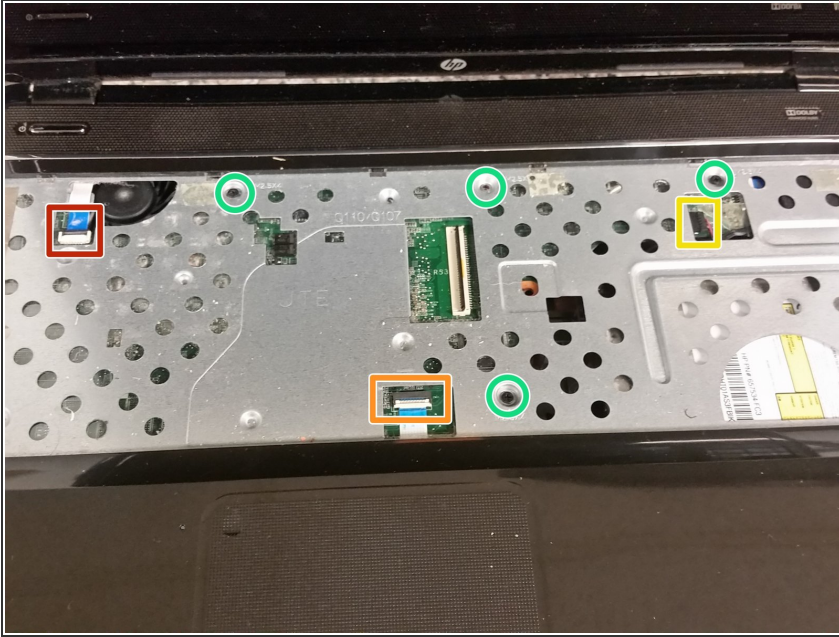
- Remove the four M2.5xL6.5 screws securing the keyboard, disc drive, and palmrest.
- Pull upwards on the hard drive connector, and remove the hard drive.
- Remove the two M2.5xL4 screws revealed by removing the hard drive.
- Remove the single small screw holding the wireless card, and undo the antenna connections.

Step 4 — Remove keyboard & connector



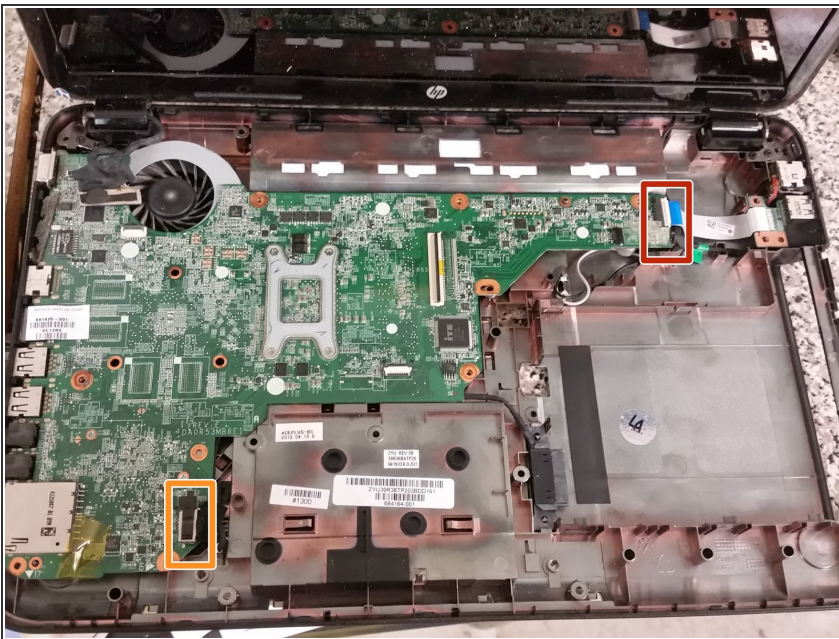
- Use your fingernails to get between the palmrest and the keyboard, and pry the keyboard out.
- Unlock the connector underneath the keyboard, and remove the cable from the connector.

Step 5 — Remove palmrest cables & screws



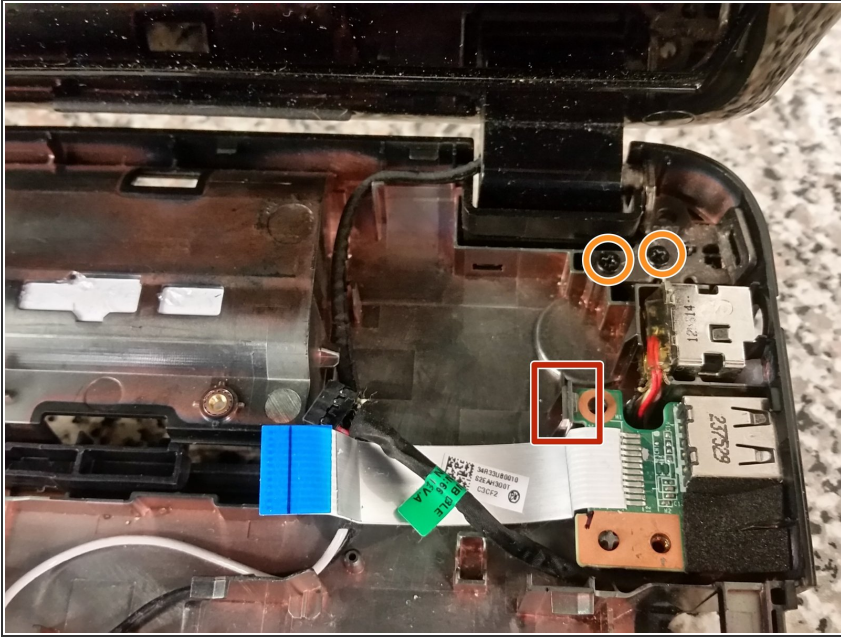
- Undo the lock of the power button cable, and pull the cable out.
- Repeat the process for the touchpad cable...
- ...as well as the speaker cable.
- Remove the three M2.5x4 screws securing the palmrest.

Step 6 — Undo cables



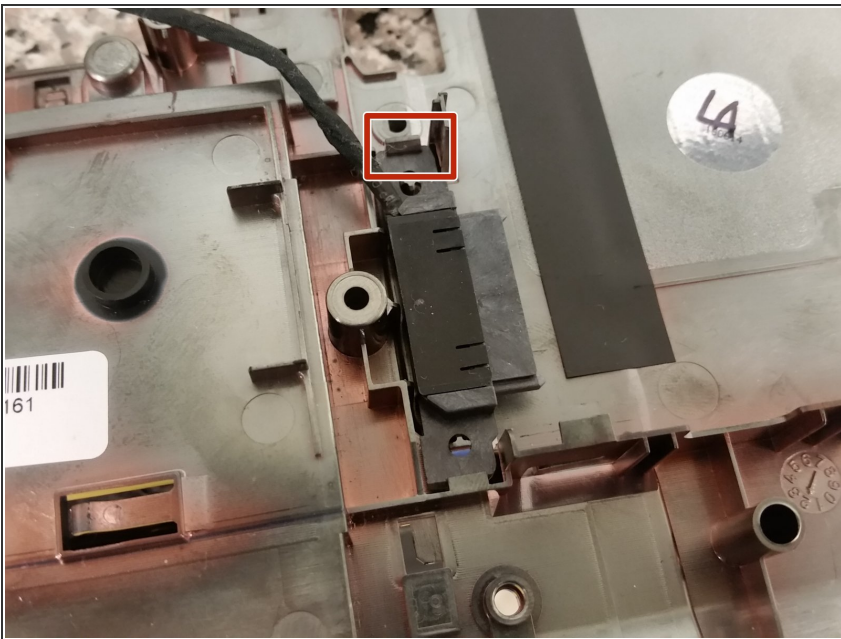
- Undo the lock for the USB port connector, and pull the cable out. Also pull on the power jack connector right beside it.
- Pull up on the optical drive connector.
- At this point, the motherboard should simply lift upwards.

Step 7 — Remove LCD assembly, DC Jack & USB Board



- Pull the clip for the USB board to the left, and pull up on the USB board.
- Pull up on the DC jack.
- Remove the two M2.5xL6.5 screws securing the right hinge to the base. Do the same for the left side.

Step 8 — Remove optical drive connector



- Pull on the clip for the optical drive connector, and then pull the connector out.

To reassemble your device, follow these instructions in reverse order.