



Samsung 27E510C NAV Button Replacement

This guide will help you replace the monitors navigation (JOG) button.

Written By: giggythore



INTRODUCTION

The JOG button is used to control monitor functions like volume, brightness, and contrast. Common issues of this feature include the button sticking and the control stick breaking off.



TOOLS:

- [Phillips #1 Screwdriver](#) (1)
 - [Heavy-Duty Spudger](#) (1)
-

Step 1 — Back Panel



- Use the #1 Phillips head screw driver to remove each 13.75mm length screw from the rear panel.

i The screw alone with the ports is a different size than the rest, its length is 12mm.

Step 2



- Insert the heavy duty spudger in between the monitors back panel and its frame.
- Use the heavy duty spudger to pry open the back panel.

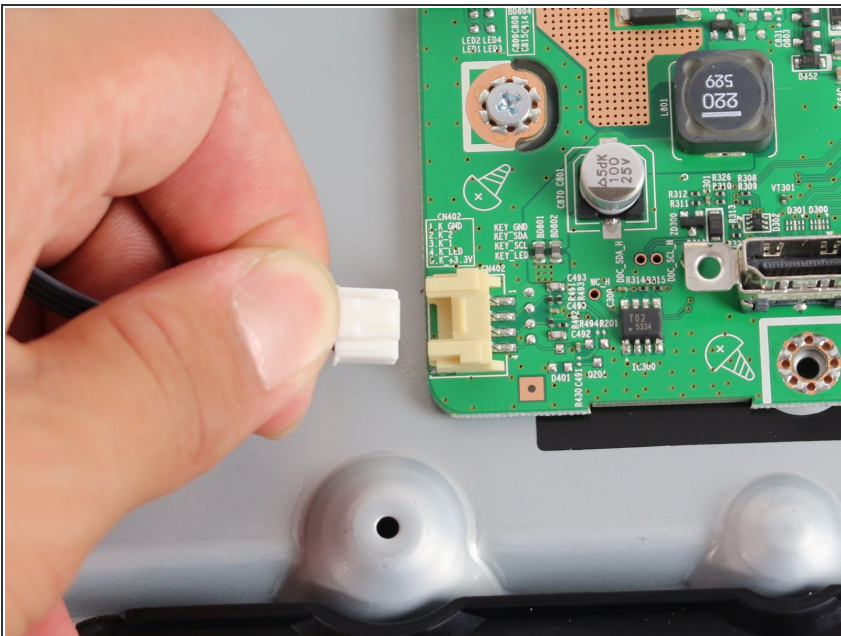
! Over aggressive prying could break the tabs holding the back panel in place.

Step 3 — Rear navigation button



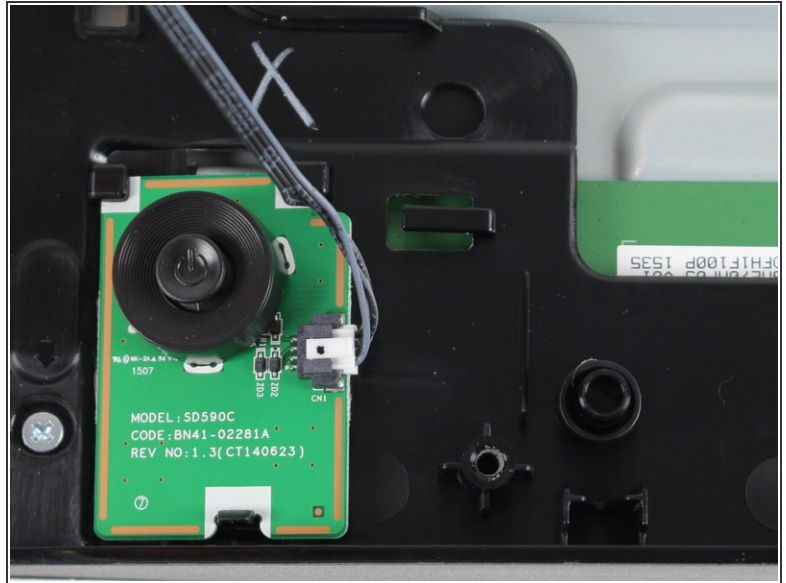
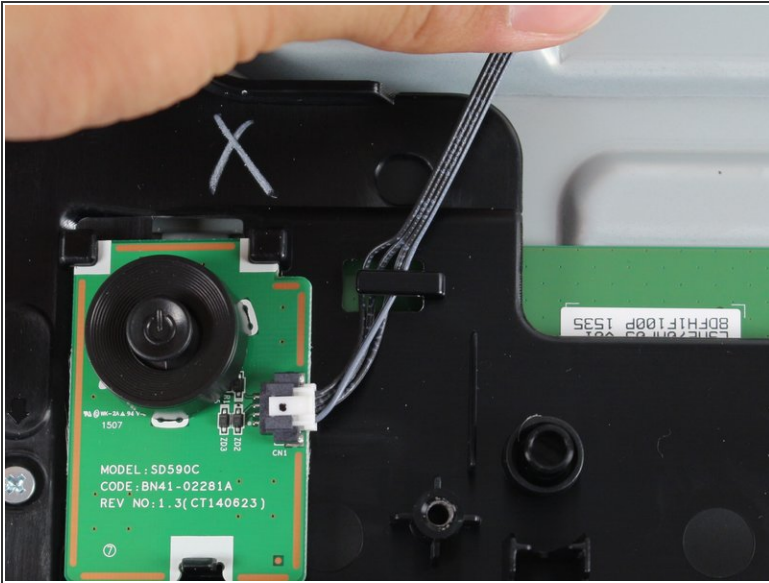
- Carefully remove the tape holding down the connector wire.
- ☑ You will need to re-attach the tape upon reassembly.

Step 4



- Disconnect the navigation button from the motherboard by holding down the thumb tab and pulling its connector out.

Step 5



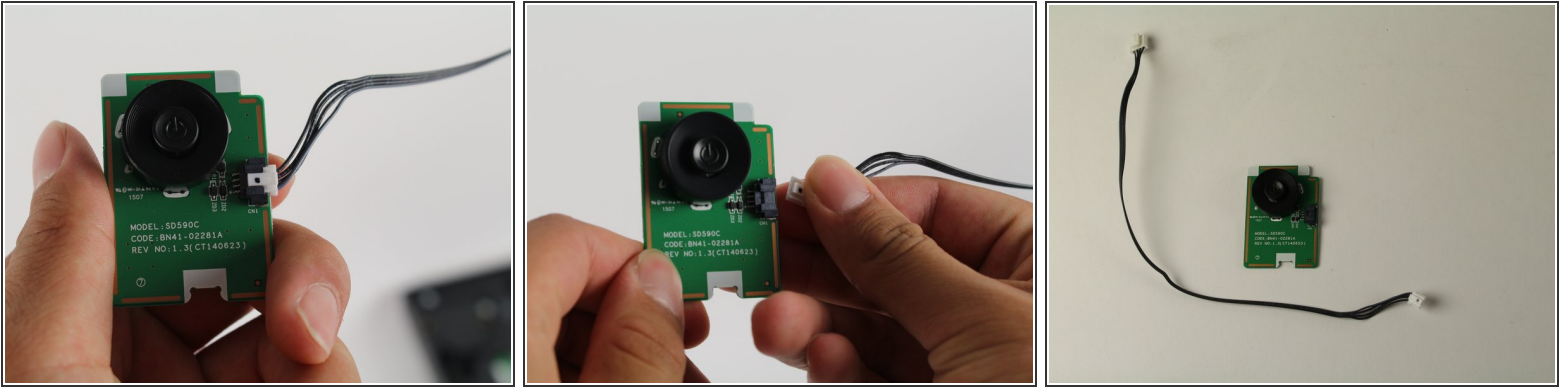
- Remove the navigation buttons connector wire from the monitors body tab.


Step 6



- With one thumb, hold down the tab on the bottom of the navigation buttons base.
- While holding the tab down, lift the base of the navigation button with your other hand.

Step 7



- Remove the connector wire from the defective navigation button by first gripping its connectors thumb tab.
 - While gripping the thumb tab, pull the connector from the base of the navigation button.
-  You can save the connector wire since it may not be defective.

To reassemble your device, follow these instructions in reverse order.