



# Samsung Chromebook XE550C22 Speakers Replacement

Replace faulty or broken speakers on a Chromebook XE550C22.

Written By: Brenna Wolfe



# INTRODUCTION

Replace faulty or broken speakers on a Chromebook XE550C22.




## TOOLS:

- [Metal Spudger](#) (1)
  - [JIS #0 Screwdriver](#) (1)
  - [Tweezers - Pro/ESD/Angled](#) (1)
  - [Spudger](#) (1)
-

## Step 1 — Back Panel



 Turn the power off before beginning this step.

- Using the spudger, remove the four 1/2 inch skid pads from the back of the laptop.

## Step 2



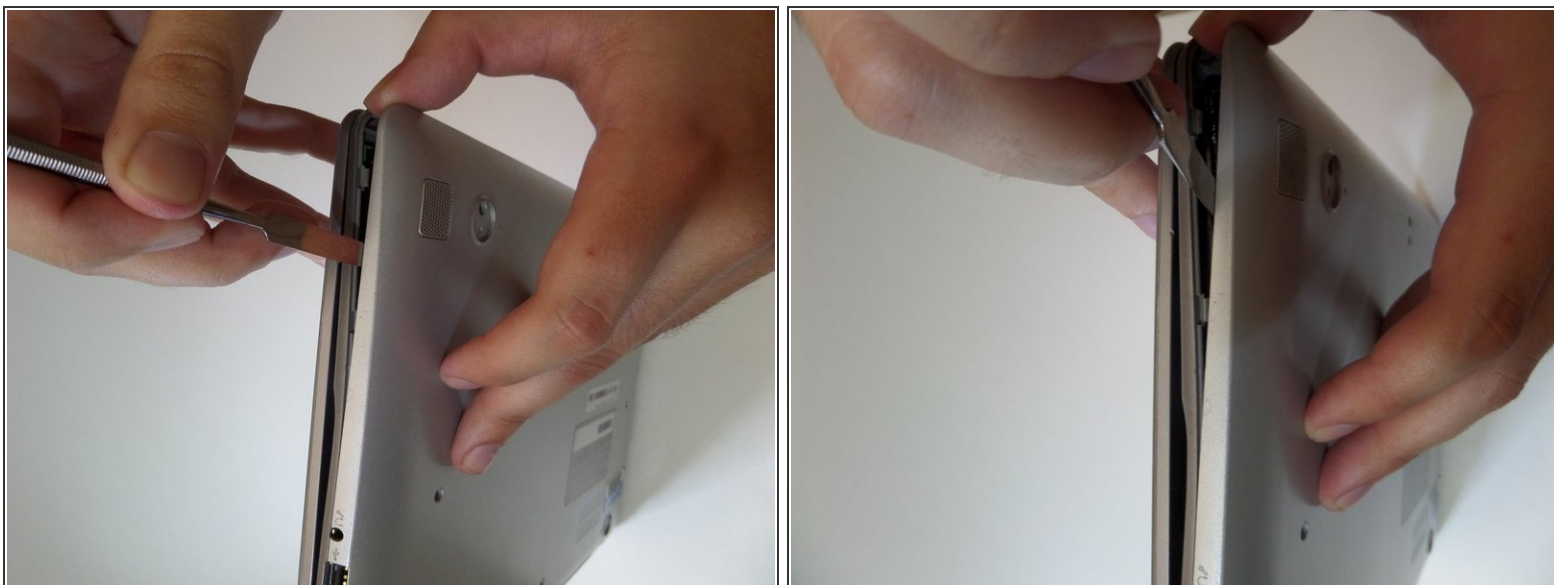
- Remove the eight 7mm screws using the J0 Screwdriver.

## Step 3



- Starting at the center front of the laptop, insert the metal spudger between the keyboard panel and the bottom panel, separating the bottom panel from the laptop.
- Continue prying around the sides to release more brackets.

## Step 4

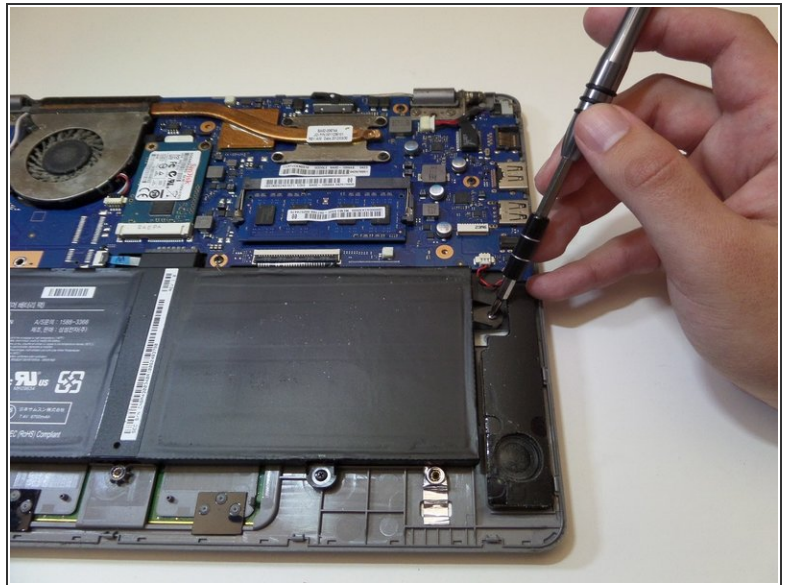


- After disconnecting all the brackets, pull the back panel away from the laptop.

**i** Note: The back panel has some flex to it, don't be afraid to use some force.

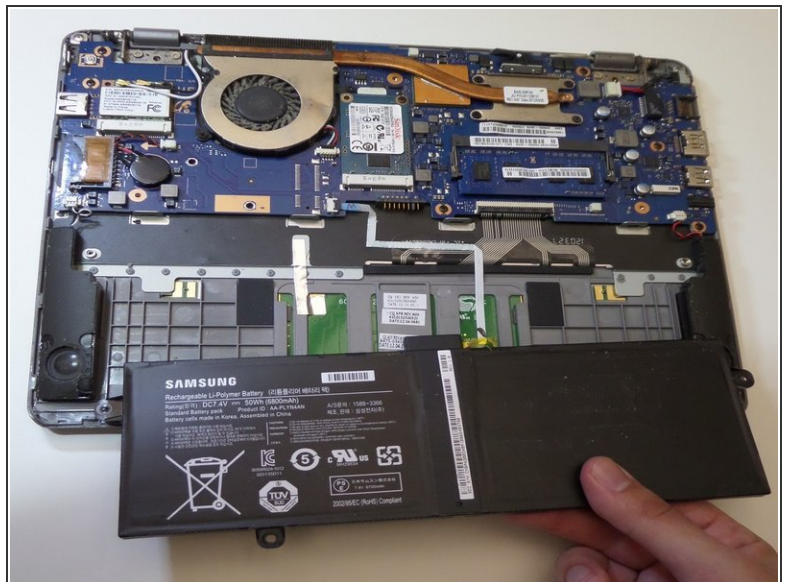
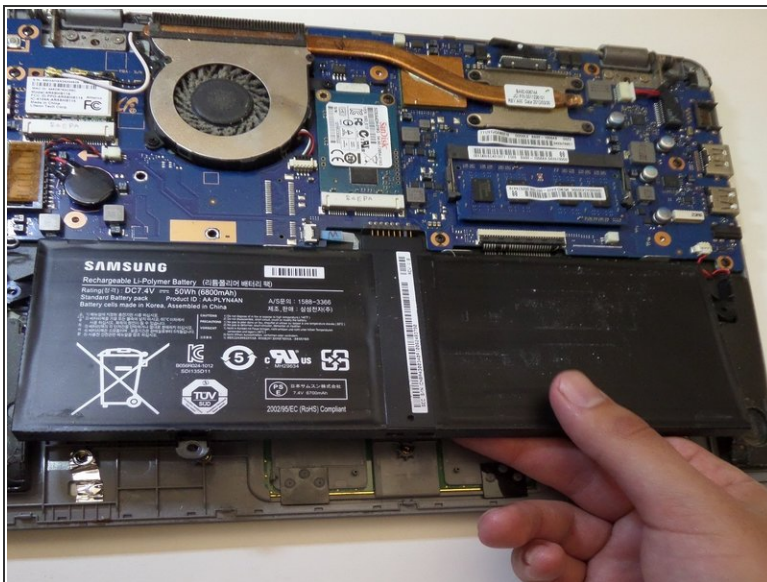


## Step 5 — Battery



- Remove the four 3mm screws holding the battery with the J0 screwdriver.

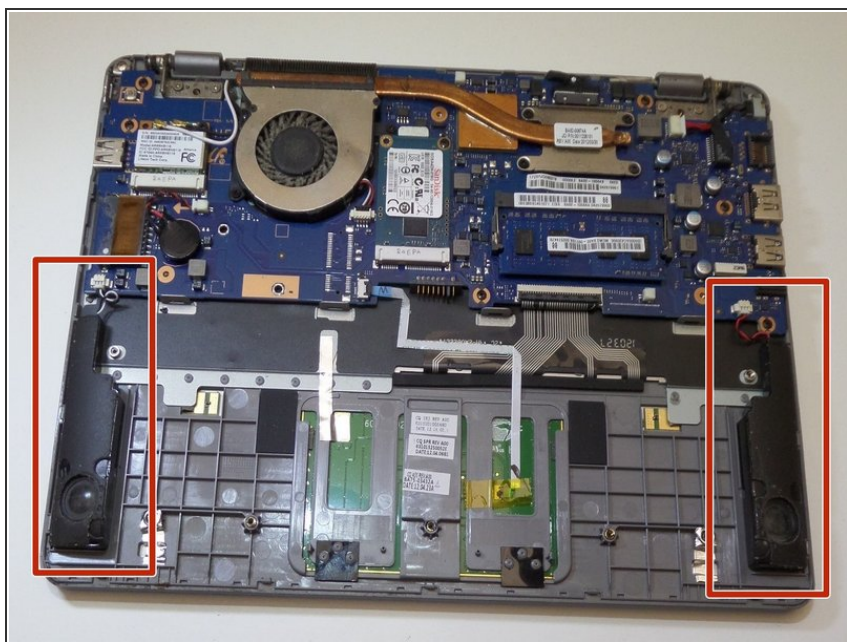
## Step 6



- Lift the battery up at an angle to disconnect the battery from the motherboard, then pull it away from the laptop.

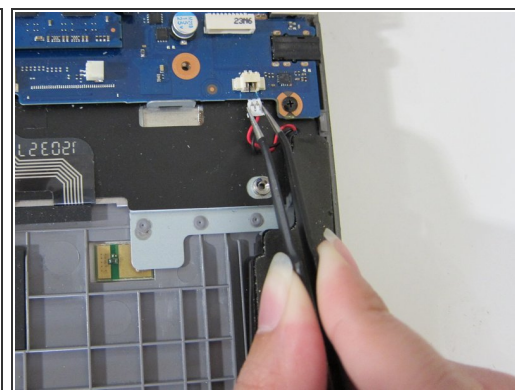
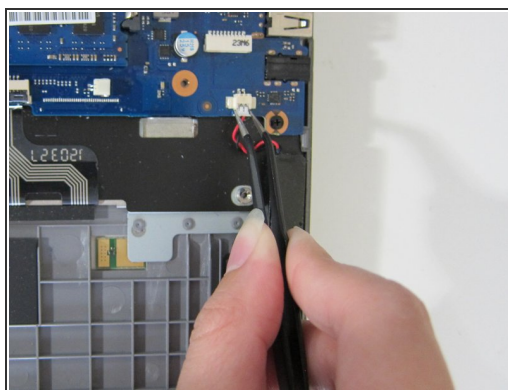
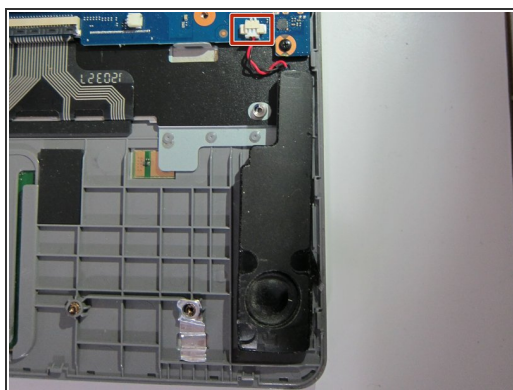
⚠ Do not lift the battery straight up. This will damage the battery's connectors.

## Step 7 — Speakers



- Locate the speakers on the bottom left and right sides of the Chromebook.

## Step 8

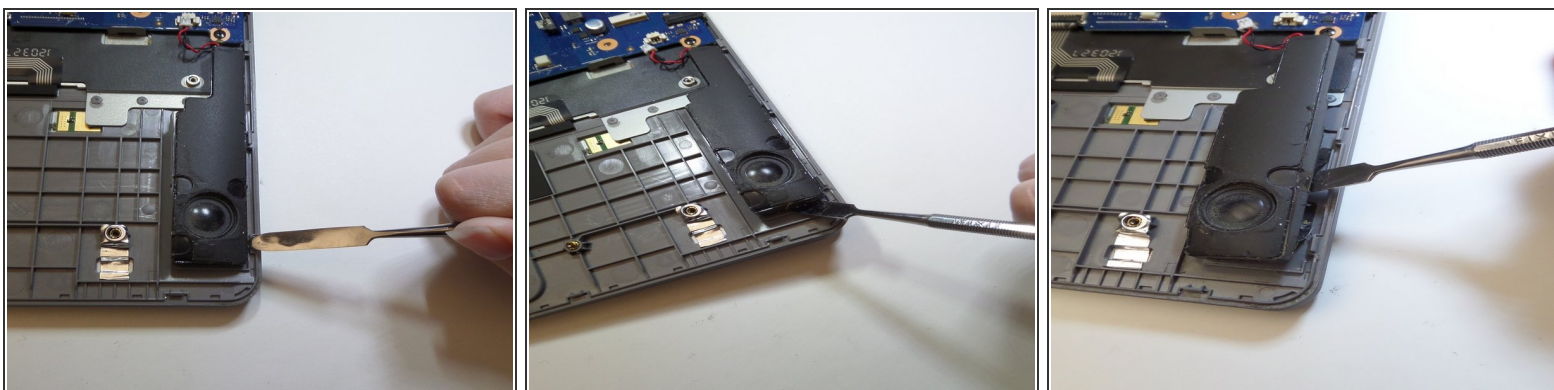



- Using the fine tipped tweezers, detach the white power clips from the motherboard.

⚠ This may require some force, but be careful not to damage the cables.

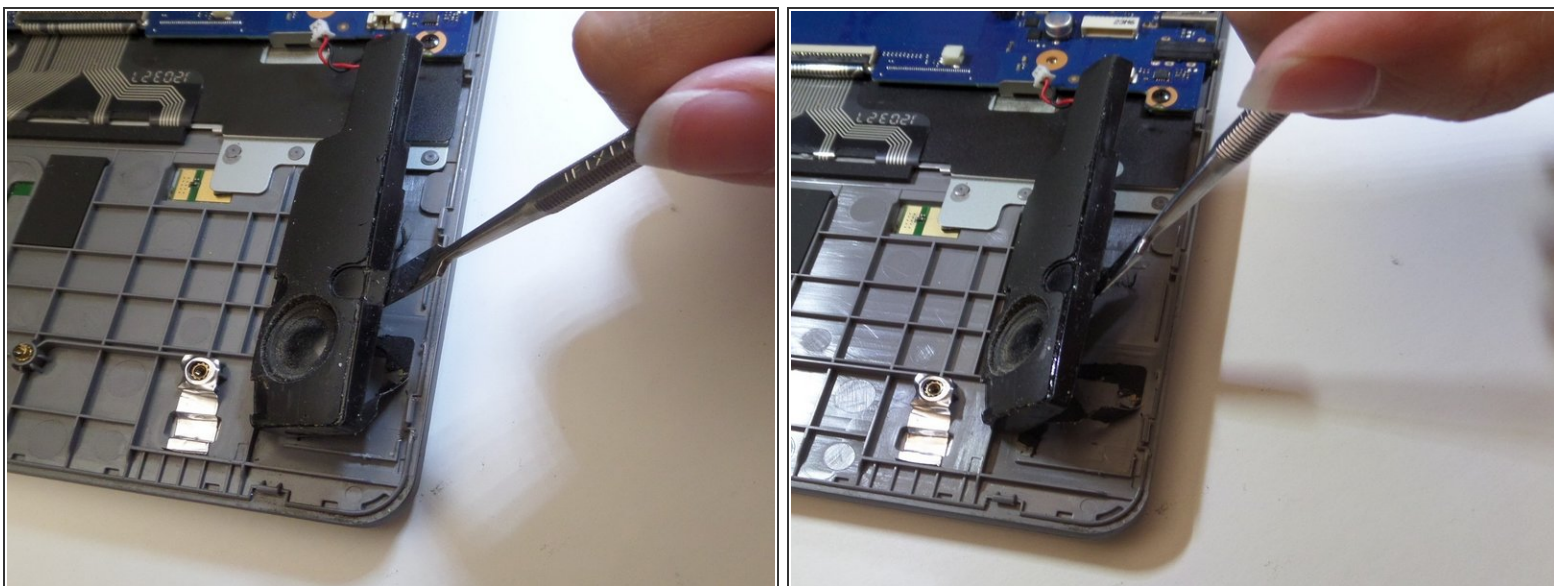


## Step 9



- Insert the prying tool between the speaker and the Chromebook.
  - Slide the prying tool under the full length of the speaker, severing the glue underneath.
-  This may take some force.

## Step 10



- Remove the speaker by lifting it up and away from the laptop.

To reassemble your device, follow these instructions in reverse order.