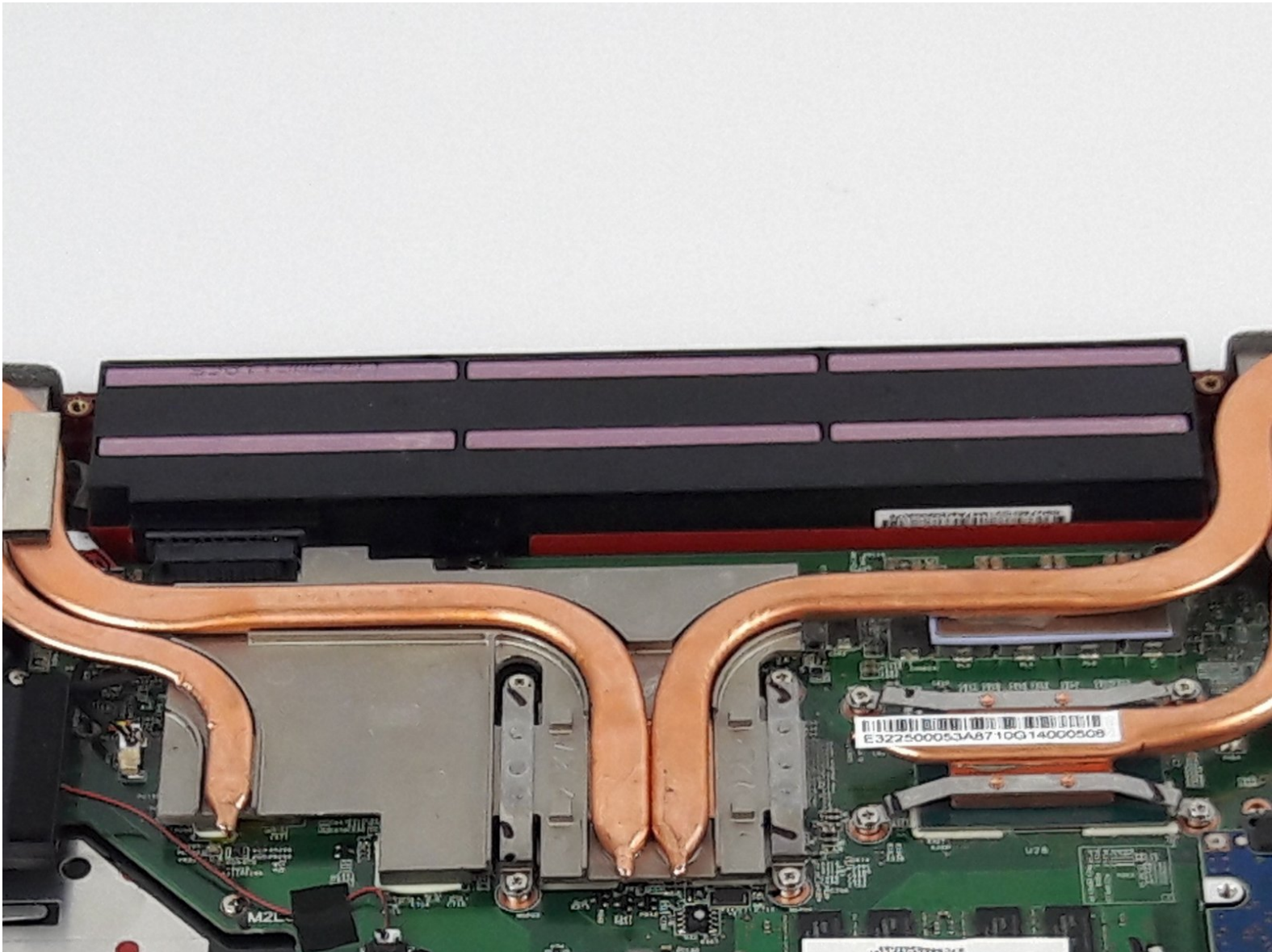




# MSI GE62 6QF Apache Pro Battery Replacement

This guide will instruct you on how to remove the battery in your MSI GE62 6QF Apache Pro.

Written By: Justice Owens



# INTRODUCTION

Use this guide to remove the battery in your device.



## TOOLS:

- [Phillips #0 Screwdriver](#) (1)
- [iFixit Opening Tools](#) (1)



## PARTS:

- [MSI BTY-M6H Replacement Battery](#) (1)

## Step 1 — Optical Drive



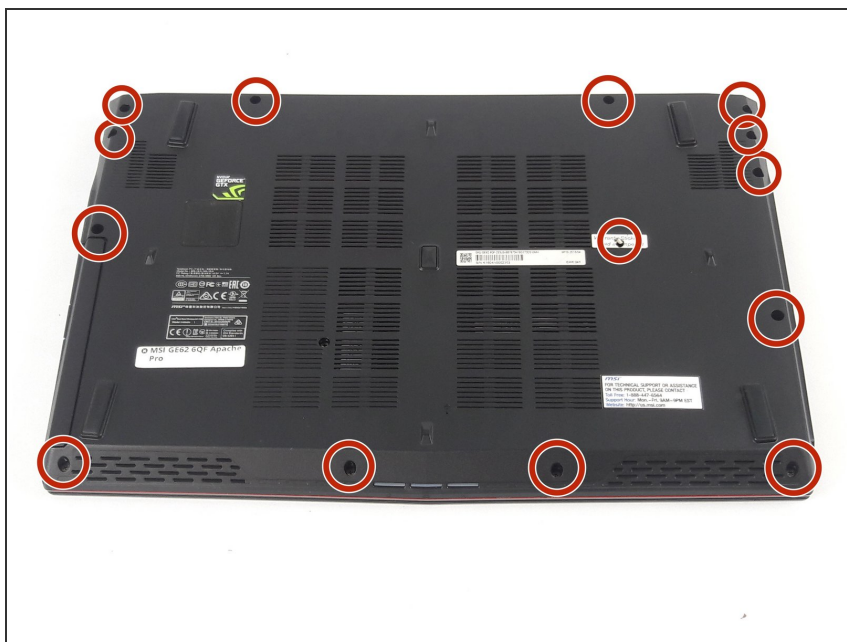
- Use a Phillips screwdriver to remove the 5mm screw securing the optical drive to the bottom case.

## Step 2



- Slide Optical Drive out of the computer.

## Step 3 — Bottom Case



- Use a Phillips screwdriver to remove the fourteen 5mm screws on the back of the laptop.
- ⓘ One of these screws is hidden under a sticker.

## Step 4



- Remove the three PH #0 2mm screws that were hidden underneath the optical drive.

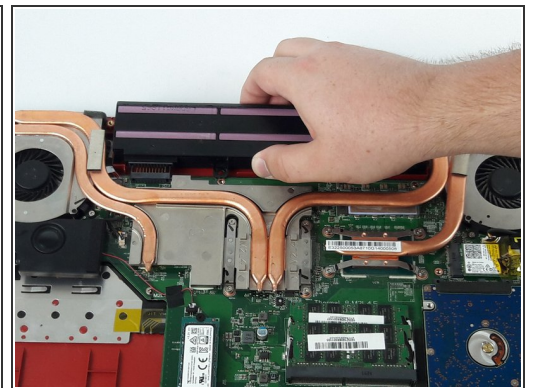
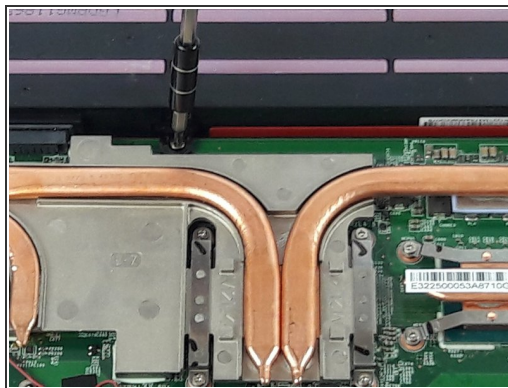
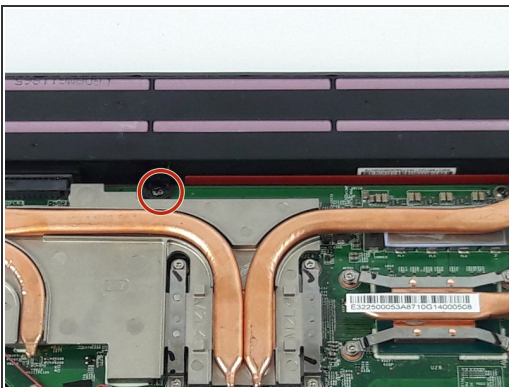


## Step 5



- Use an opening tool to run along the seam of the case where the upper and bottom case meet.
- Pry the bottom case and remove from the upper part.

## Step 6 — Battery



- Remove the single PH #0 5mm screw holding the battery pack in place.
- Remove the battery by sliding it away from the computer.

To reassemble your device, follow these instructions in reverse order.