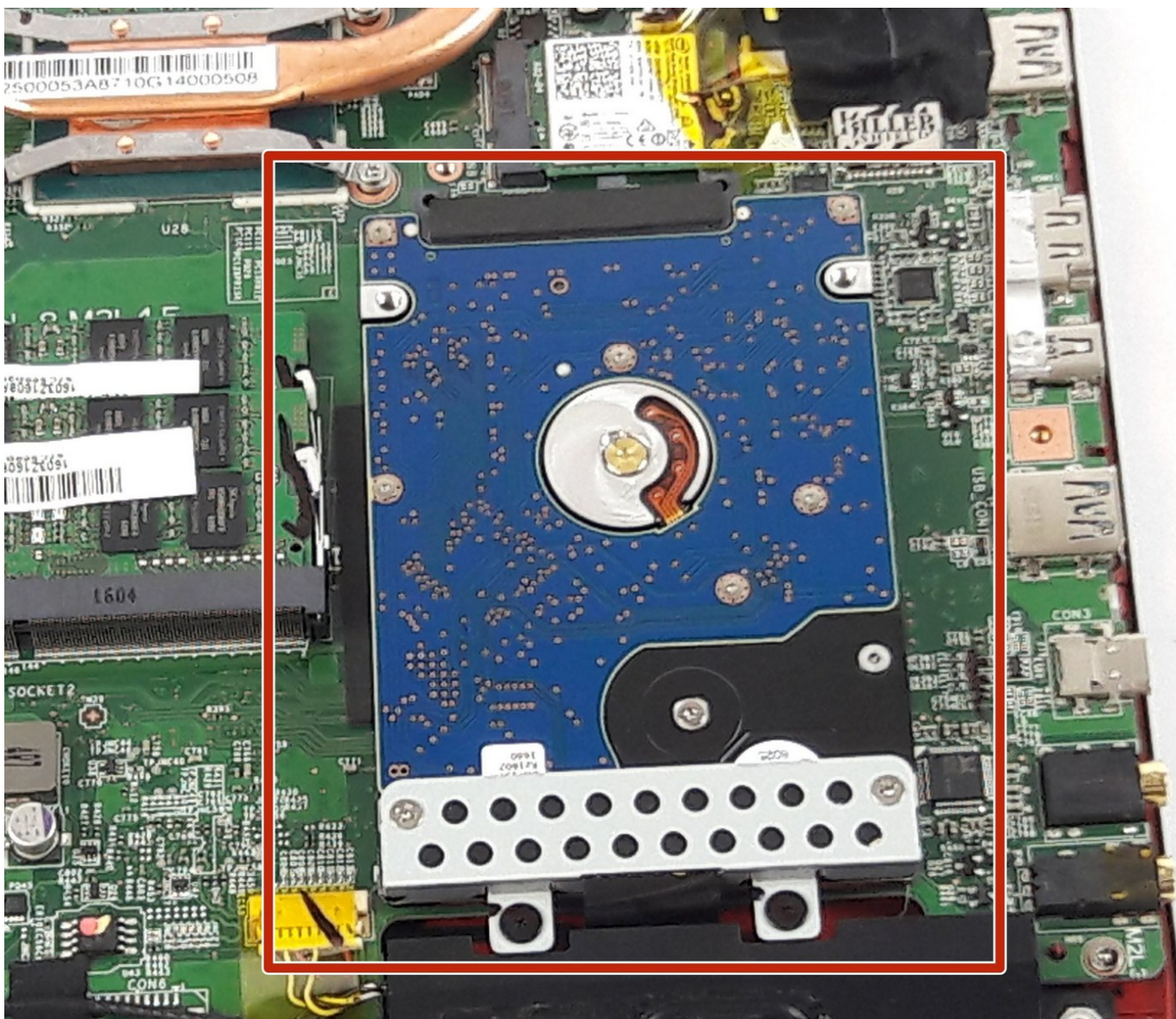




MSI GE62 6QF Apache Pro Hard Drive Replacement

This guide will follow you through replacing the hard drive in the MSI GE62 6QF Apache Pro laptop.

Written By: Justice Owens



INTRODUCTION

Use this guide to remove the hard drive of your device.



TOOLS:

- [Phillips #0 Screwdriver](#) (1)
- [Spudger](#) (1)



PARTS:

- [1 TB SSD / Upgrade Bundle](#) (1)
- [250 GB SSD / Upgrade Bundle](#) (1)
- [500 GB SSD / Upgrade Bundle](#) (1)
- [2 TB SSD](#) (1)

Step 1 — Optical Drive



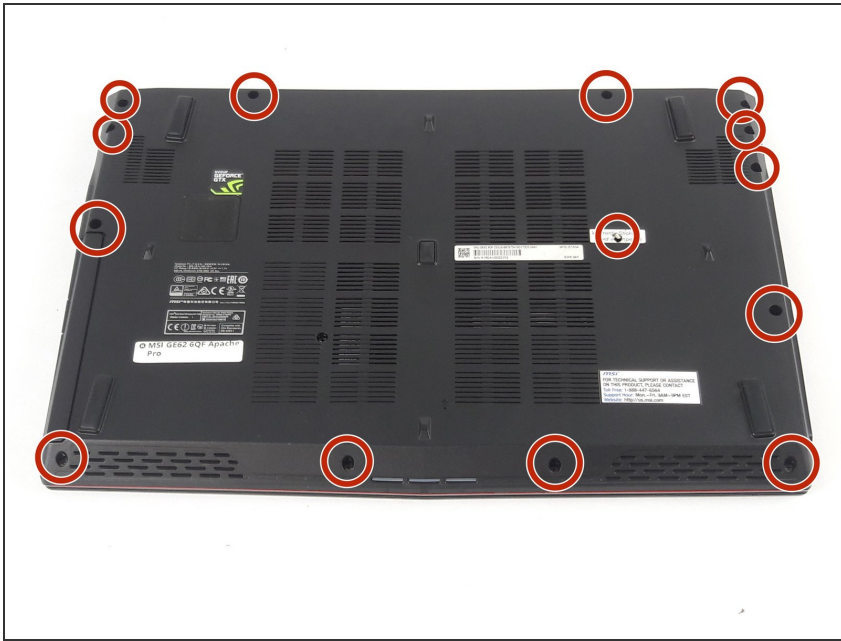
- Use a Phillips screwdriver to remove the 5mm screw securing the optical drive to the bottom case.

Step 2



- Slide Optical Drive out of the computer.

Step 3 — Bottom Case



- Use a Phillips screwdriver to remove the fourteen 5mm screws on the back of the laptop.
- ⓘ One of these screws is hidden under a sticker.

Step 4



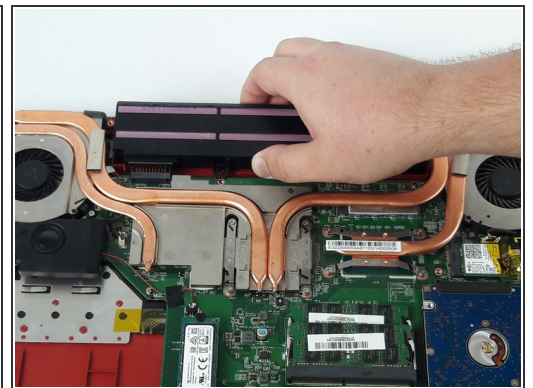
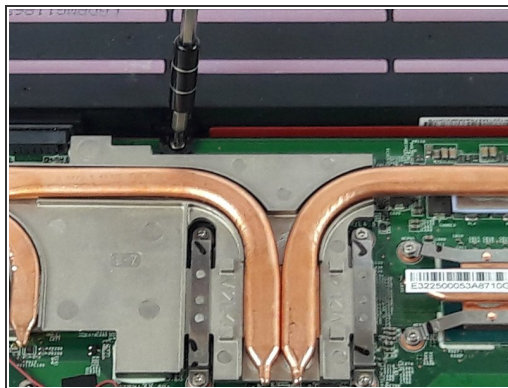
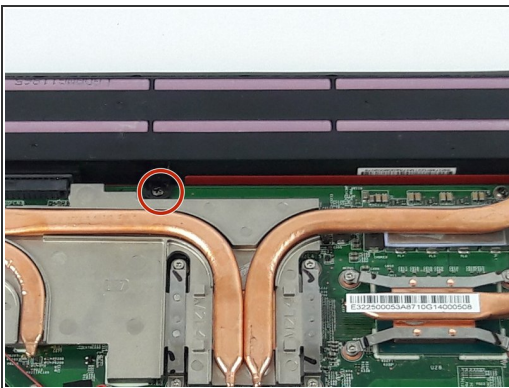
- Remove the three PH #0 2mm screws that were hidden underneath the optical drive.

Step 5



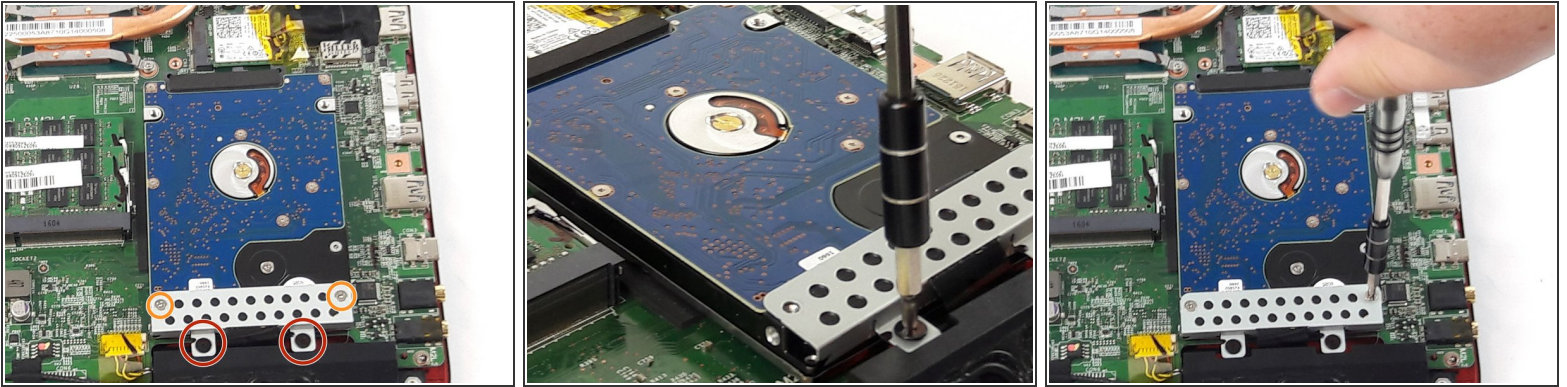
- Use an opening tool to run along the seam of the case where the upper and bottom case meet.
- Pry the bottom case and remove from the upper part.

Step 6 — Battery



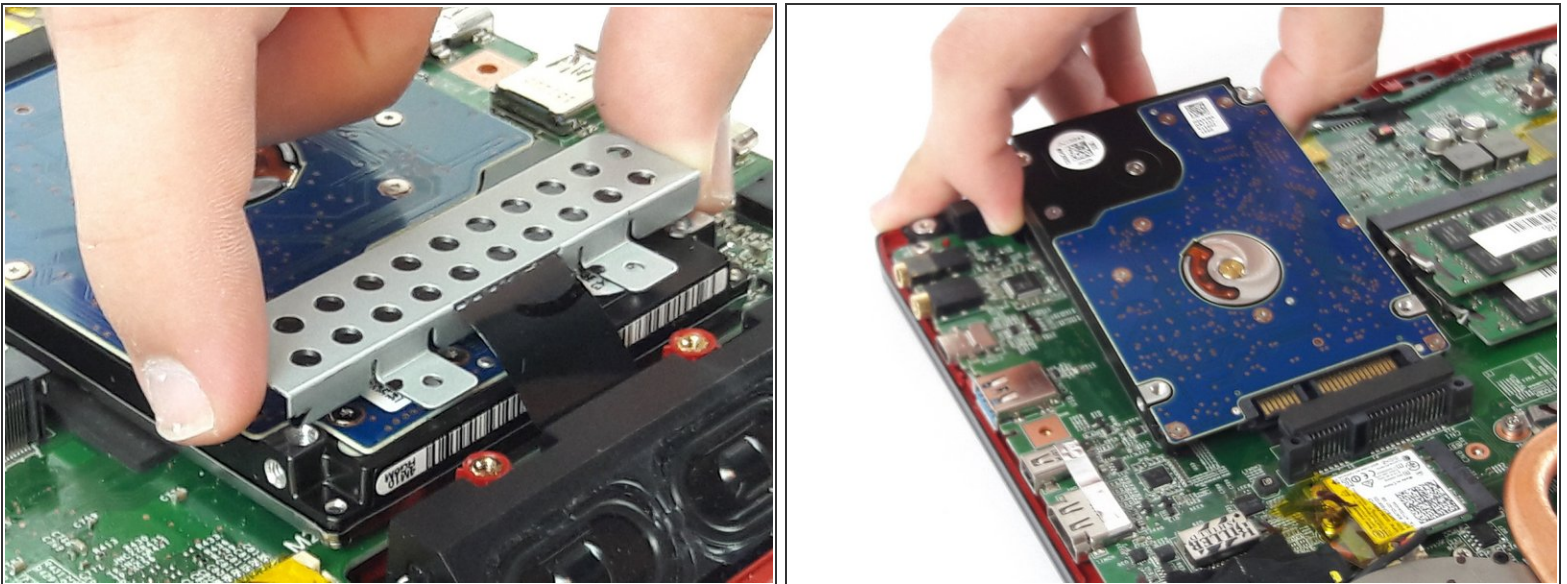
- Remove the single PH #0 5mm screw holding the battery pack in place.
- Remove the battery by sliding it away from the computer.

Step 7 — Hard Drive



- Unscrew the two black PH #0 2mm screws holding the lower part the hard drive plate
- Unscrew the two PH #0 4mm screws holding the upper part of the hard drive plate

Step 8



- Remove the hard drive by gently lifting up and pulling the drive out of the connection slot

To reassemble your device, follow these instructions in reverse order.