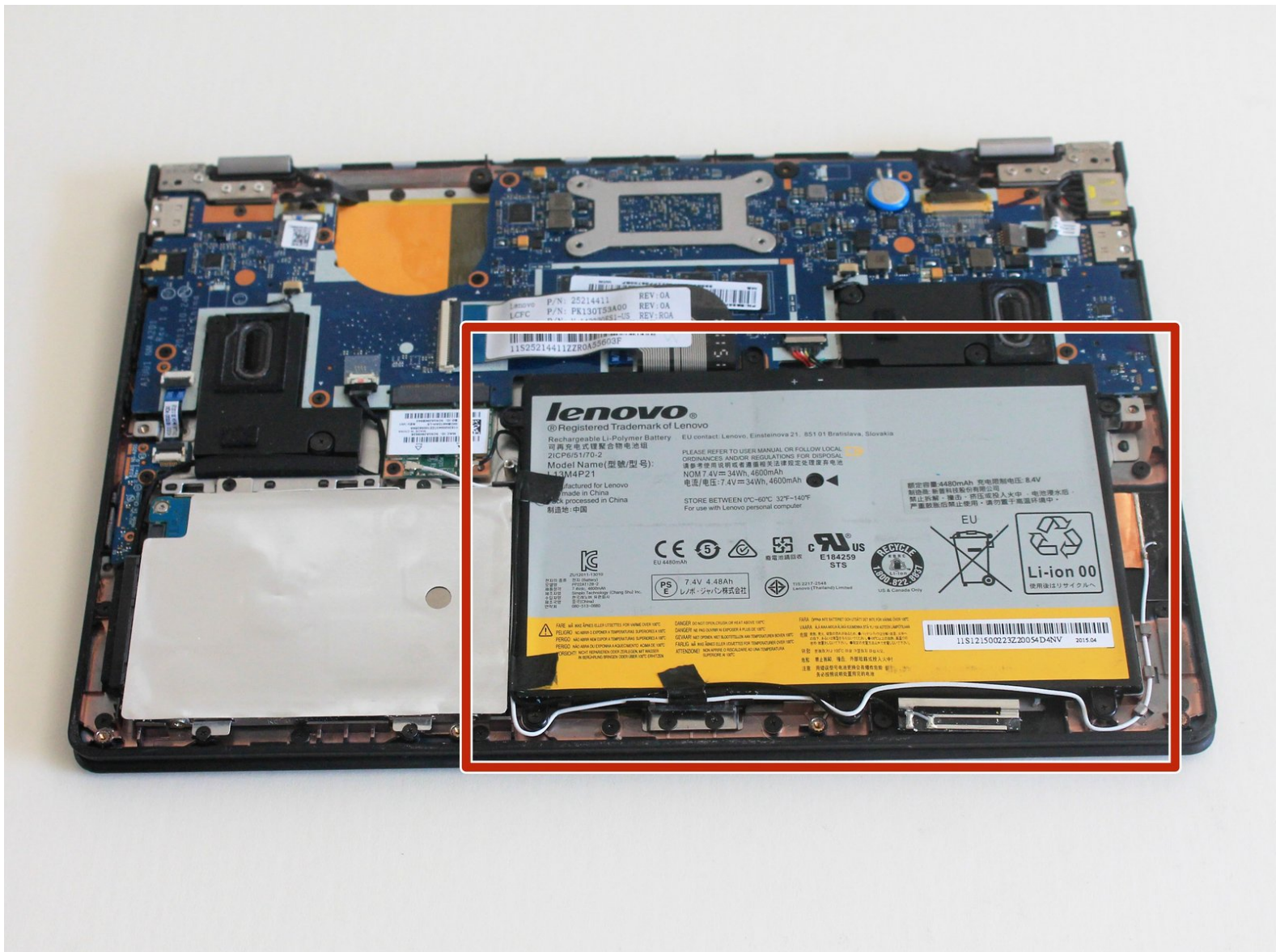




Lenovo Ideapad Yoga 2 11 Battery Replacement

The battery can possibly die quickly although...

Written By: Andria Chen



INTRODUCTION

The battery can possibly die quickly although the laptop can turn on when the charging cord is connected. This issue is the result of needing a battery replacement. This guide will show how to remove and replace your battery.



TOOLS:

- [T5 Torx Screwdriver](#) (1)
- [Phillips #000 Screwdriver](#) (1)
- [Tweezers](#) (1)



PARTS:

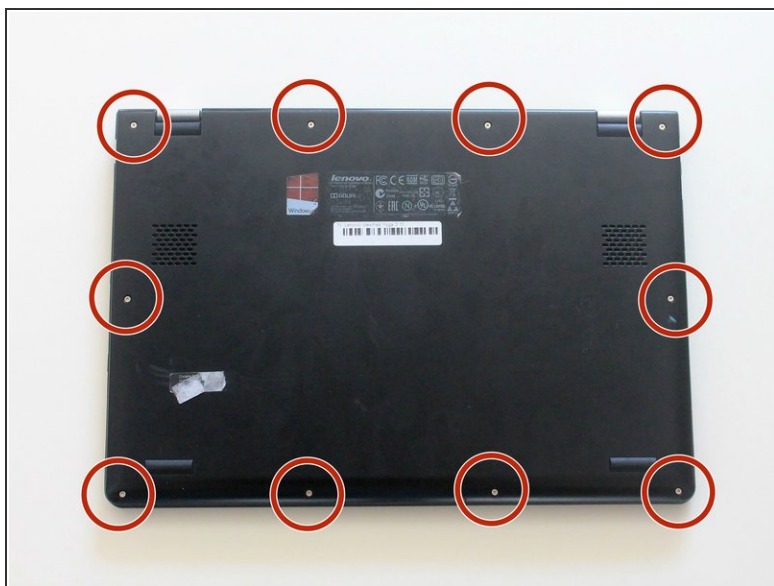
- [Lenovo Yoga 2 11 Tablet Laptop Battery](#) (1)

Step 1 — Back Panel



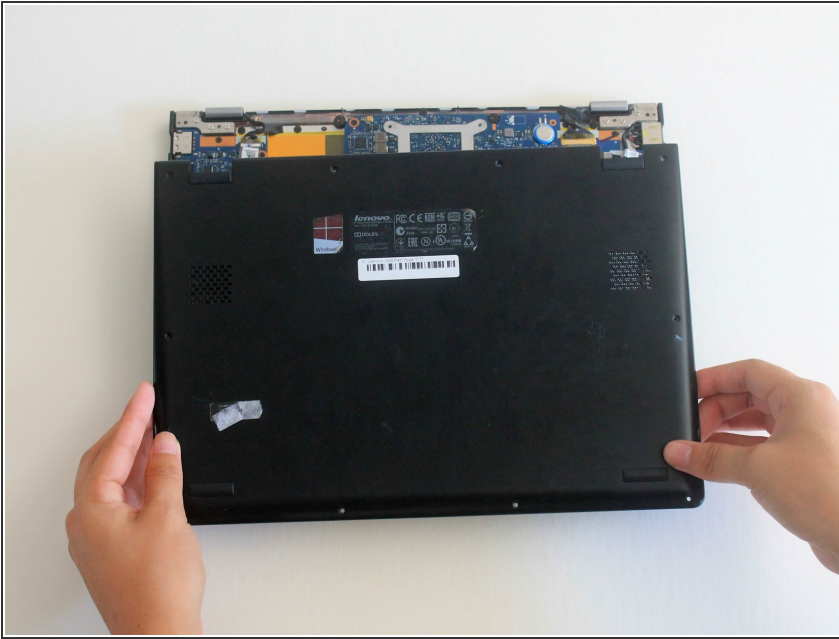
- Begin by turning your closed laptop so that you are looking at the bottom panel.

Step 2



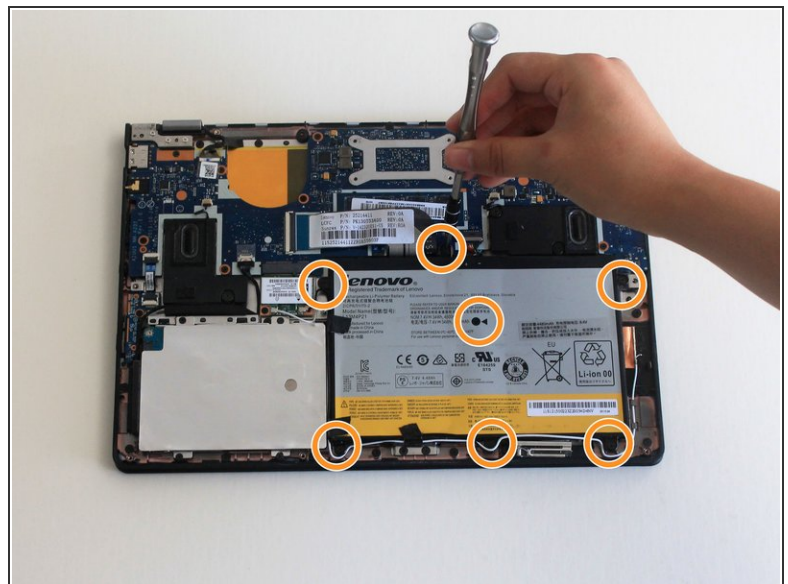
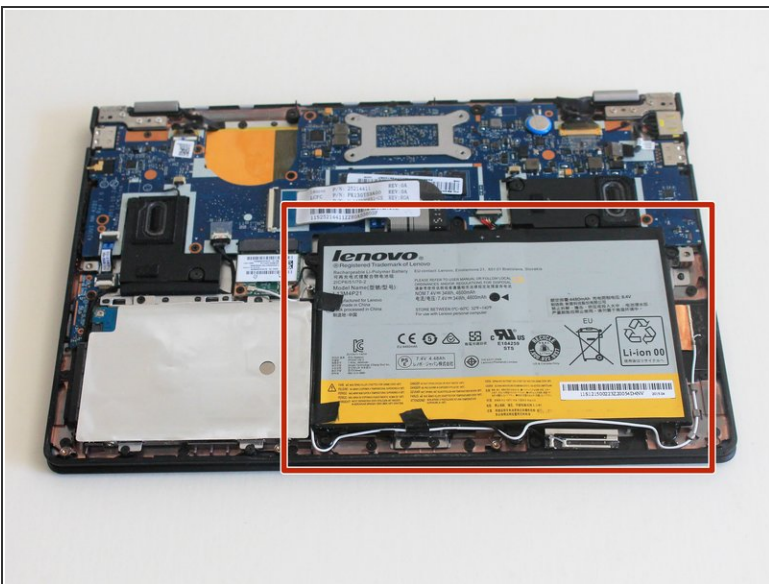
- Locate the 10 screws (6mm) around the border of the panel.
- Using the Torx T5 Screwdriver, remove the screws.

Step 3



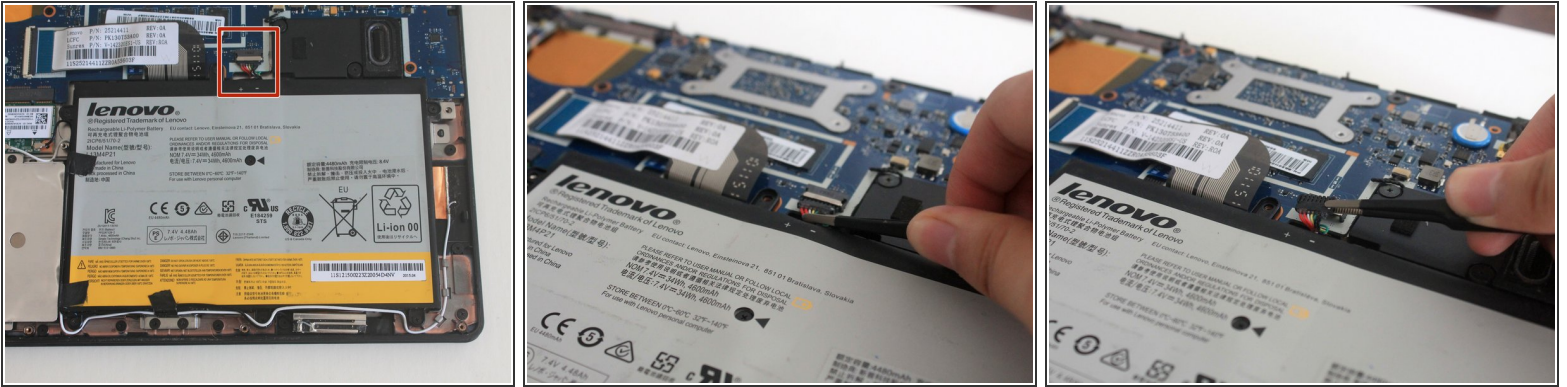
- Now that the screws are removed, gently lift the back panel upwards to detach it from the rest of your laptop.

Step 4 — Battery



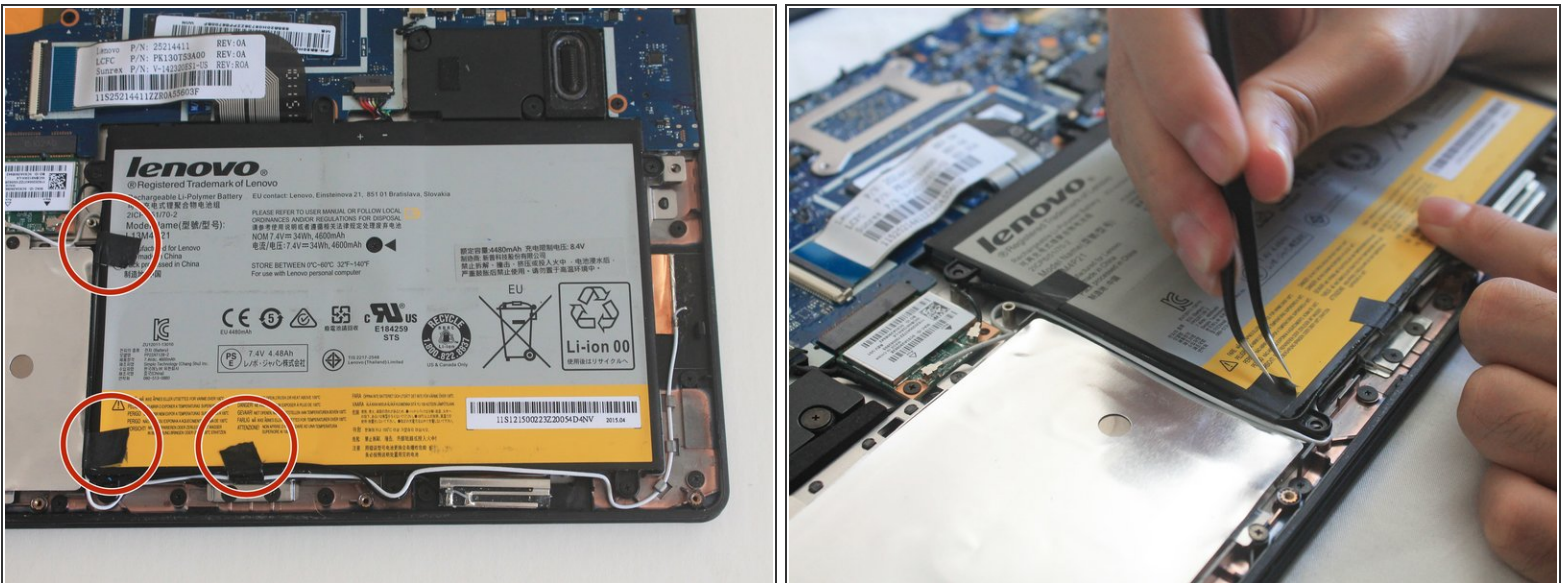
- Locate the battery in the bottom right corner.
- Using a Phillips #000, remove the 6 screws (3.5mm) on the border of the battery and the 7th screw (6.5mm) that is in the center of the battery.

Step 5



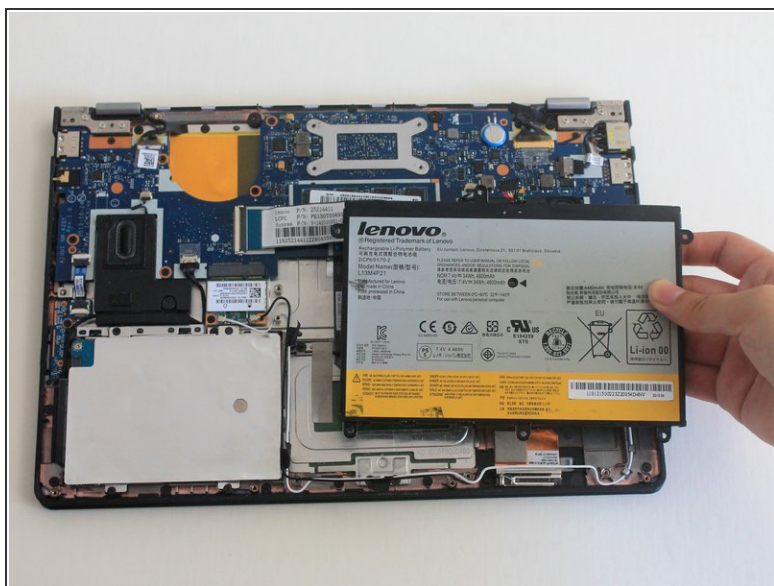
- Locate the cable connecting to the battery. It is located at the top-center of the battery.
- Use a pair of tweezers and place it so that the tweezer is around the cables. Gently pull the cables towards the battery to disconnect the cable.

Step 6



- There may be tape around the edge of the battery to secure some wires. Use a pair of tweezers to remove the tape so that the wires are no longer attached to the battery.

Step 7



- After you have unscrewed the screws, unplugged the cable, and removed the tape and wires, you can remove the battery from your laptop.

To reassemble your device, follow these instructions in reverse order.