



# M3D Micro Z Axis Belt Replacement

This guide will show how to access and replace the Z axis belt within the device.

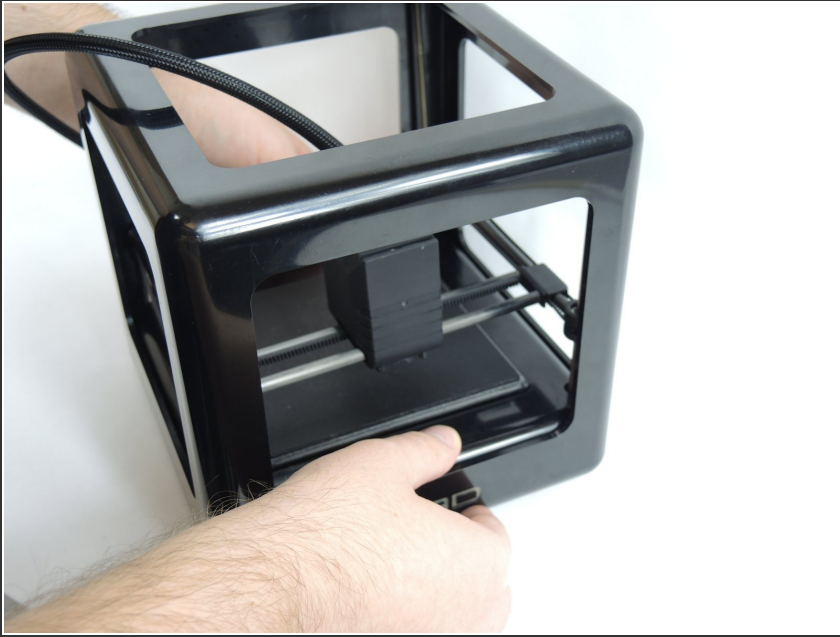
Written By: Danyel Browning



## INTRODUCTION

This guide will show how to open the device and remove the z-axis belt. This is the largest belt that goes around all 4 of the threaded z-axis rods at each corner of the printer. While no tools are required for this process, care needs to be taken in order to keep the Z rods vertical to ensure proper realignment of the belt and easy reassembly.

## Step 1 — M3D Micro Frame Removal



- Removing the frame is necessary to access the z axis belt, motors and ports. Make sure the unit is unplugged and set on a hard level surface.

## Step 2



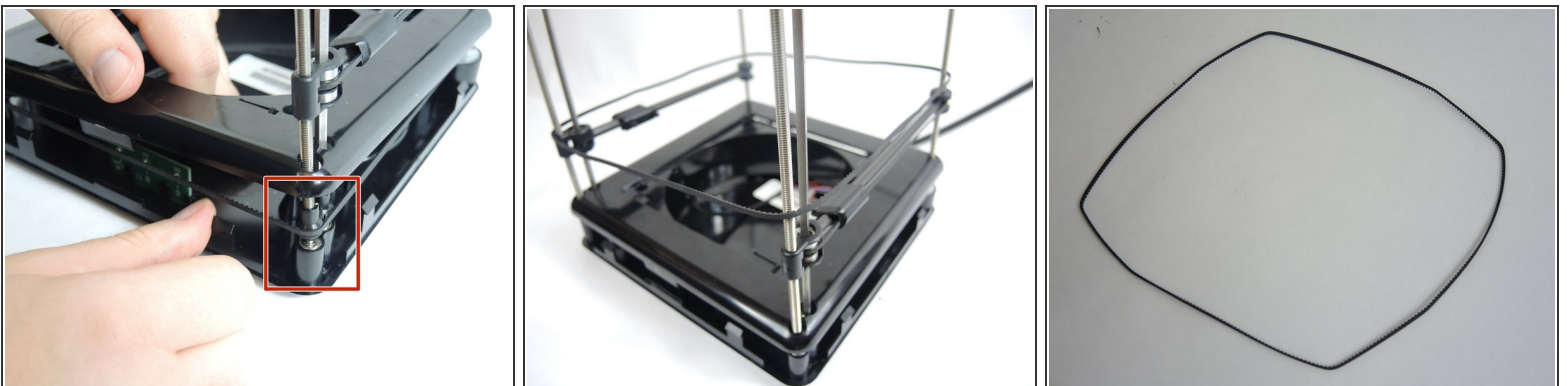
- Pull the x-rods away from the plastic sliders on the y-rods, and flip the slider upwards to release the tracks. Lift the extruder assembly out of the way.

## Step 3



- No tools are required to remove the frame. Press down on the printing bed with your thumbs while lifting the frame with your fingers. The frame easily slides up.

## Step 4 — Z Axis Belt



- Remove the z axis belt from the device by simply lifting each corner of the belt off the corner gears and slide up over the z axis bars.

To reassemble your device, follow these instructions in reverse order.