



# Motorola MOTO W755 Cell Phone Camera Replacement

This guide shows how to replace the camera.

Written By: C Miller



---

# INTRODUCTION

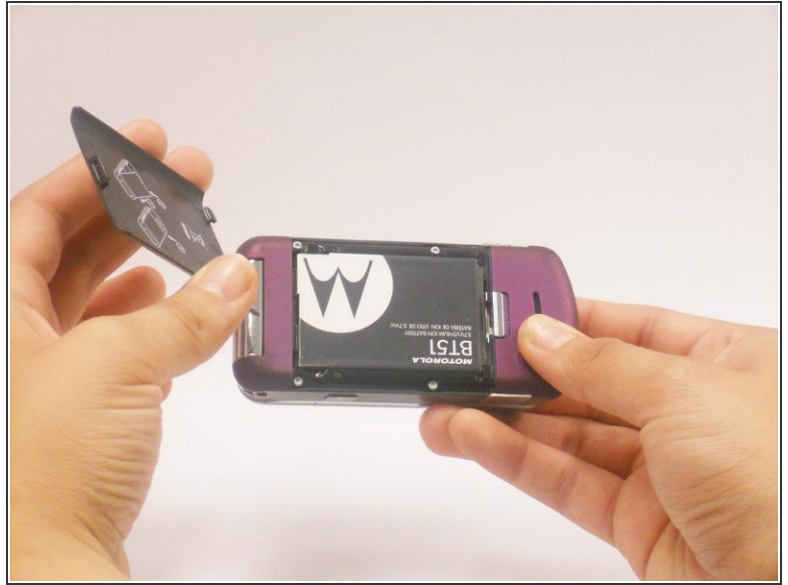
Replace the camera for your Motorola MOTO phone.



## TOOLS:

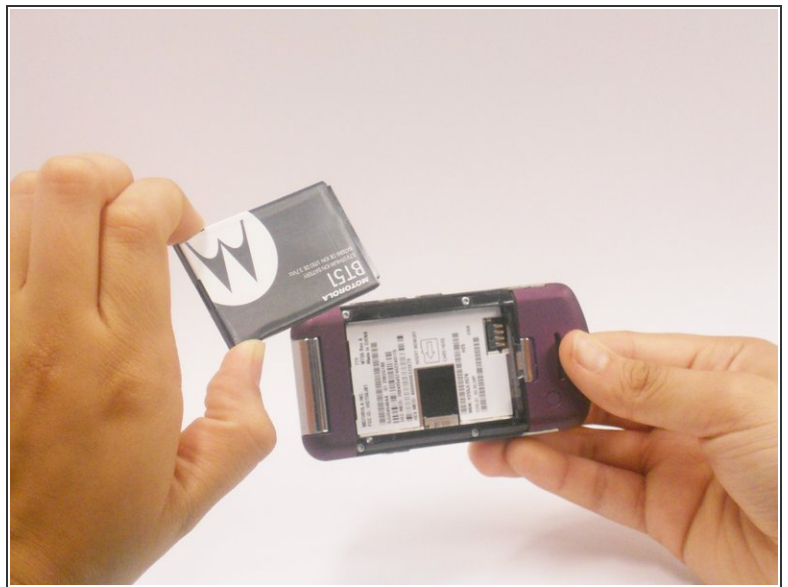
- [iFixit Opening Tools](#) (1)
  - [2.5 mm Flathead Screwdriver](#) (1)
  - [T6 Torx Screwdriver](#) (1)
-

## Step 1 — Battery



- Using your finger, press down on the clip holding the back cover on
- Pull the back cover off.

## Step 2



- Place thumb and index finger in the spaces on either side of the battery.
- Pull battery out.

## Step 3 — Top Panel



- Use the plastic opening tool to pull peel back screen cover.
- Gently peel back the screen cover from the speaker slit.
- Using the T6 Torx-screwdriver, remove the four 4.3 mm screws from the top panel.

## Step 4



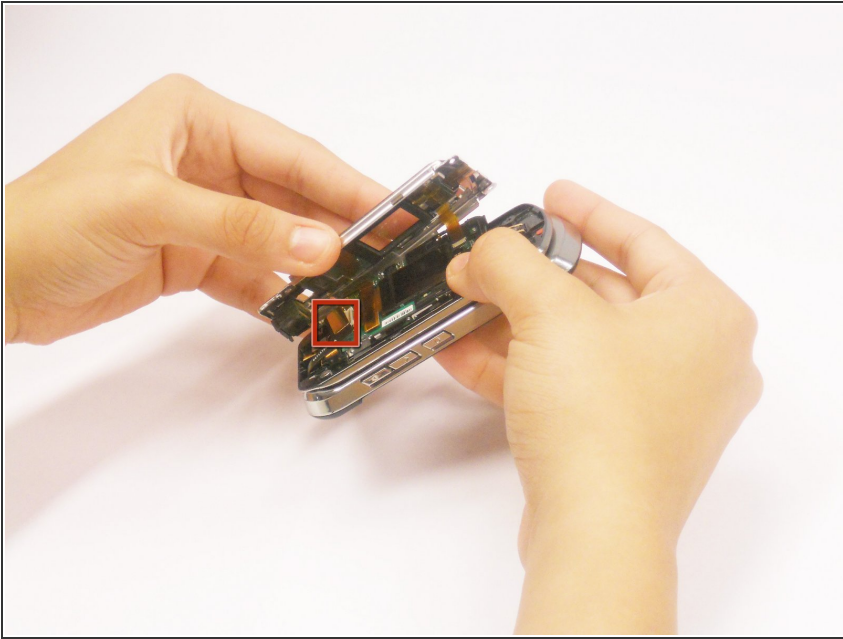
- Using the flat end of the plastic opening tool, insert it underneath the plastic cover on the top right corner.
- Move the opening tool around the phone counter clockwise.
- Pop the plastic cover off by twisting the plastic covering tool.

## Step 5



- Using a flat head screwdriver, insert it between the metal logic board casing and the top portion of the phone
- Move the plastic opening tool around the phone until part of the casting is popped off.
- You will need to pop in the four plastic fasteners individually from the metal casing to remove it
- Be careful not to rip the cable ribbons that are attached to the logic board and casing

## Step 6



- Use the flat end of the plastic opening tool to unclip the cable ribbon from the logic board

## Step 7



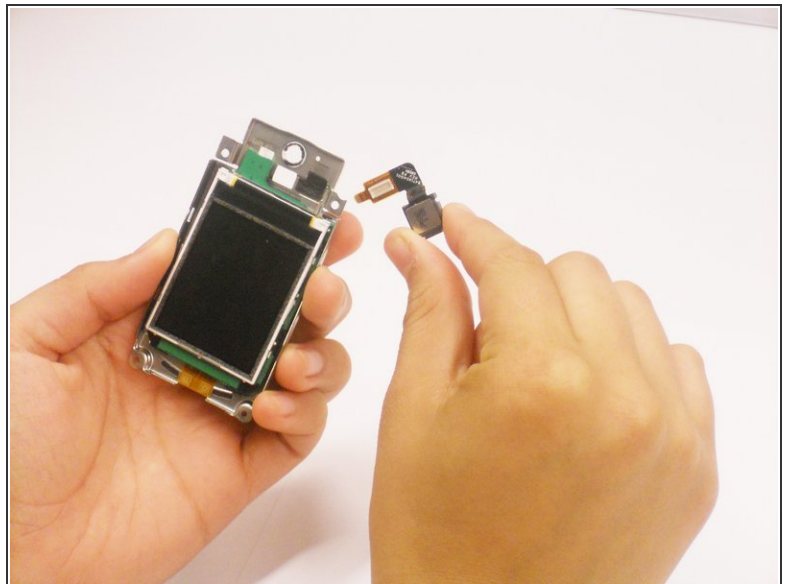
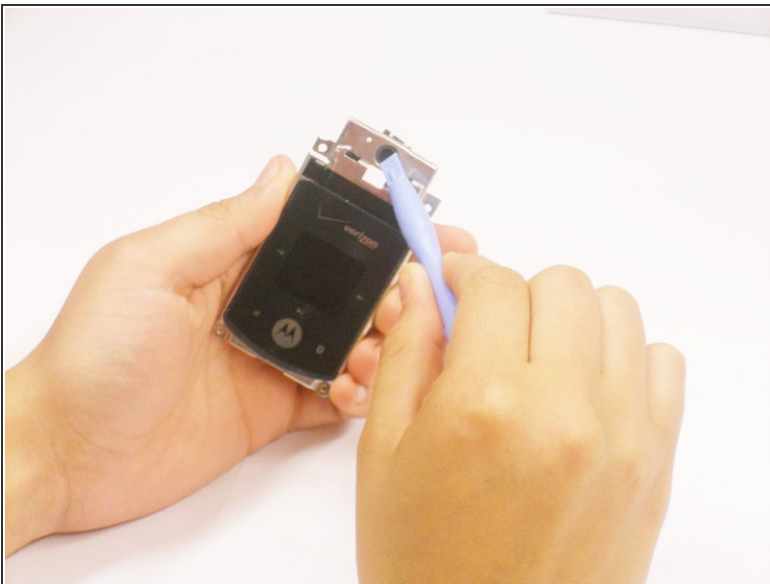
- You now have the top panel completely detached.

## Step 8 — Camera



- Using the plastic opening tool, peel back the plastic cover that is glued on top of the camera lens.

## Step 9



- Using the plastic opening tool, gently push the camera out from the front.
- Part of the foam holding the camera will rip from the adhesive.

To reassemble your device, follow these instructions in reverse order.