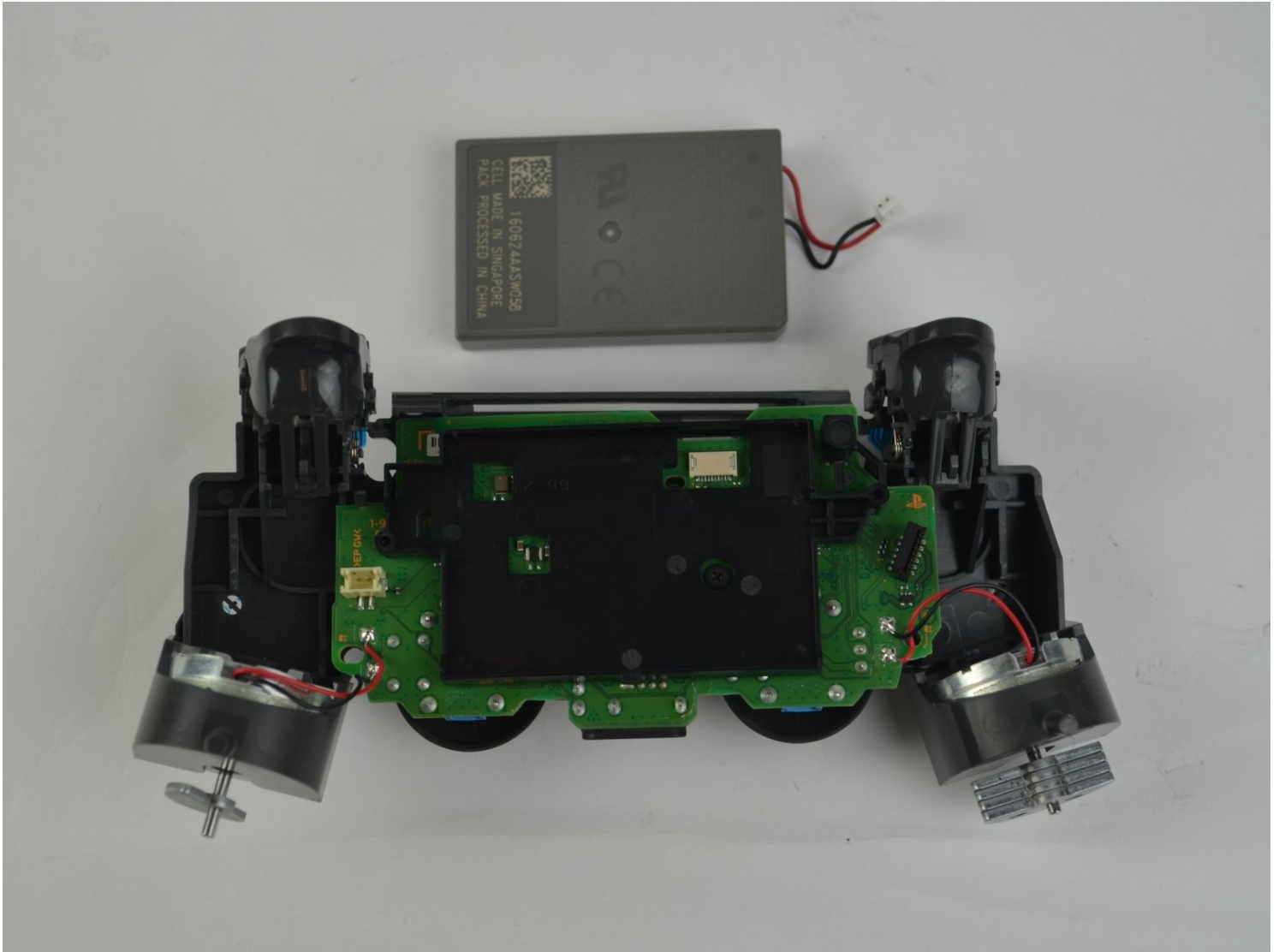




Archived

DualShock 4 CHU-ZCT2U Battery Case Replacement

Written By: Michelle Joseph



🔧 TOOLS:

Phillips #00 Screwdriver (1)

Tweezers (1)

iFixit Opening Tool (1)

⚙️ PARTS:

PlayStation 4 Controller (JDM-040)

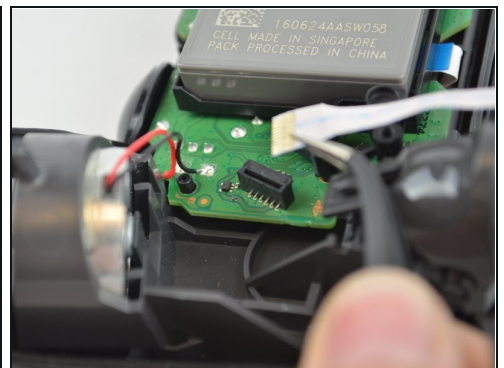
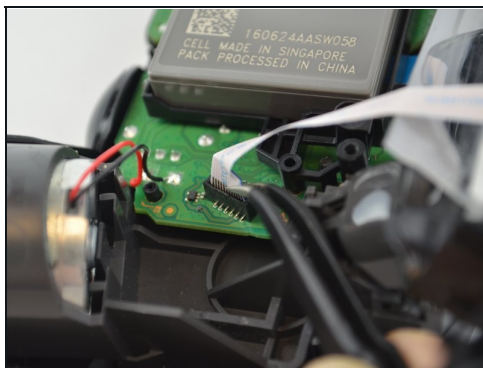
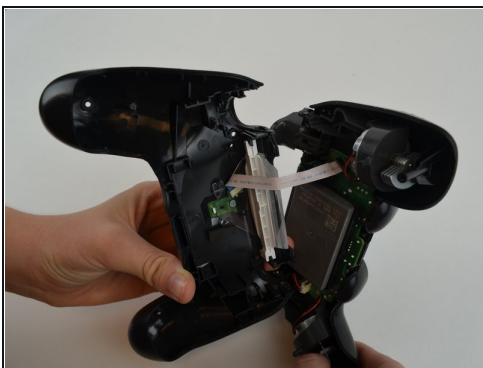
Battery (1)

Step 1 — Outer Shell



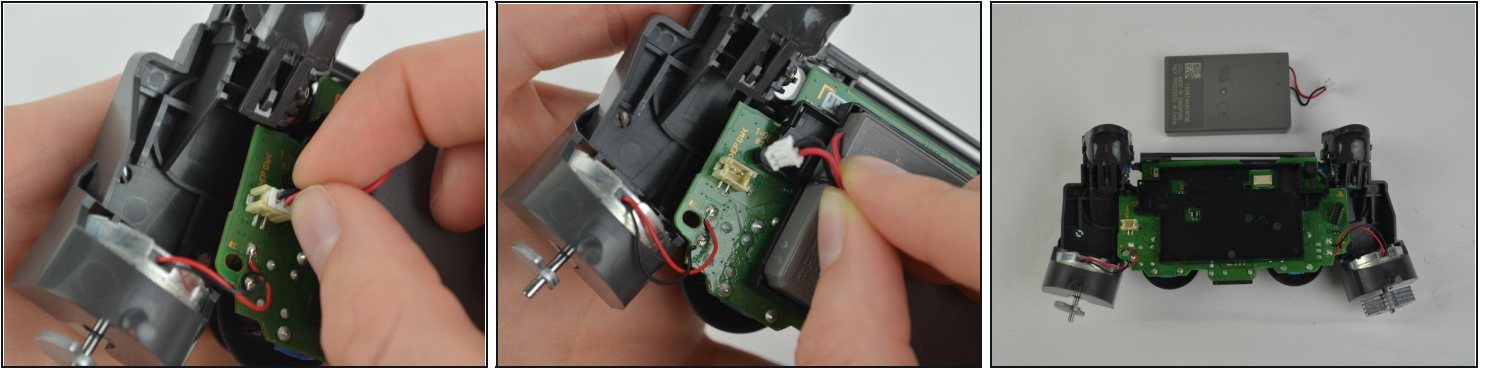
- Unscrew the four 6.5mm screws, using a Phillips-Head screwdriver.
- Pry the two halves of the shell apart using a plastic opening tool.
- ⓘ Be careful, as there will be a ribbon connecting the inner workings of the controller. It will not separate into two parts just by pulling apart the shell.

Step 2



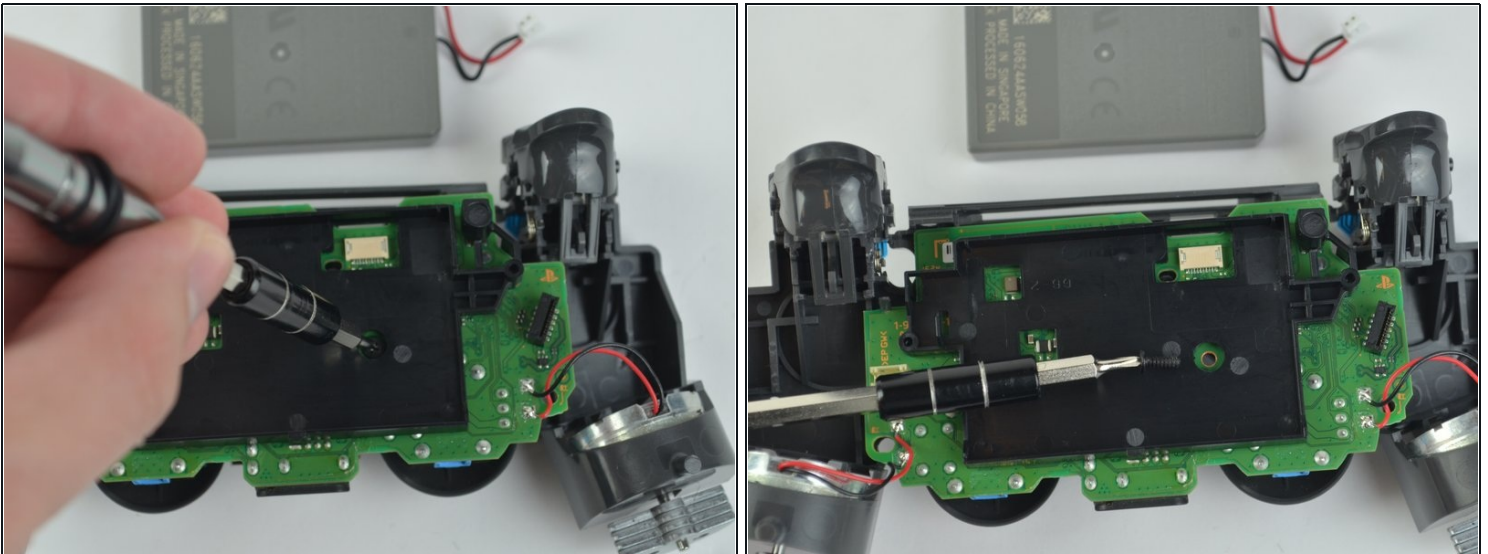
- Pull the ribbon cable out of the motherboard port to fully separate the two halves, using a pair of tweezers.

Step 3 — Battery



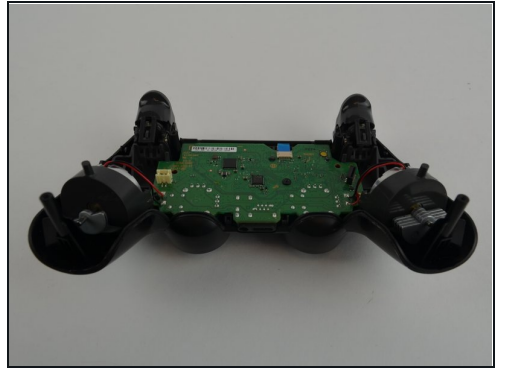
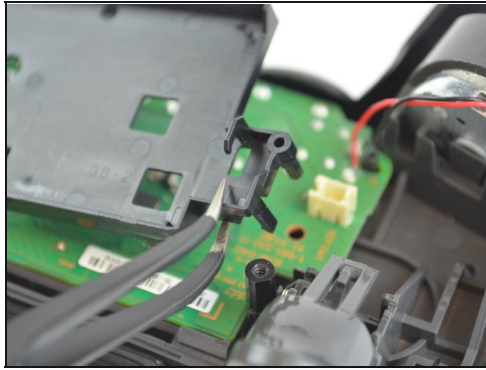
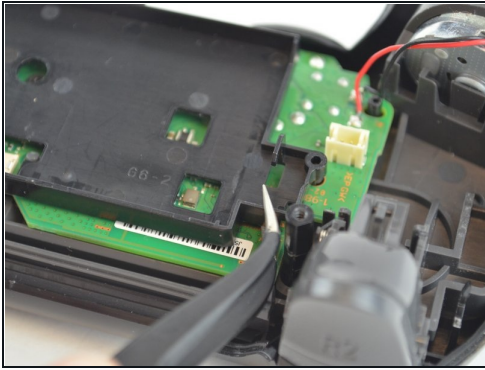
- Unplug the black and red wires from the power port located on the motherboard.
- Remove the old battery from the controller.

Step 4



- Remove the 6.43mm screw connecting the motherboard to the inner workings of the controller, using a Phillips-Head screwdriver.

Step 5



- Unhook the battery case from the motherboard, and pull it off.

To reassemble your device, follow these instructions in reverse order.